

2H+K 56,5m<sup>2</sup>  
2. - 3. kerros  
Porras A  
AS 4, 8

OH

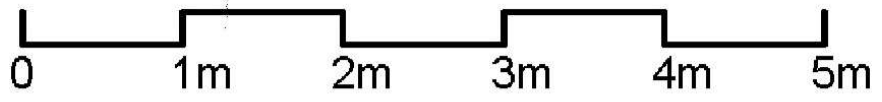
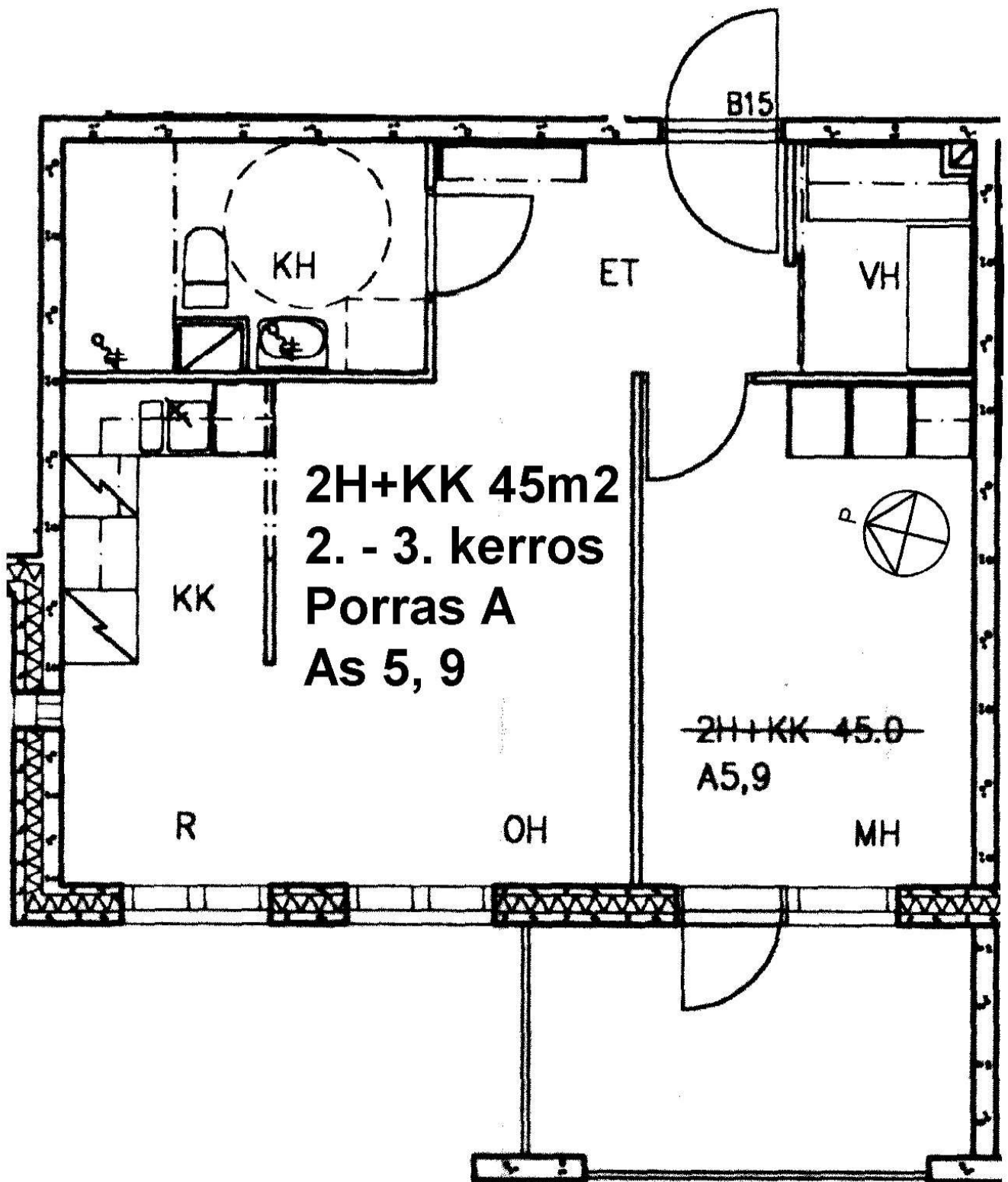
MH

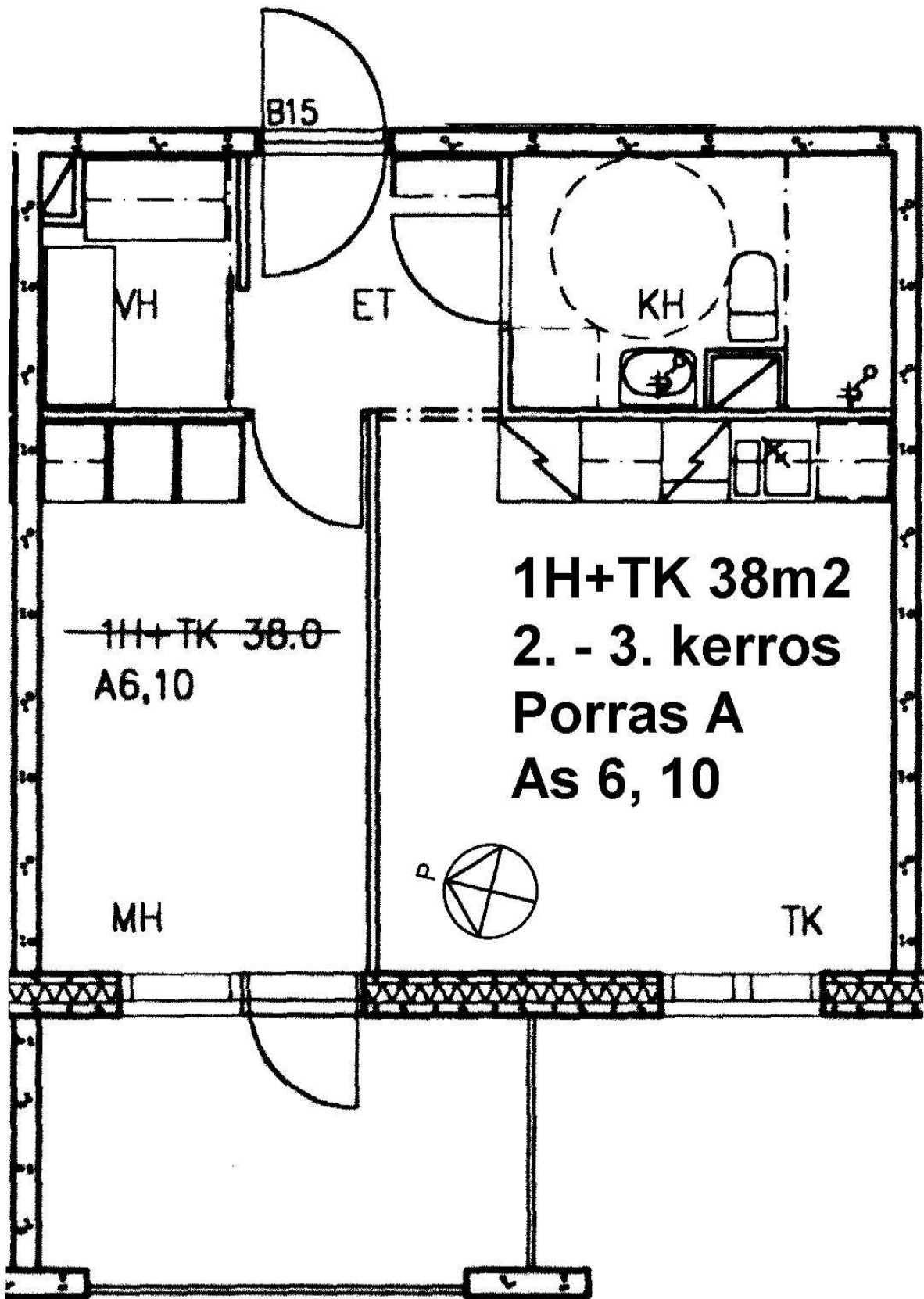
K

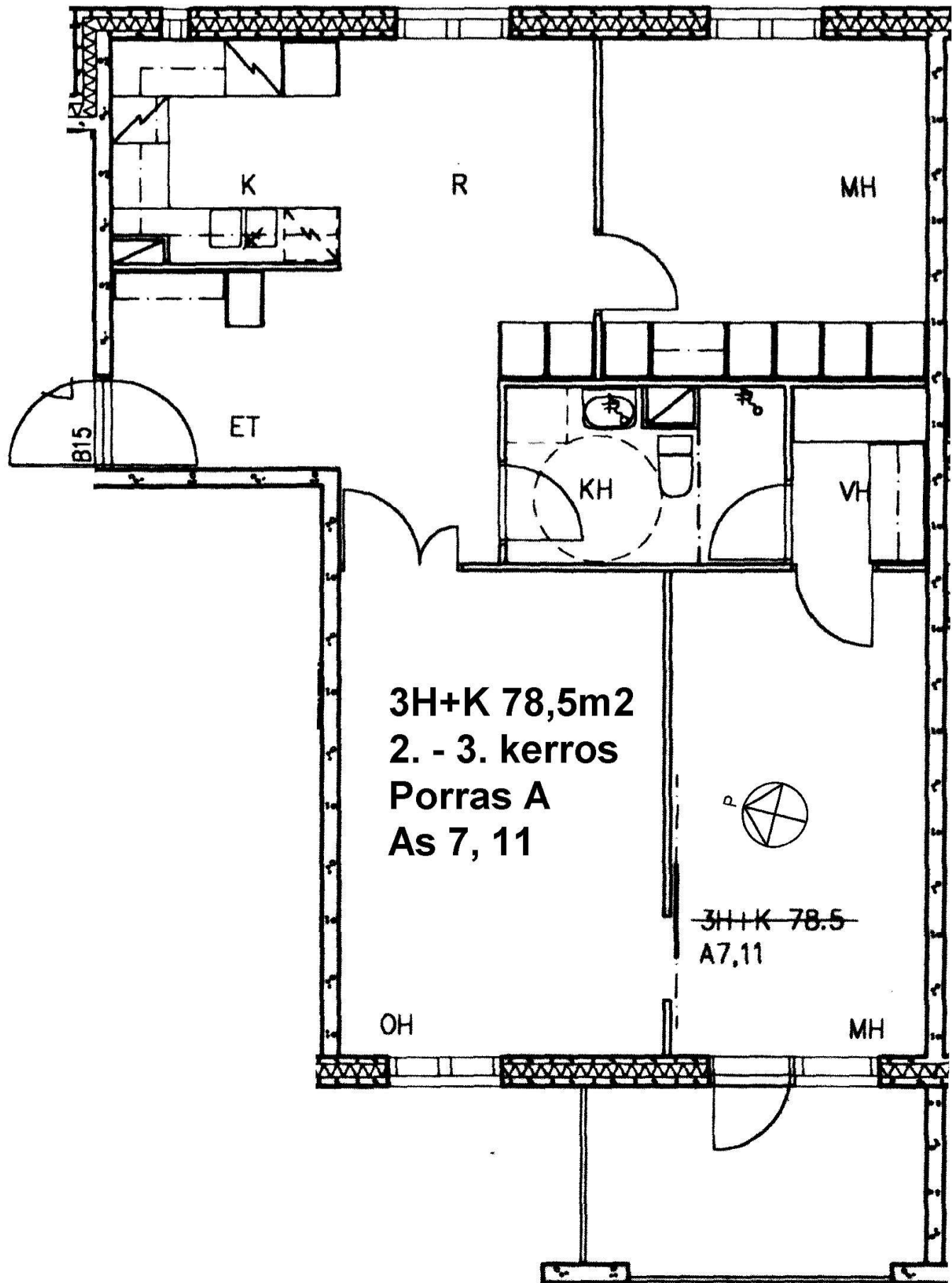
KH

ET

B15

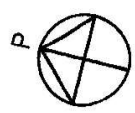






**3H+K 78,5m<sup>2</sup>**  
**2. - 3. kerros**  
**Porras A**  
**As 7, 11**

~~3H+K 78.5~~  
A7,11



OH

MH

B15

ET

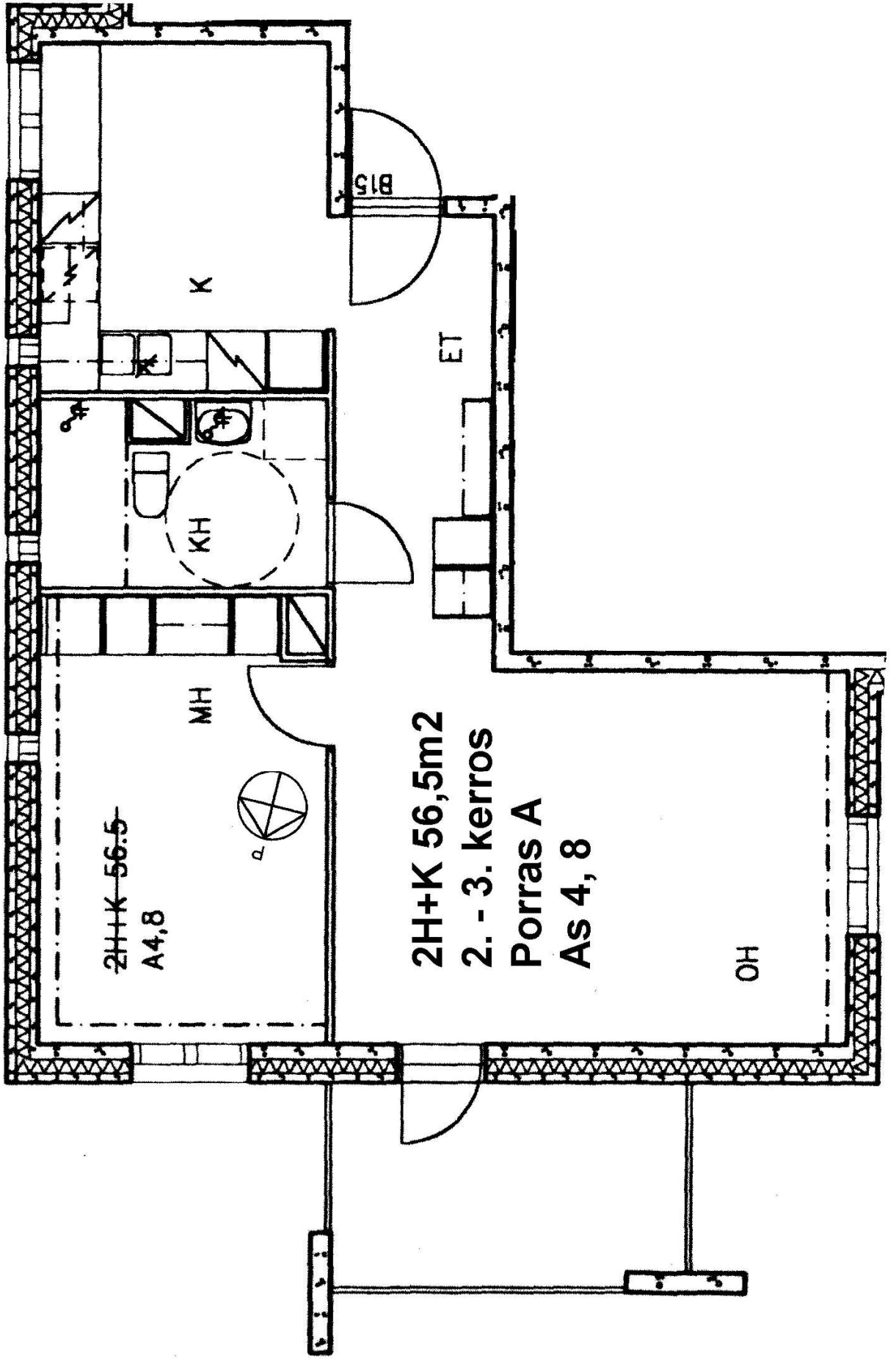
K

R

MH

KH

VH



2H+K 56,5  
A4,8

MH

K

KH

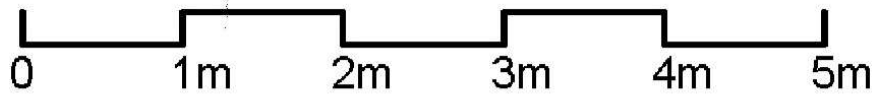
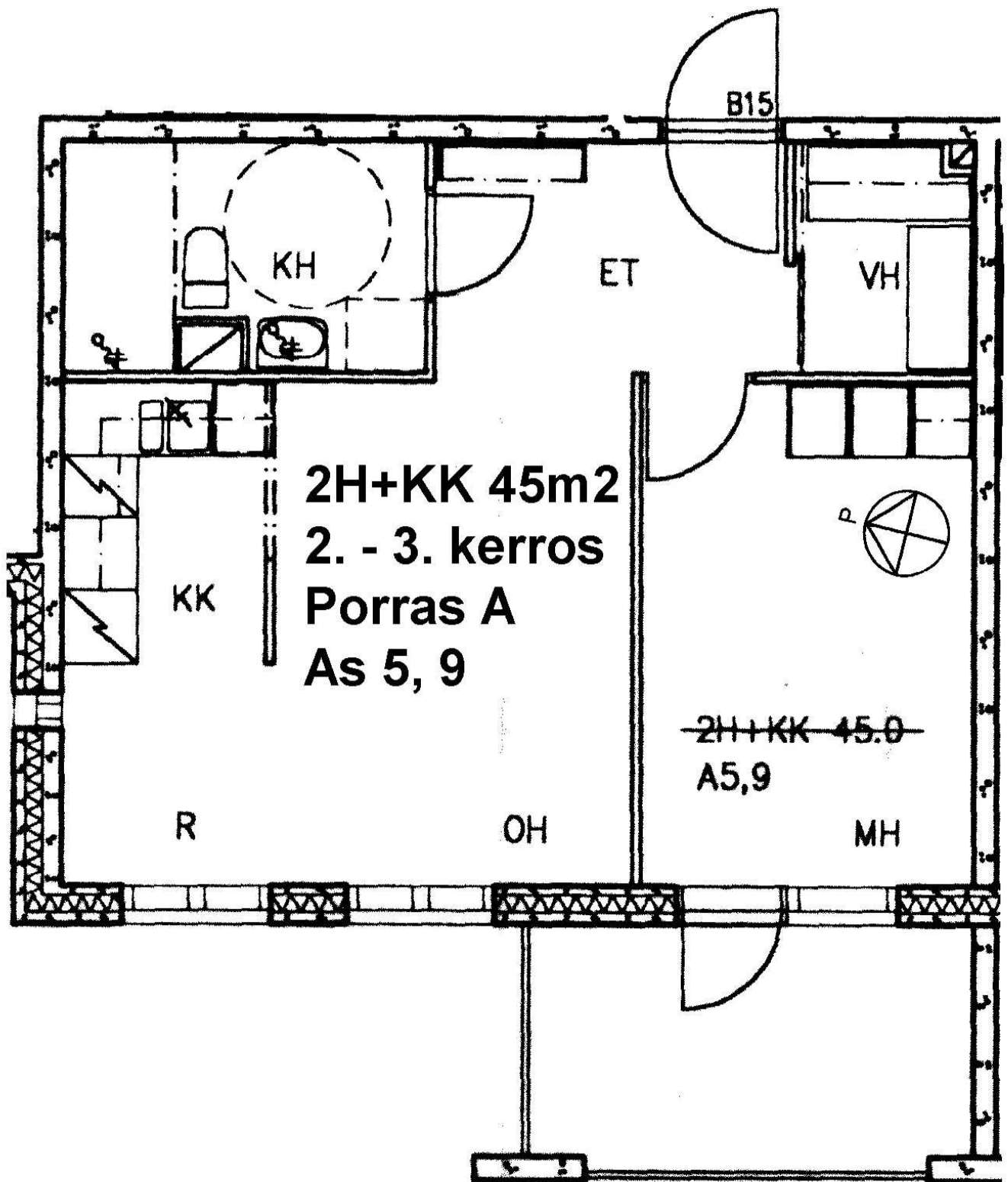
2H+K 56,5m<sup>2</sup>  
2. - 3. kerros  
Porras A  
AS 4, 8

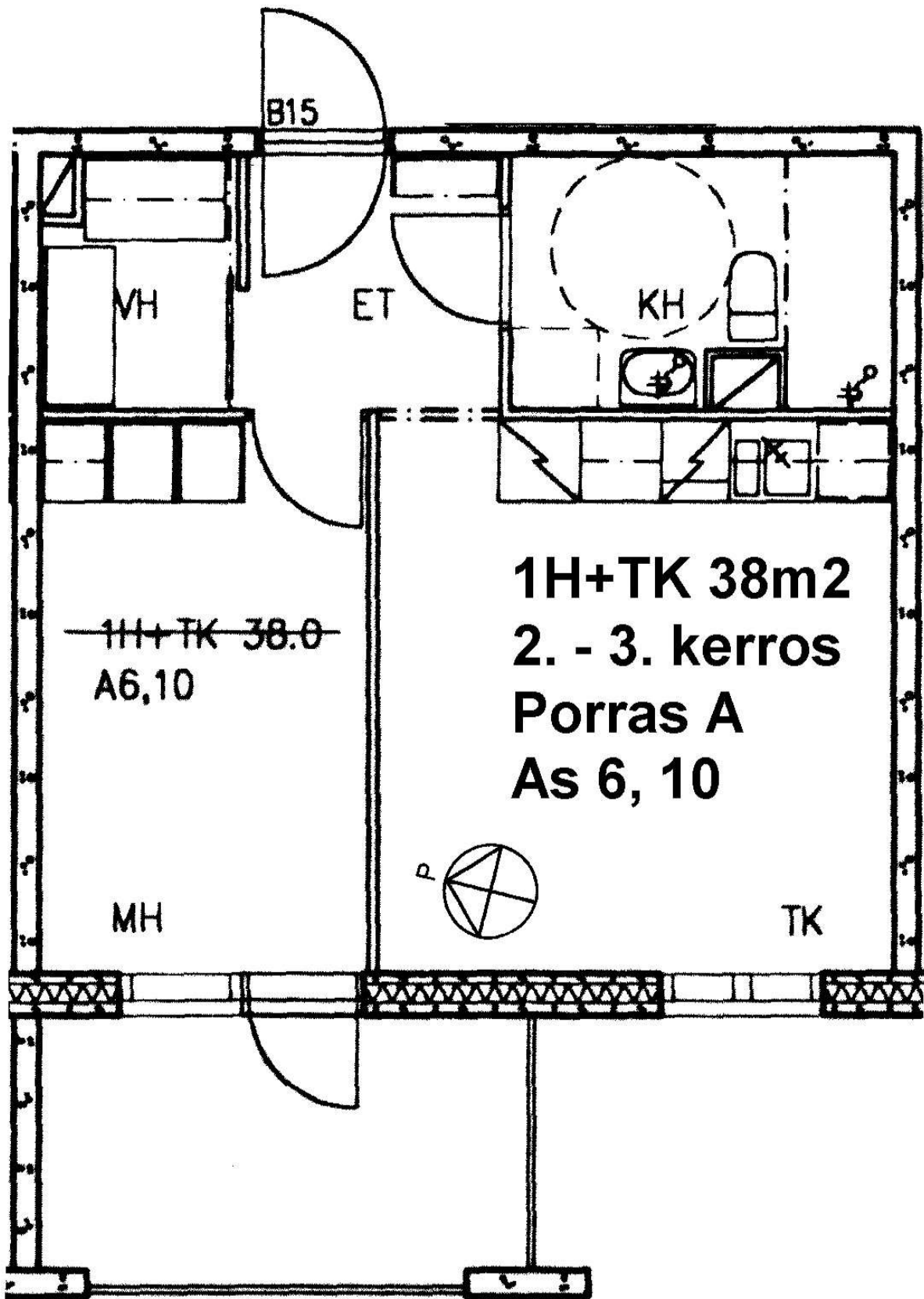
OH

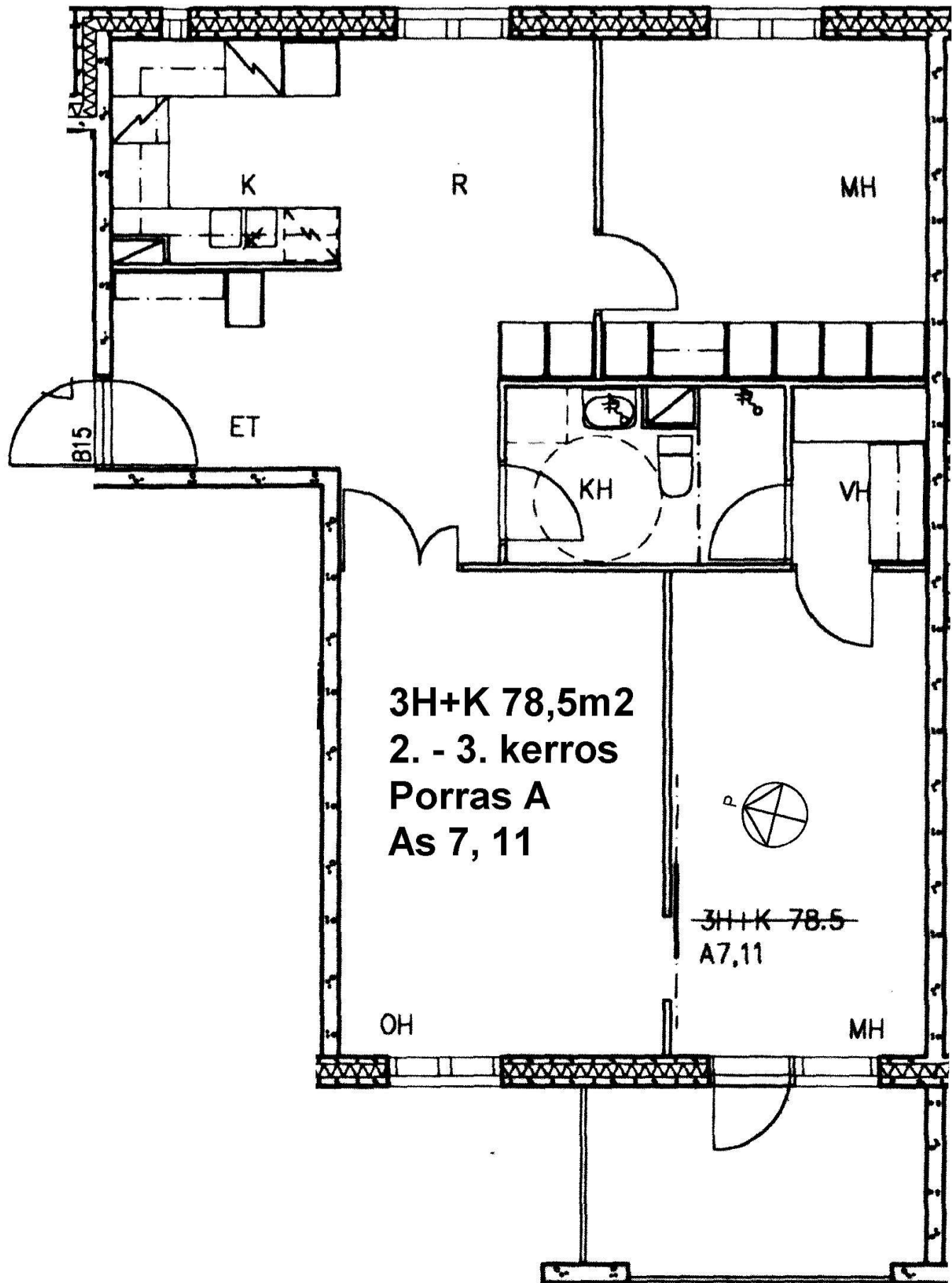
ET

B15

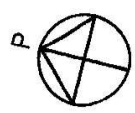








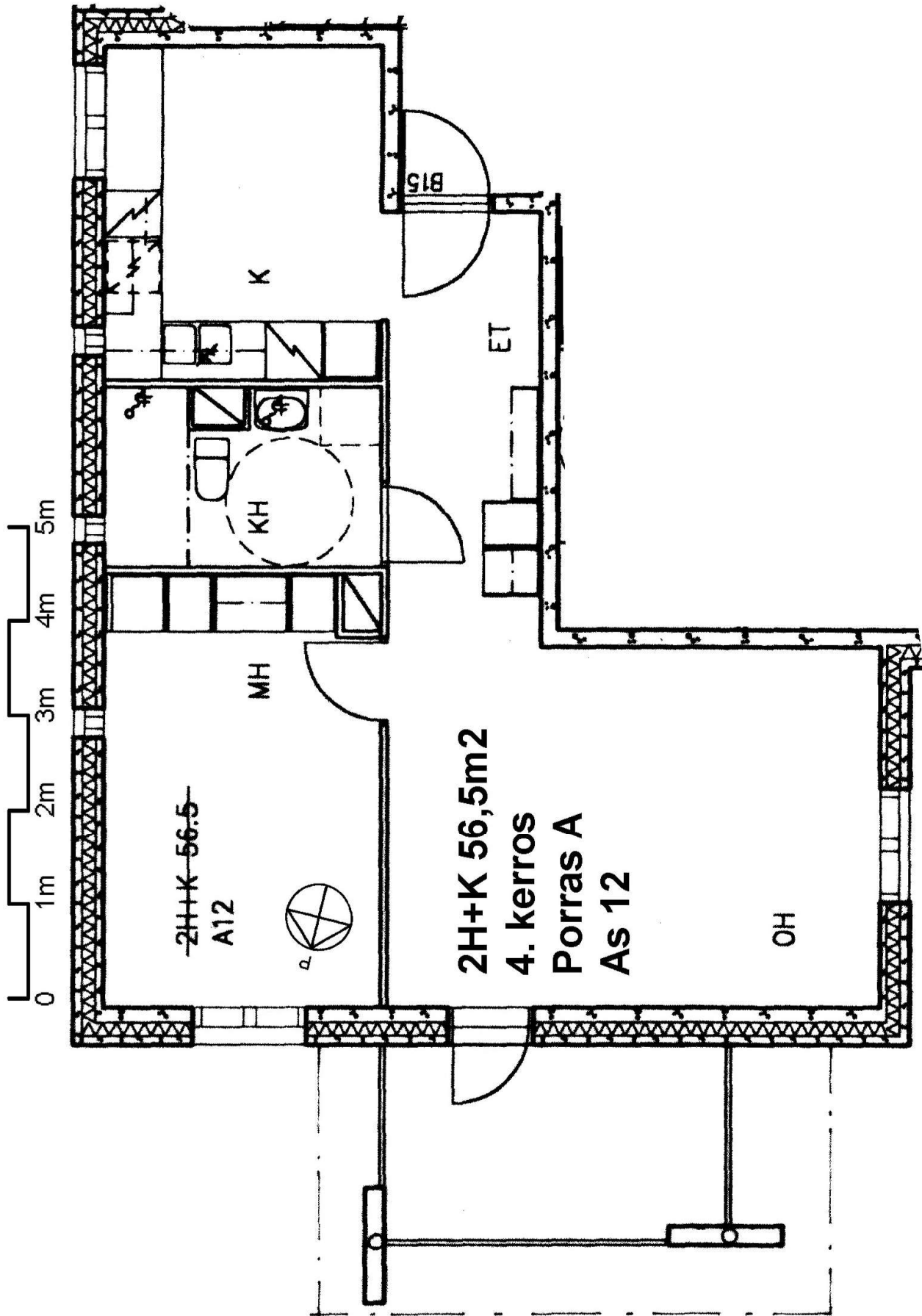
**3H+K 78,5m<sup>2</sup>**  
**2. - 3. kerros**  
**Porras A**  
**As 7, 11**



~~3H+K 78.5~~  
A7,11

OH

MH



~~2H+K 56.5~~  
A12

2H+K 56,5m2  
4. kerros  
Porras A  
As 12

OH

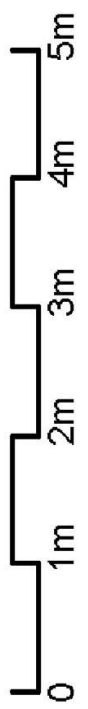
MH

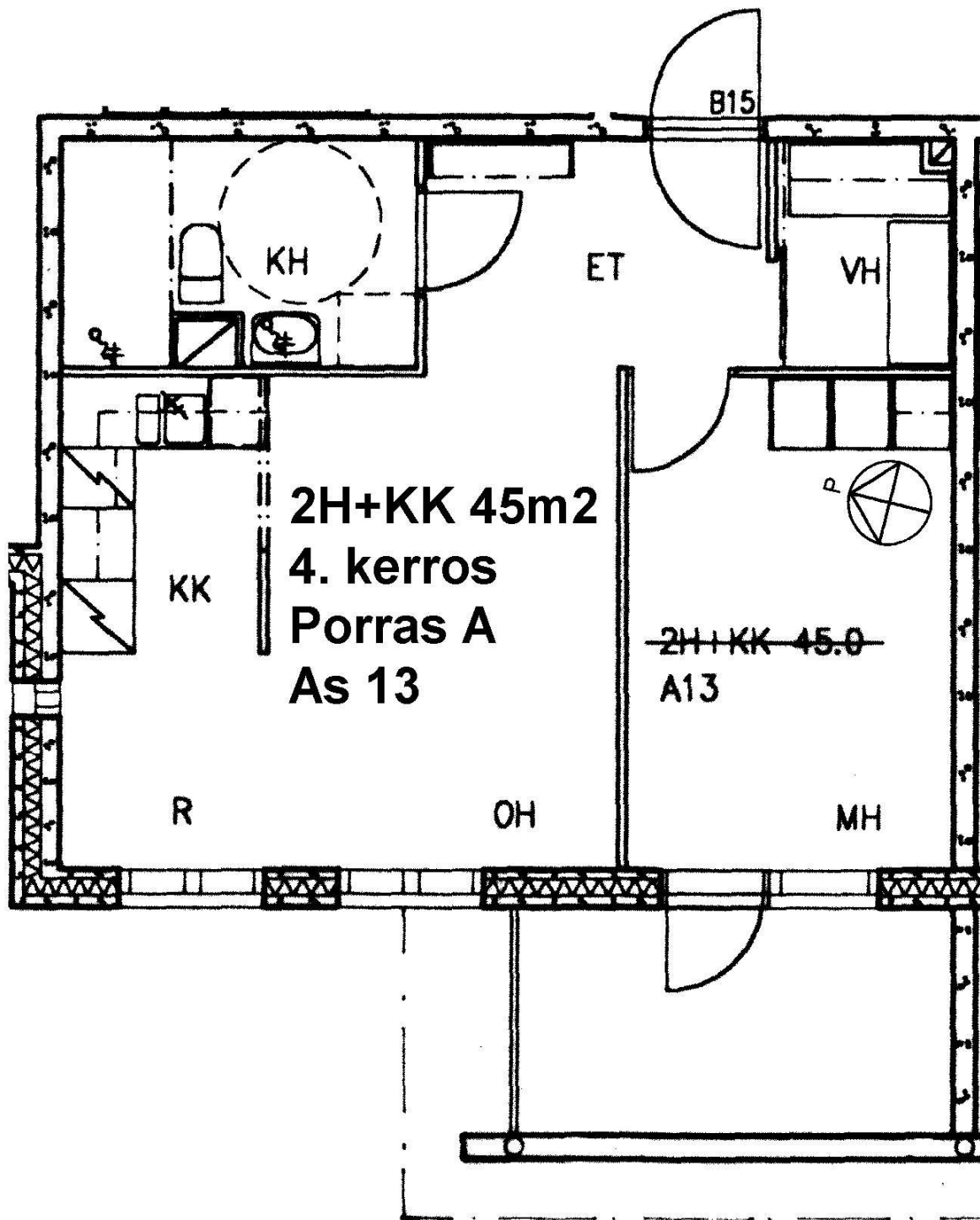
K

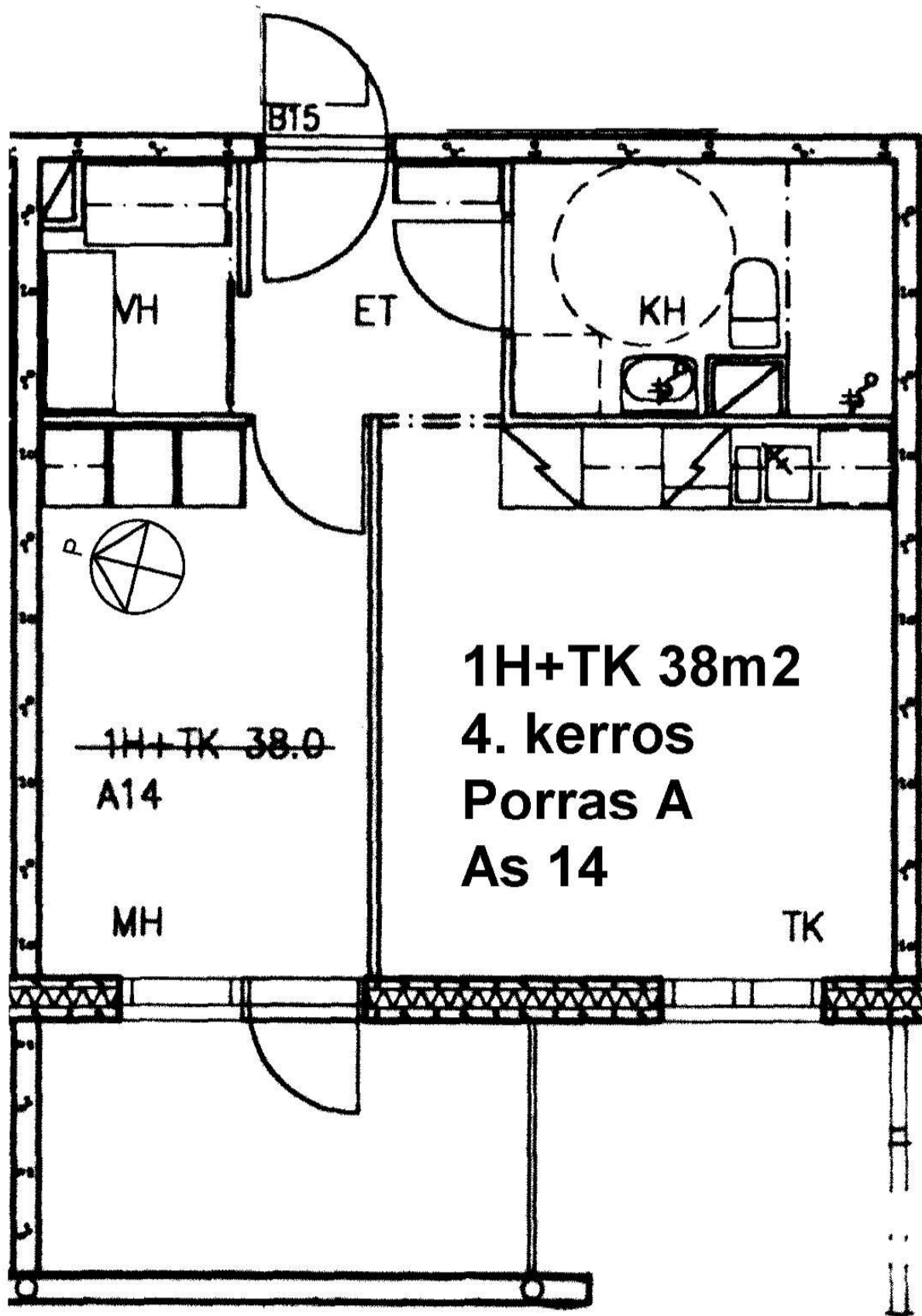
KH

ET

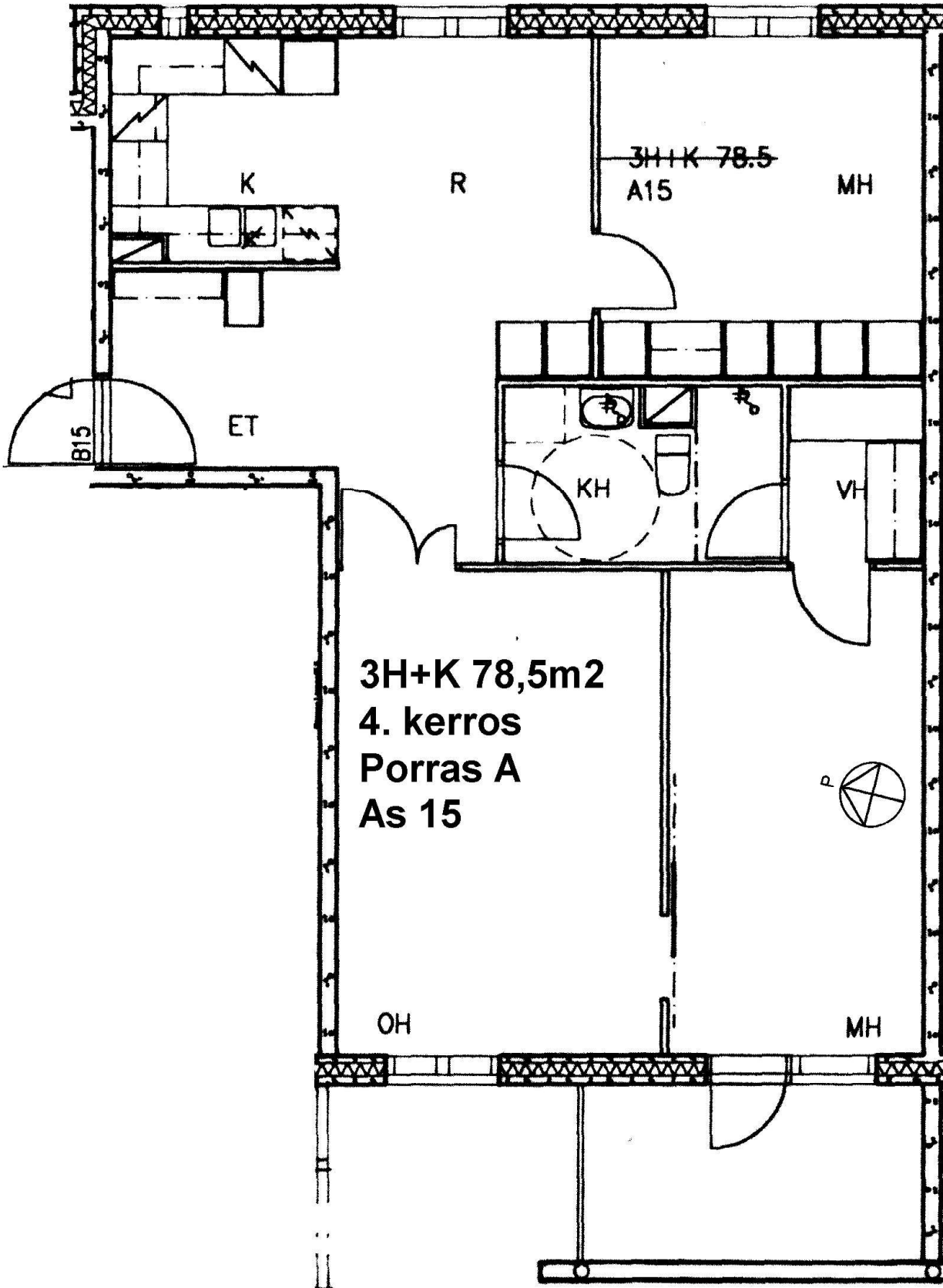
B15







0 1m 2m 3m 4m 5m



**3H+K 78,5m<sup>2</sup>**  
**4. kerros**  
**Porras A**  
**As 15**

OH

MH

ET

B15

R

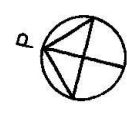
K

3H+K 78.5  
A15

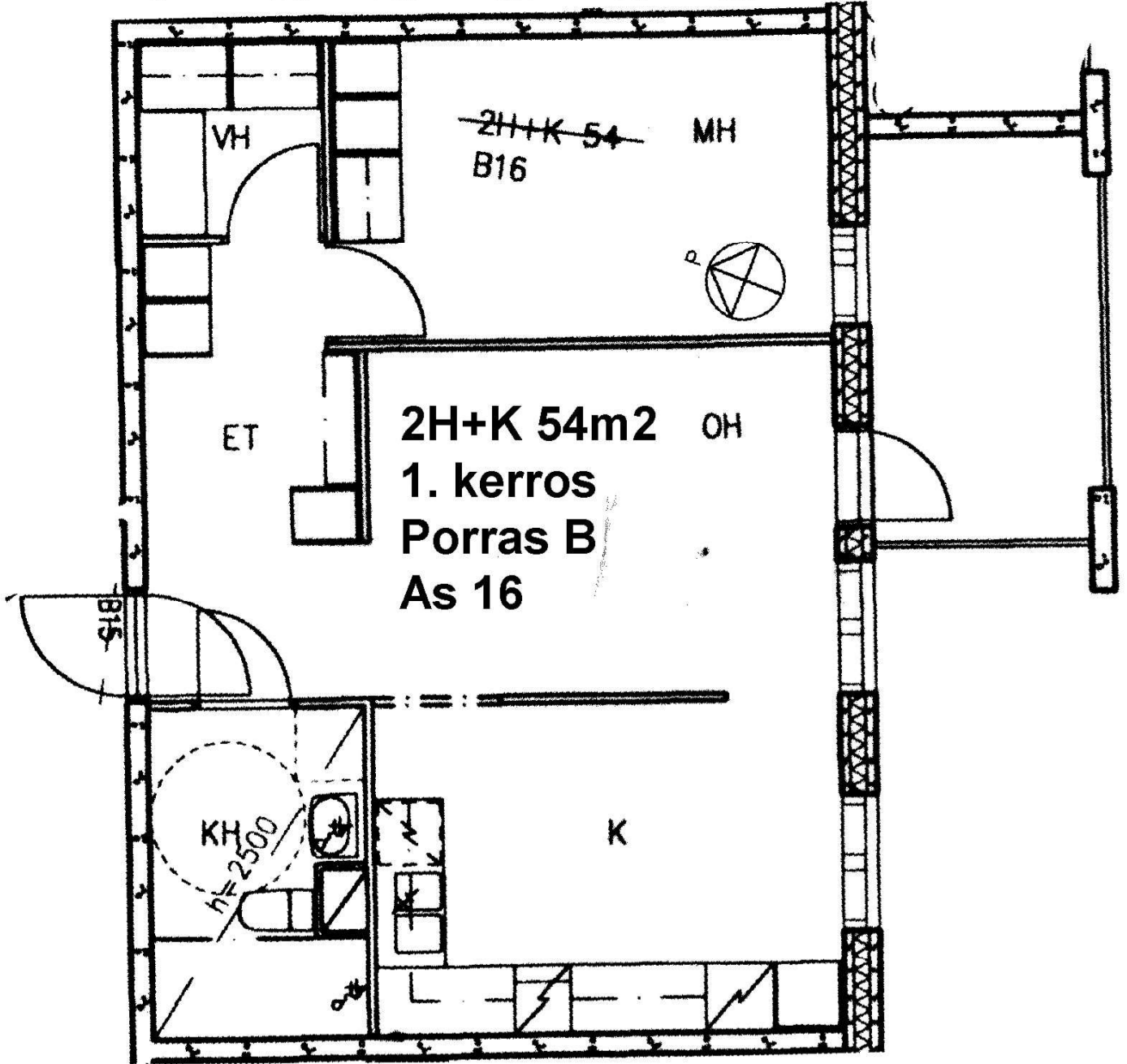
MH

KH

VH



0 1m 2m 3m 4m 5m



VH

~~2H+K 54~~  
B16

MH



ET

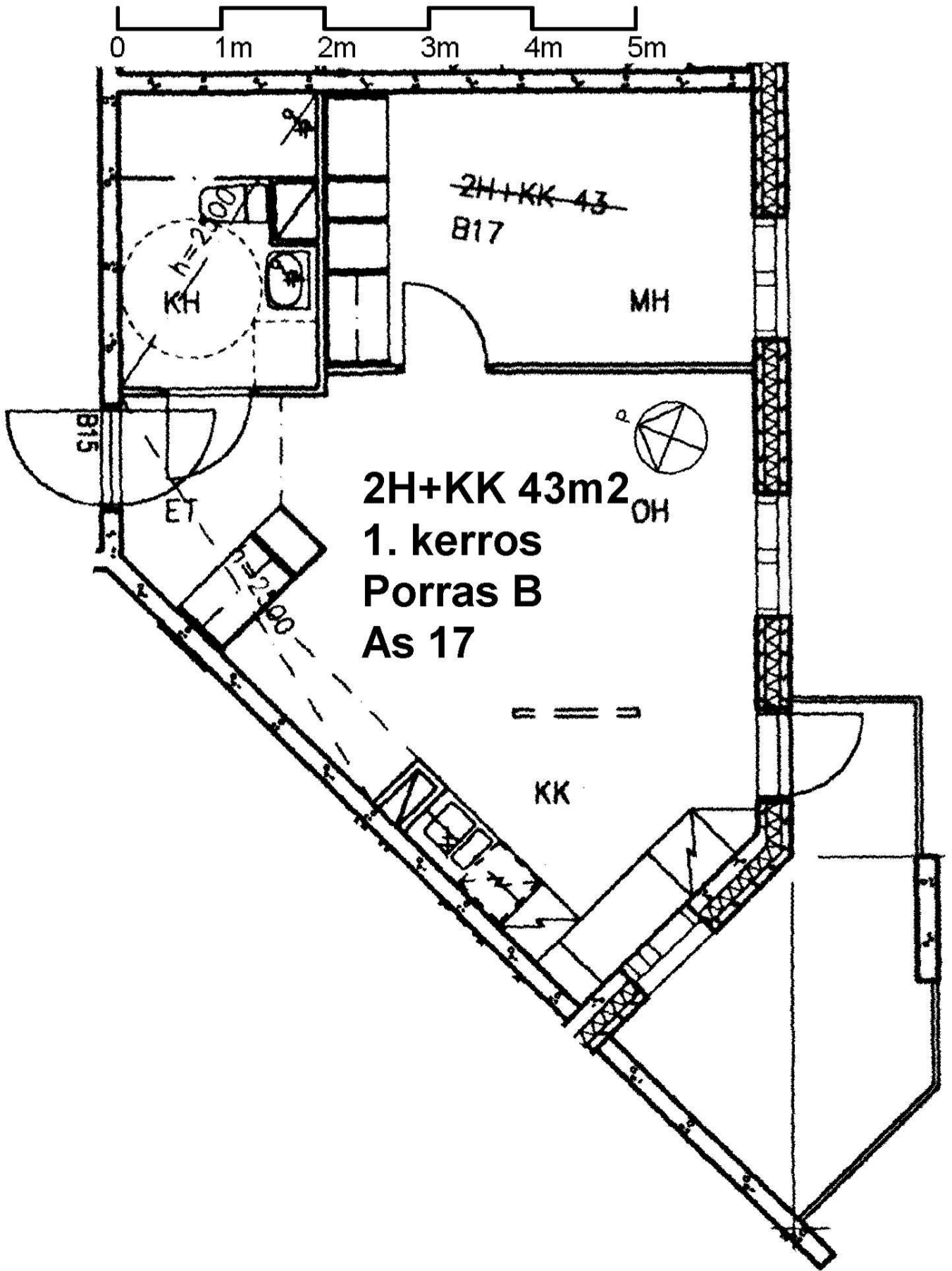
**2H+K 54m2** OH  
**1. kerros**  
**Porras B**  
**As 16**

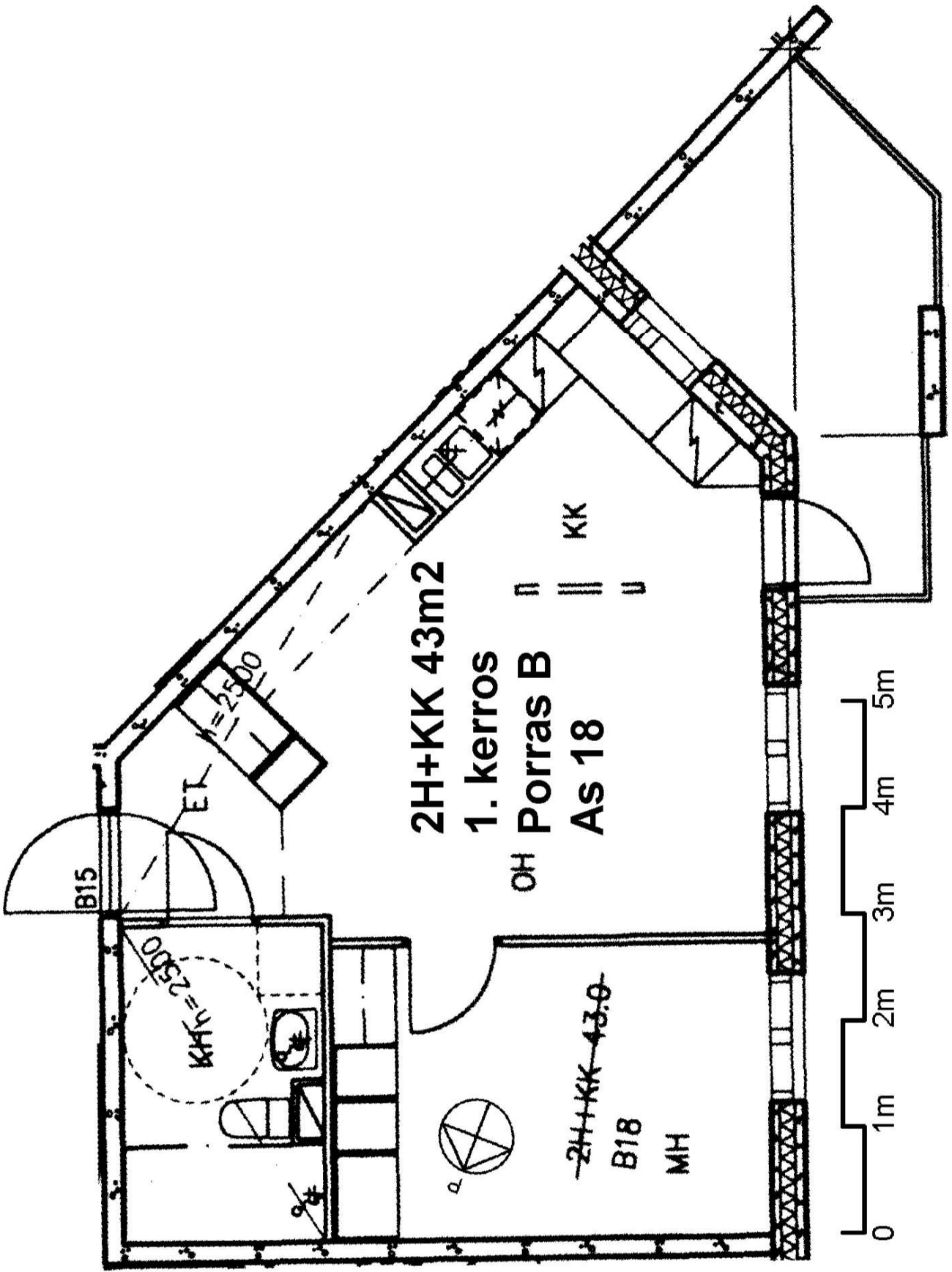
B15

KH  
h=2500

K







2H+KK 43m2

1. kerros

OH Porras B

AS 18

B15

ET

KAA n=2500

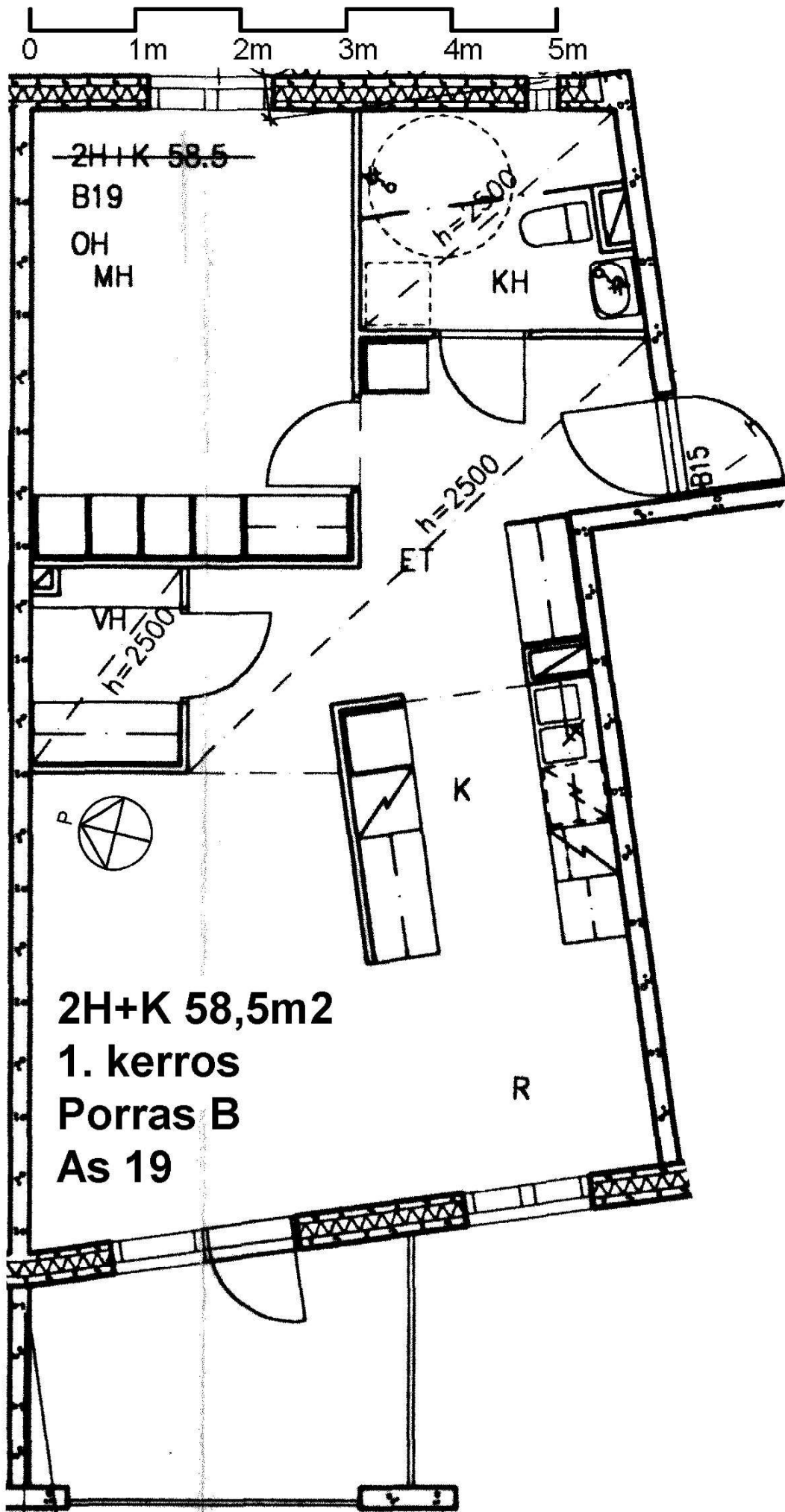
~~2H+KK 43.0~~

B18

MH

KK

0 1m 2m 3m 4m 5m



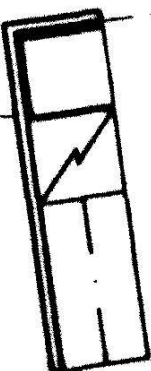
0 1m 2m 3m 4m 5m

2H+K 58.5  
B19  
OH  
MH

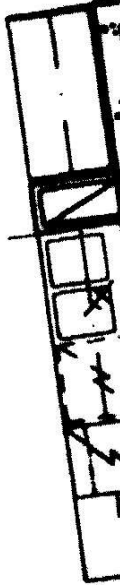
h=2500  
KH



VH  
h=2500



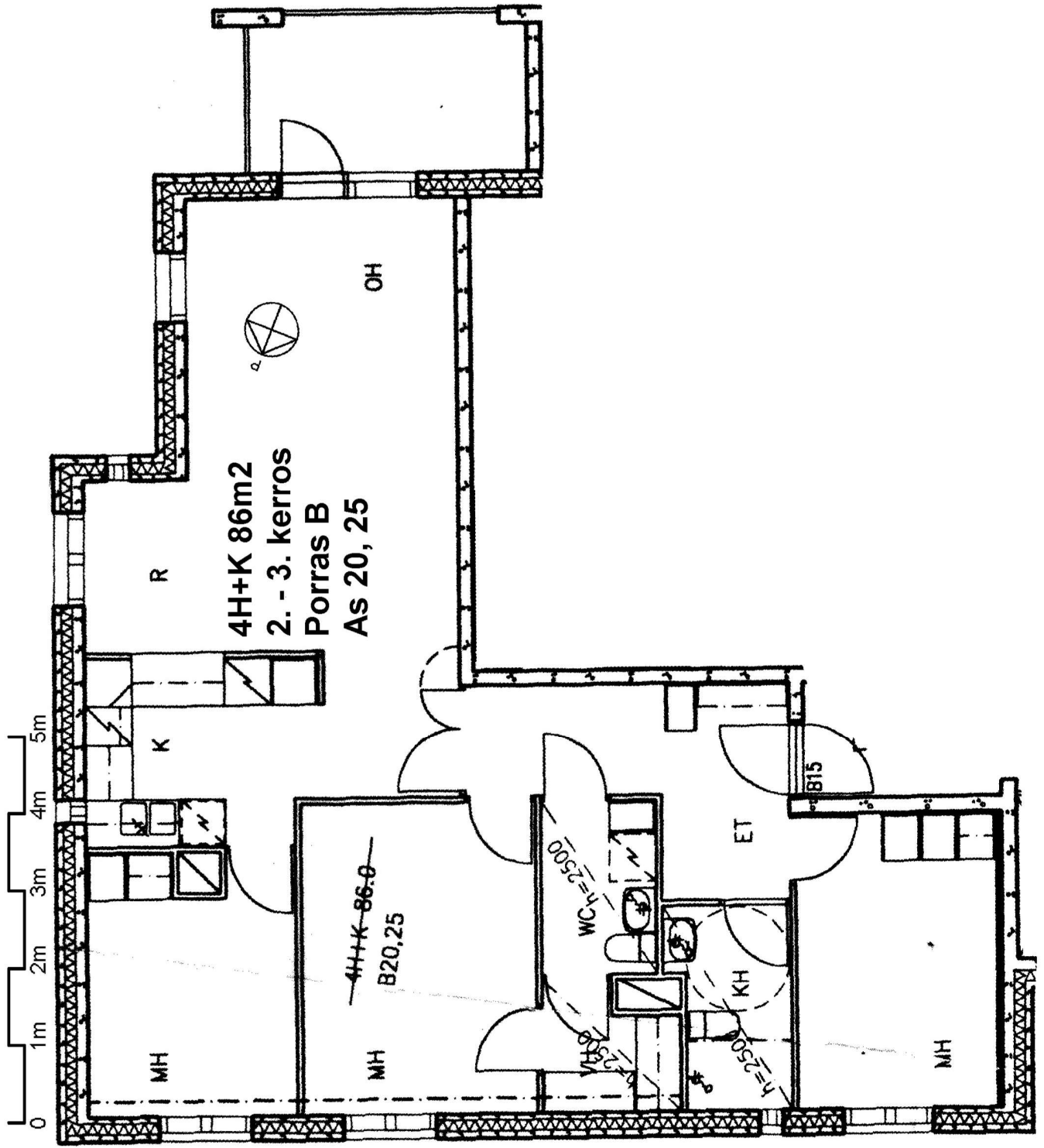
K

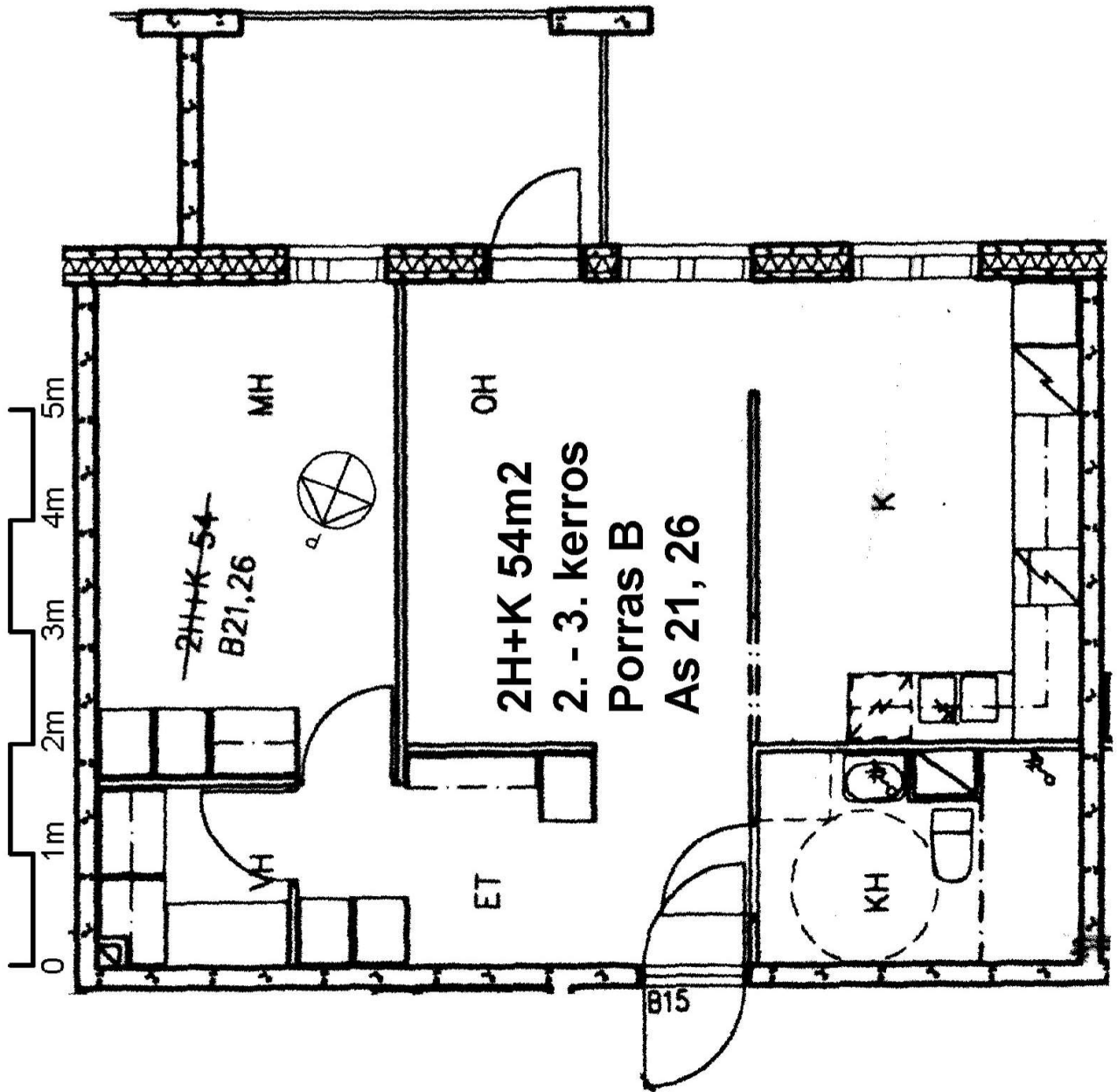


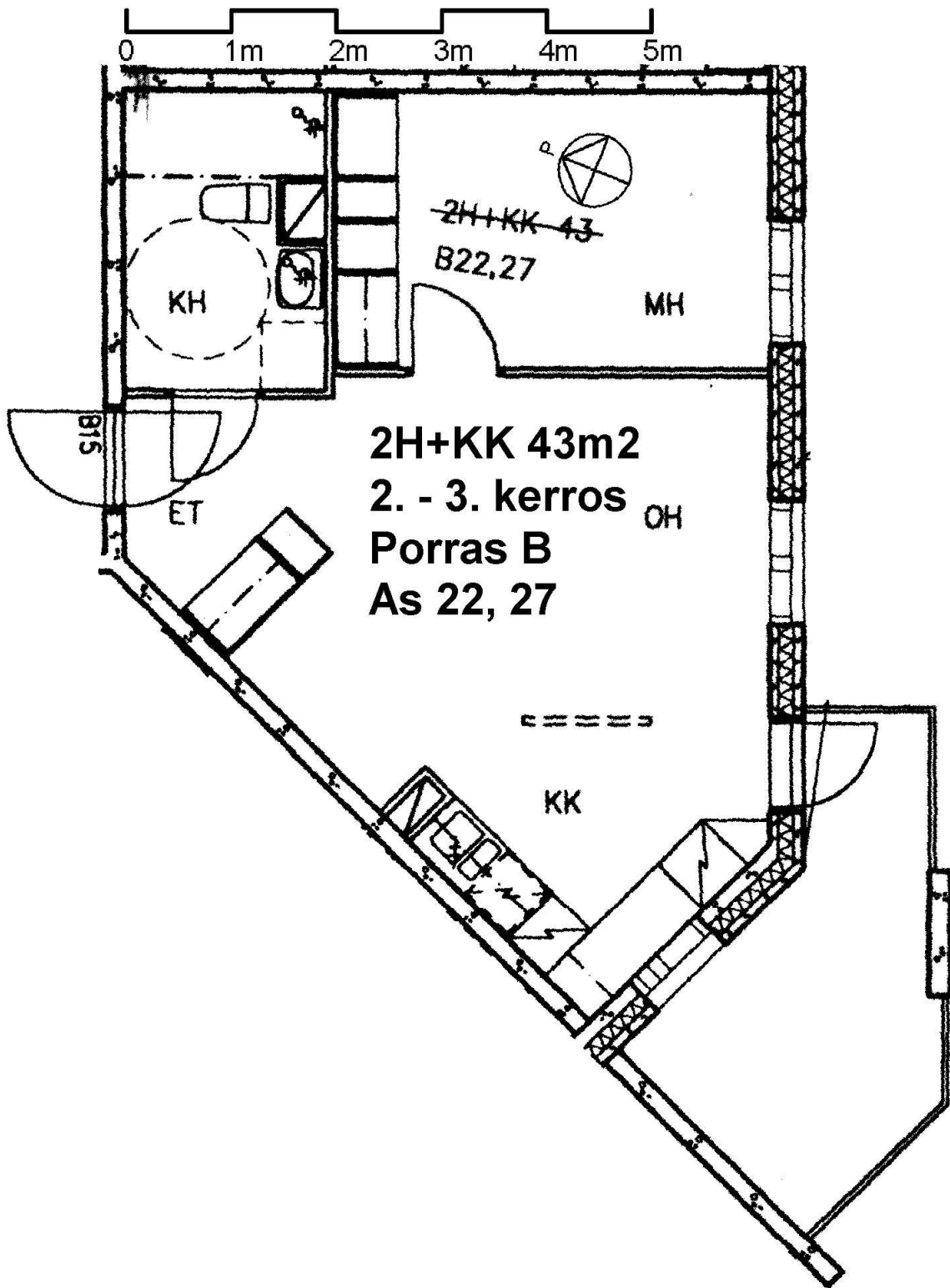
2H+K 58,5m2  
1. kerros  
Porras B  
As 19

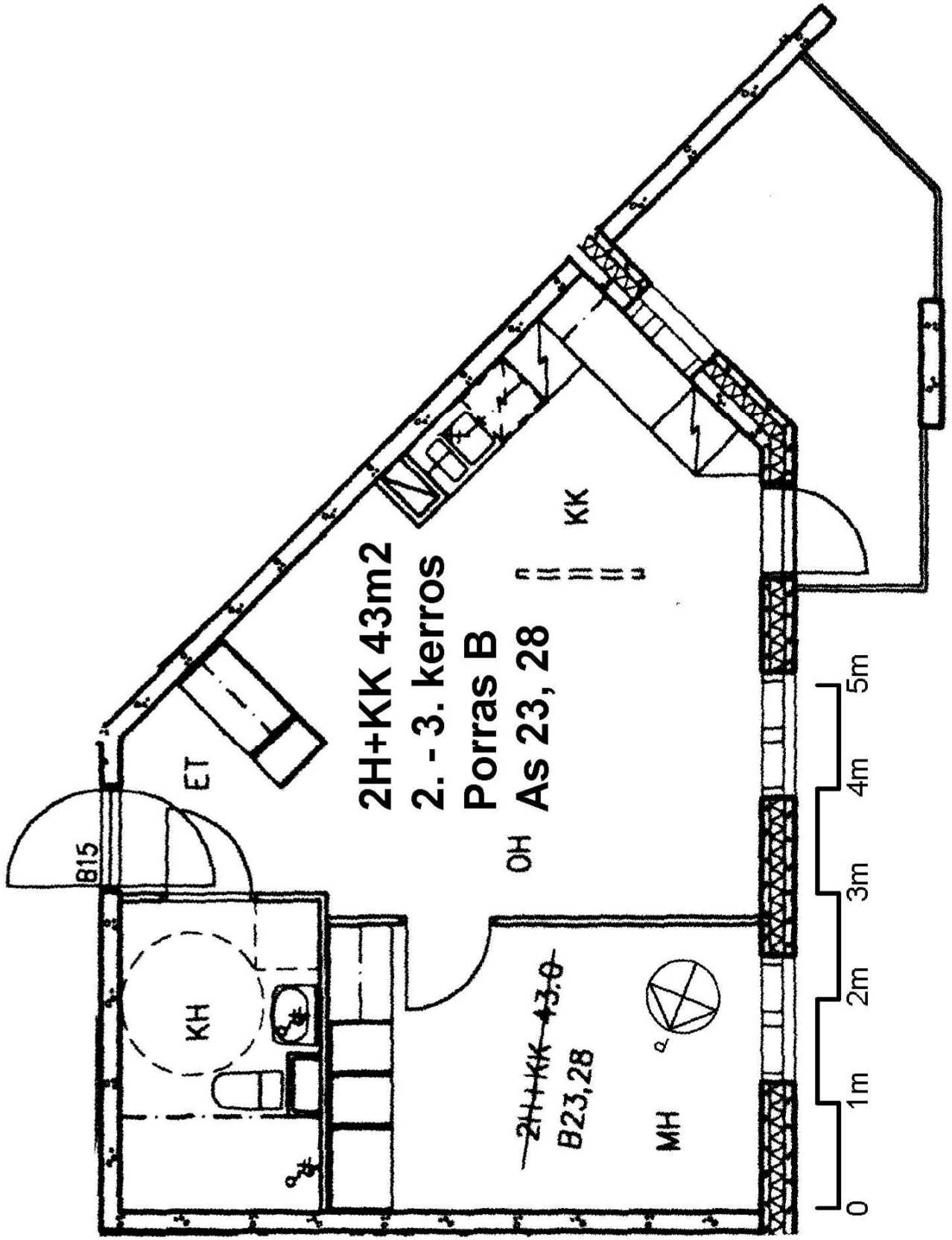
R

B15

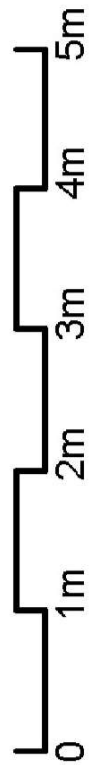








2H+KK 43m2  
 2. - 3. kerros  
 Porras B  
 As 23, 28



B15

KH

OH

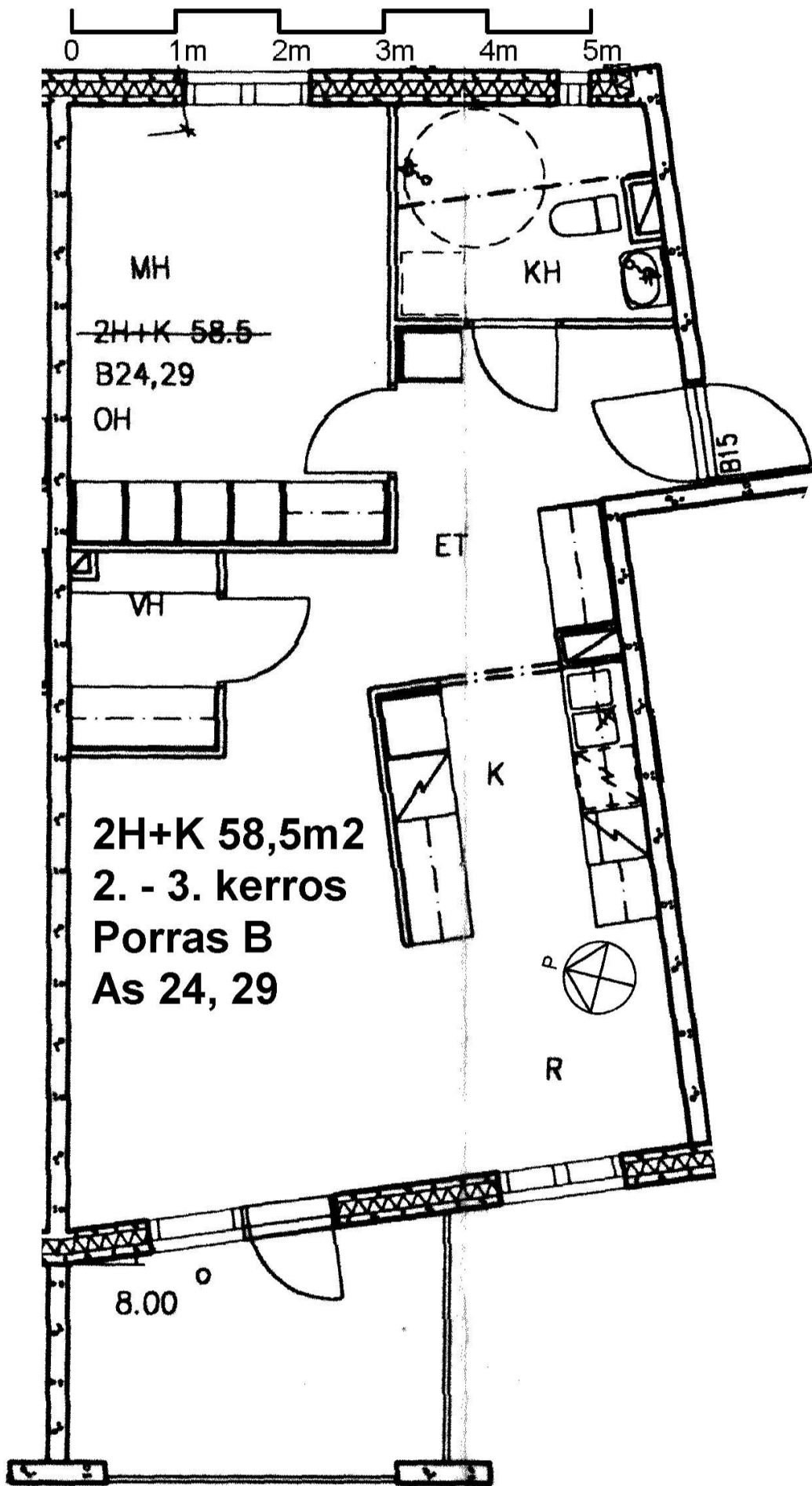
~~2H+KK 43.0~~  
 B23,28

MH

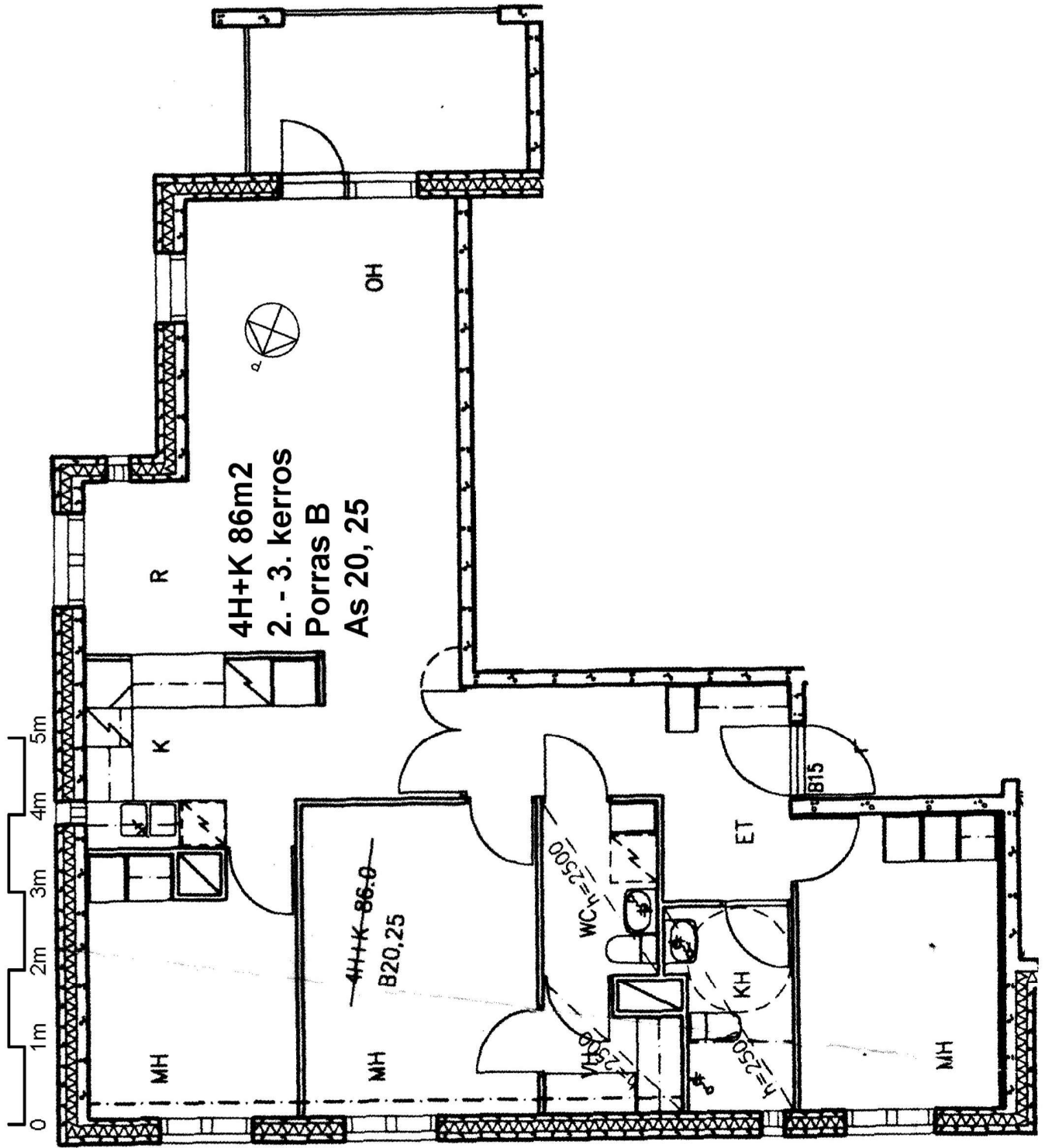


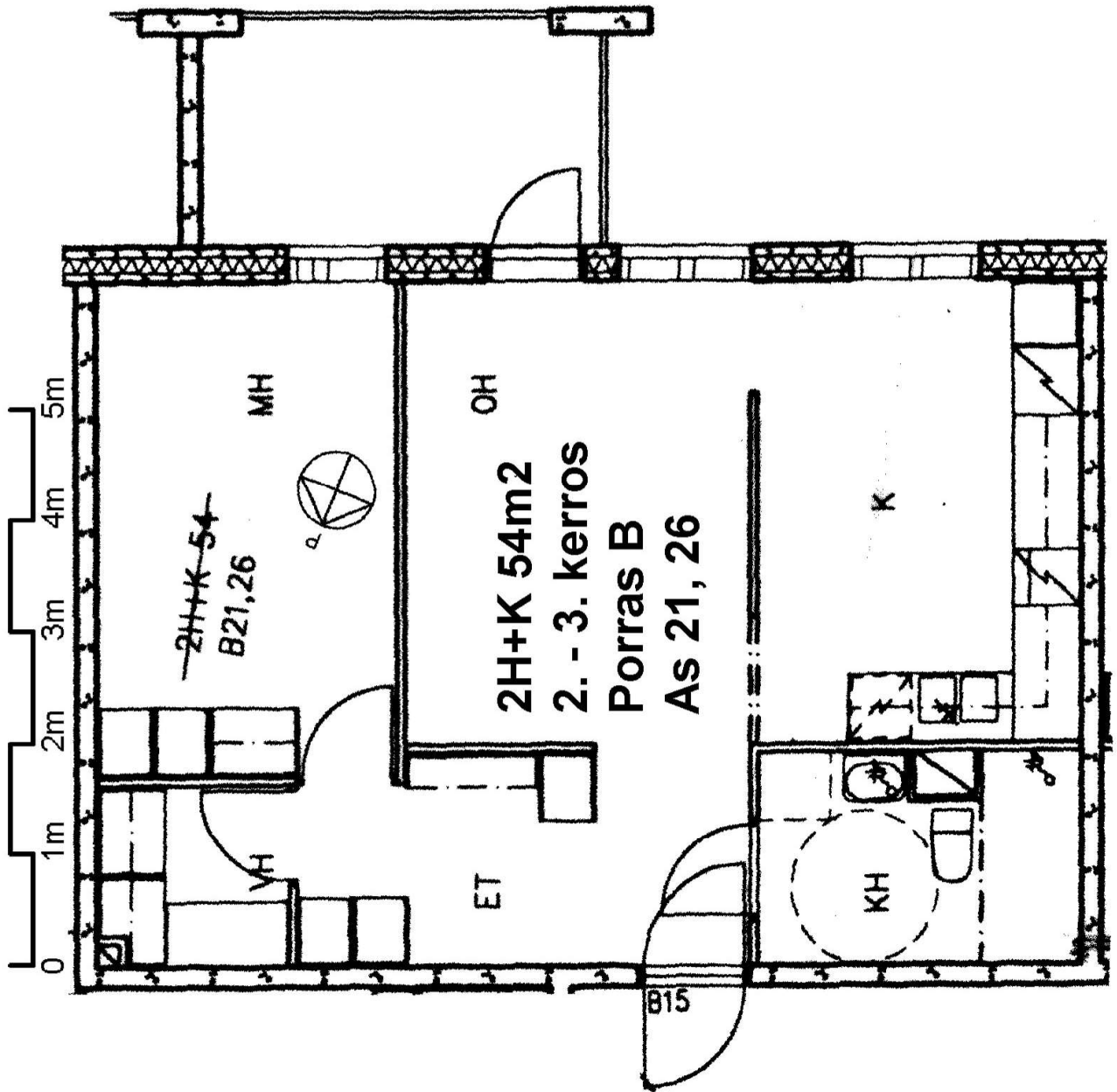
KK

ET









0 1m 2m 3m 4m 5m

~~2H+K 54~~  
B21,26

MH

OH

2H+K 54m2  
2. - 3. kerros  
Porras B  
AS 21, 26

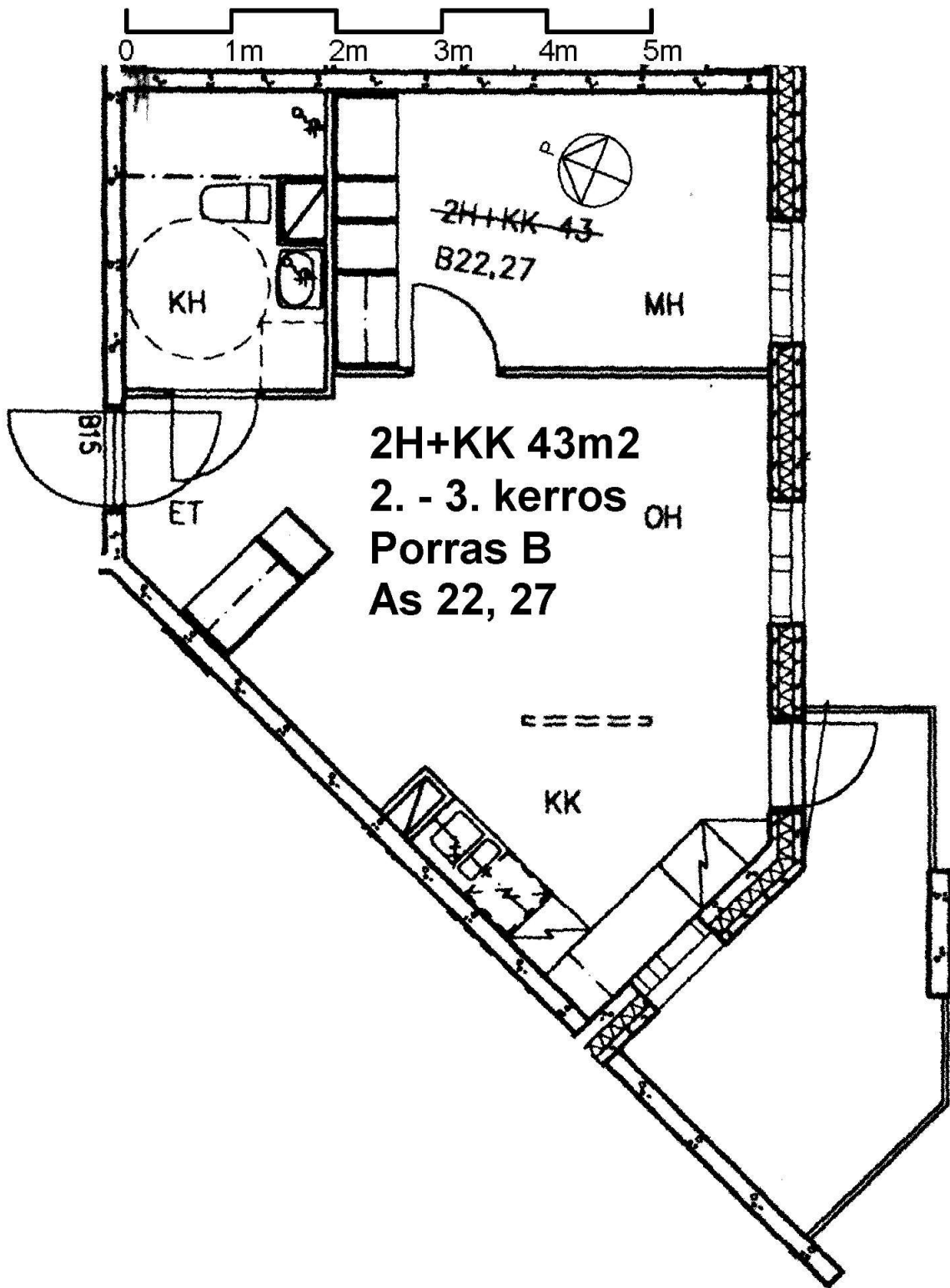
K

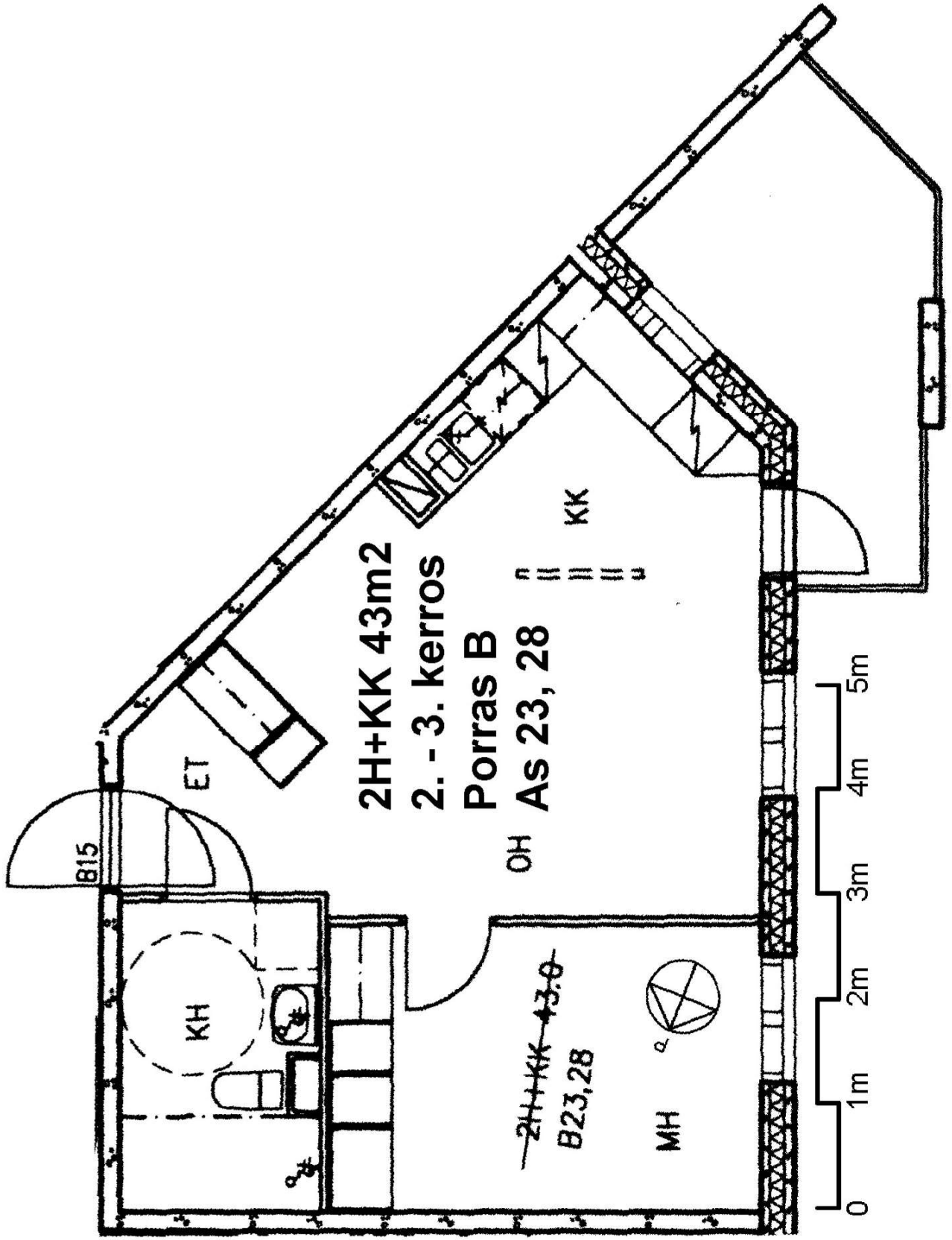
VH

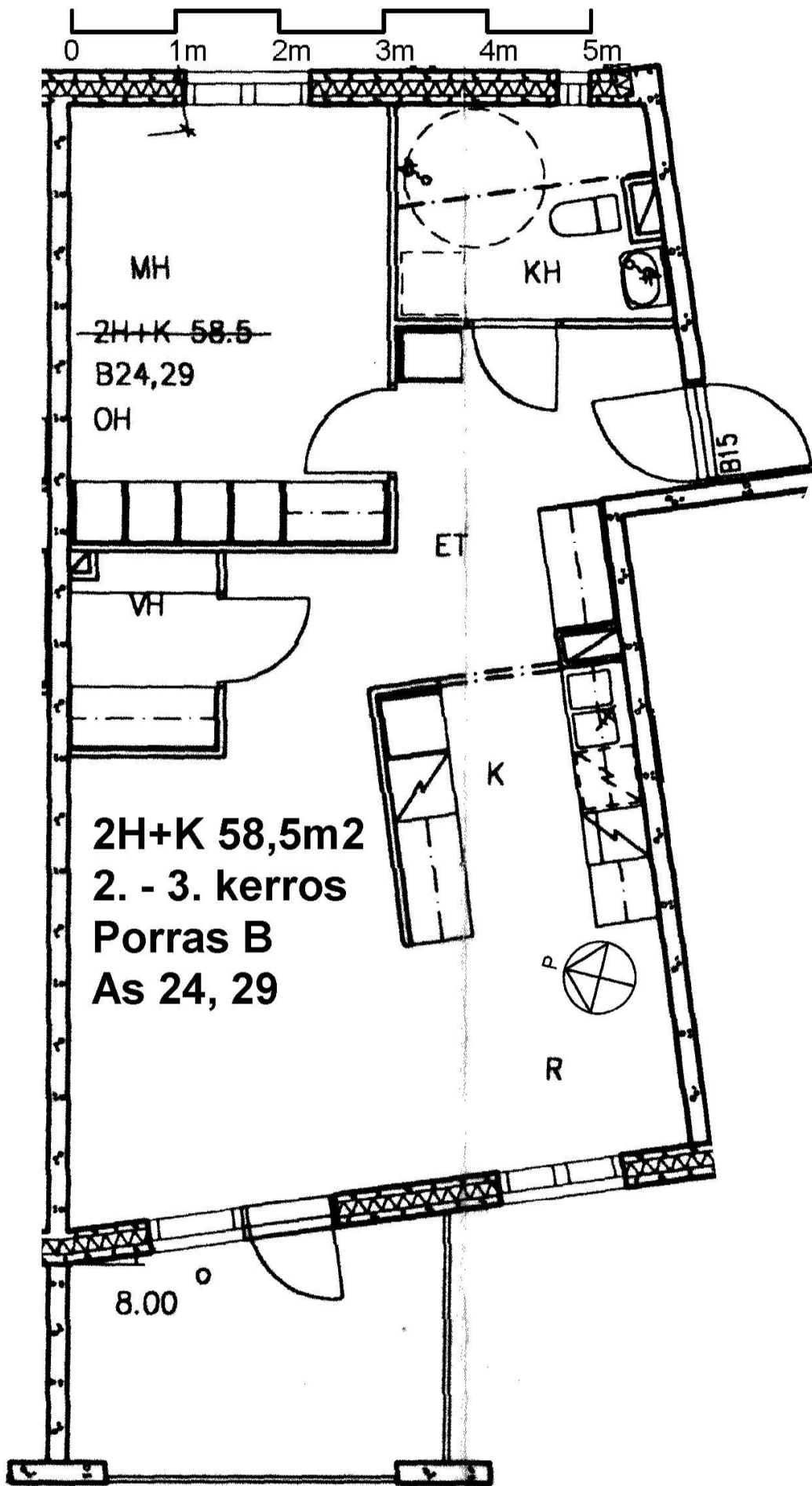
ET

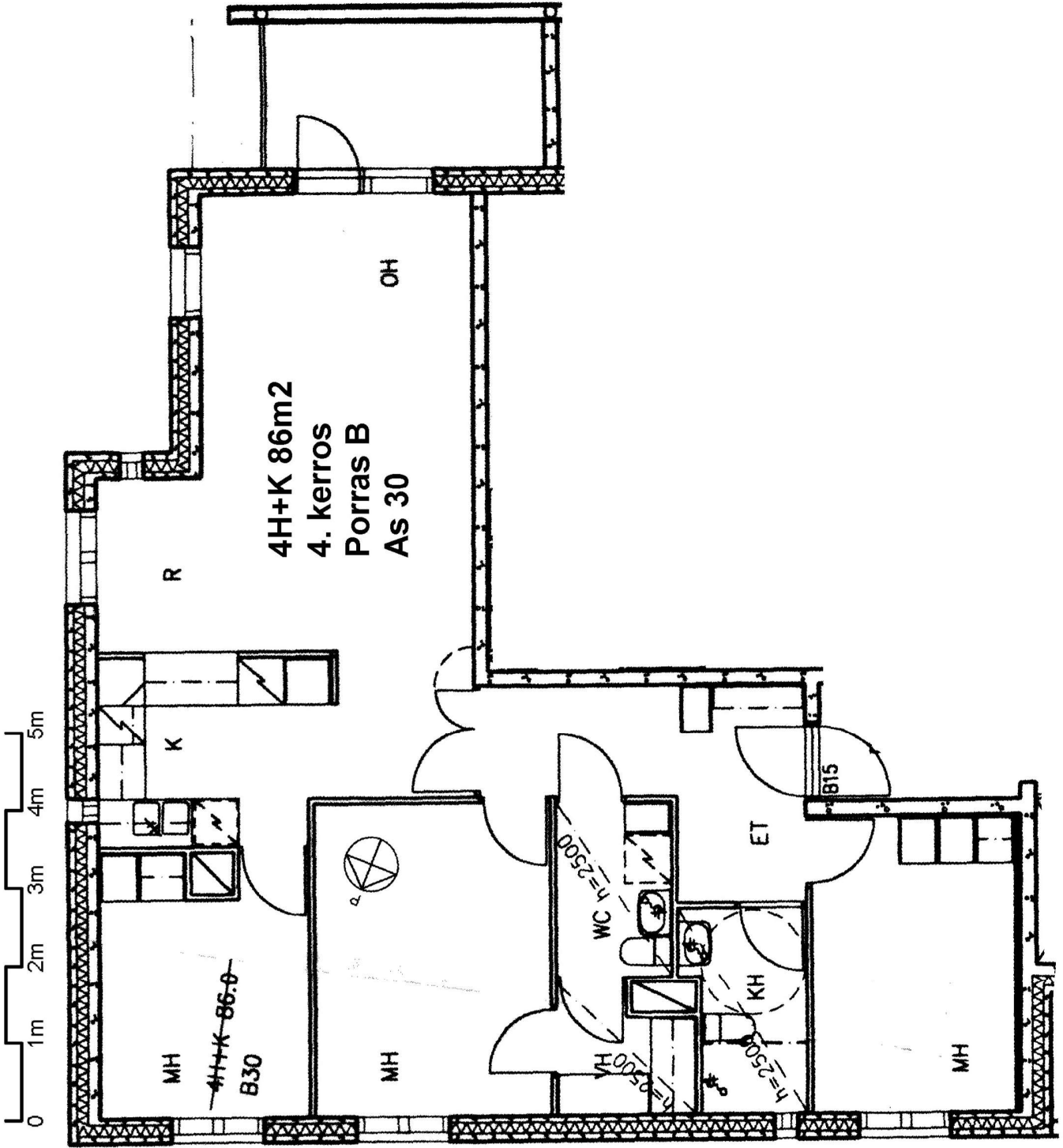
KH

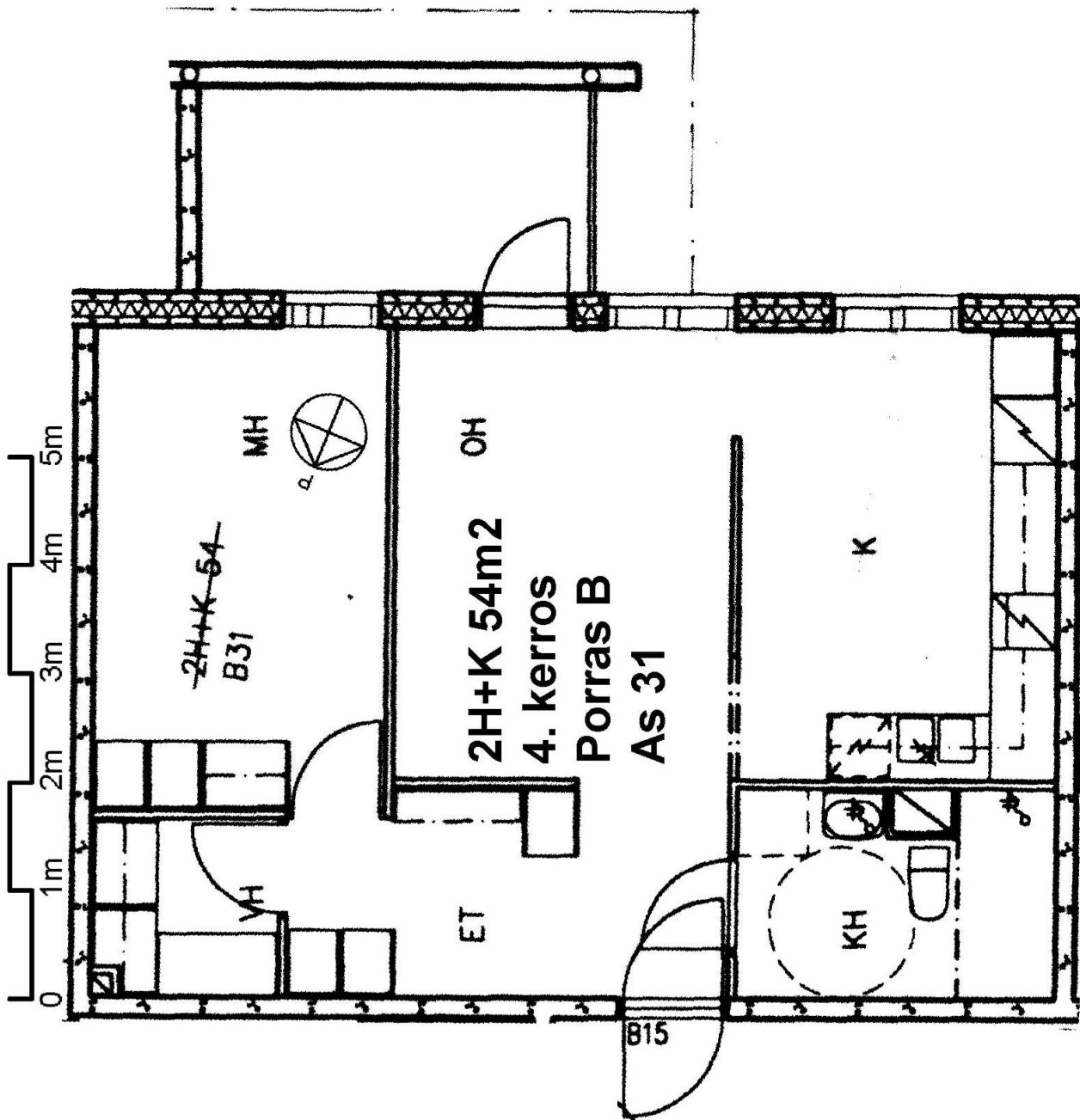
B15











~~2H+K 54~~  
B31

MH

OH  
2H+K 54m2  
4. kerros  
Porras B  
AS 31

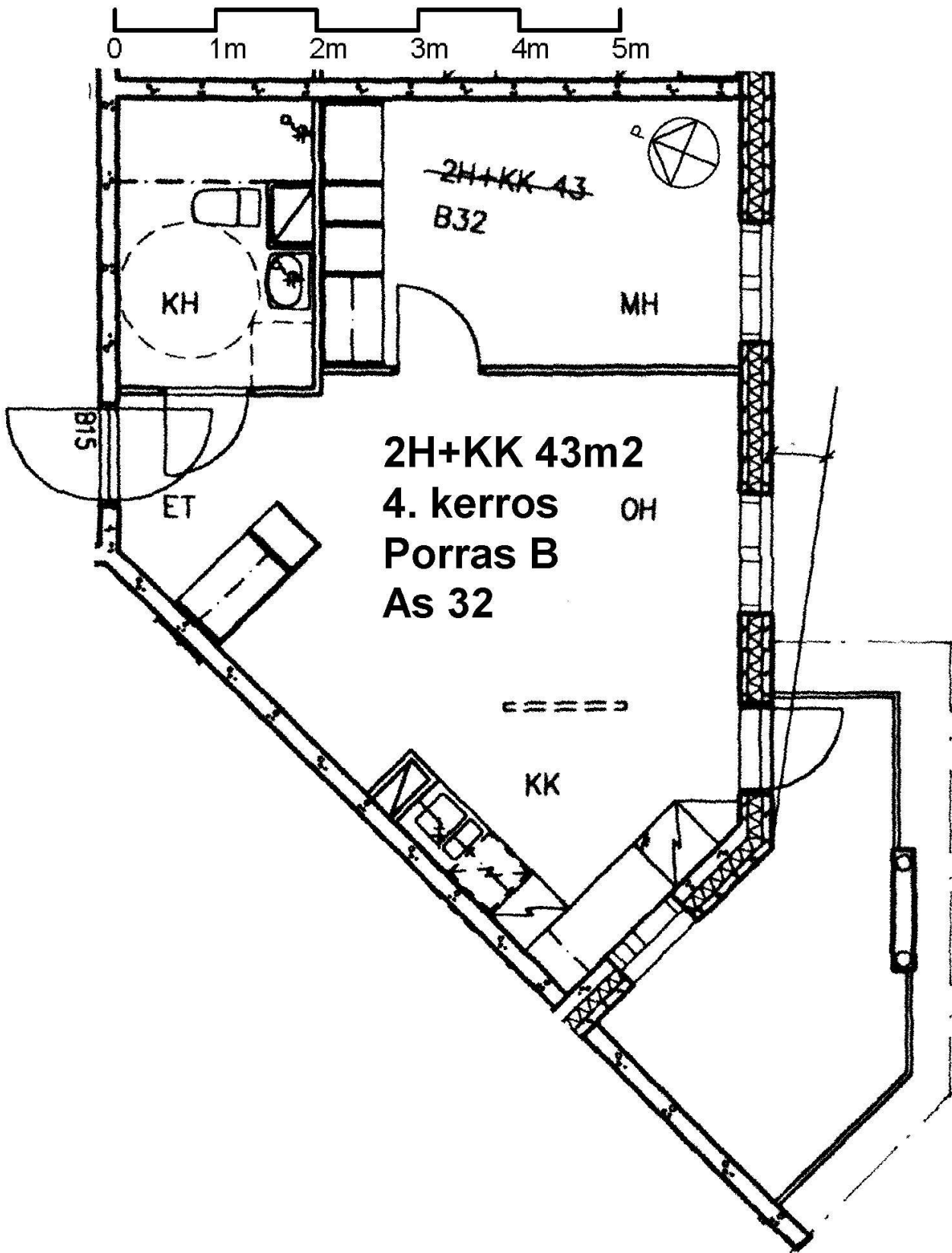
K

KH

ET

VH

B15



0 1m 2m 3m 4m 5m

~~2H+KK 43~~  
B32

KH

MH

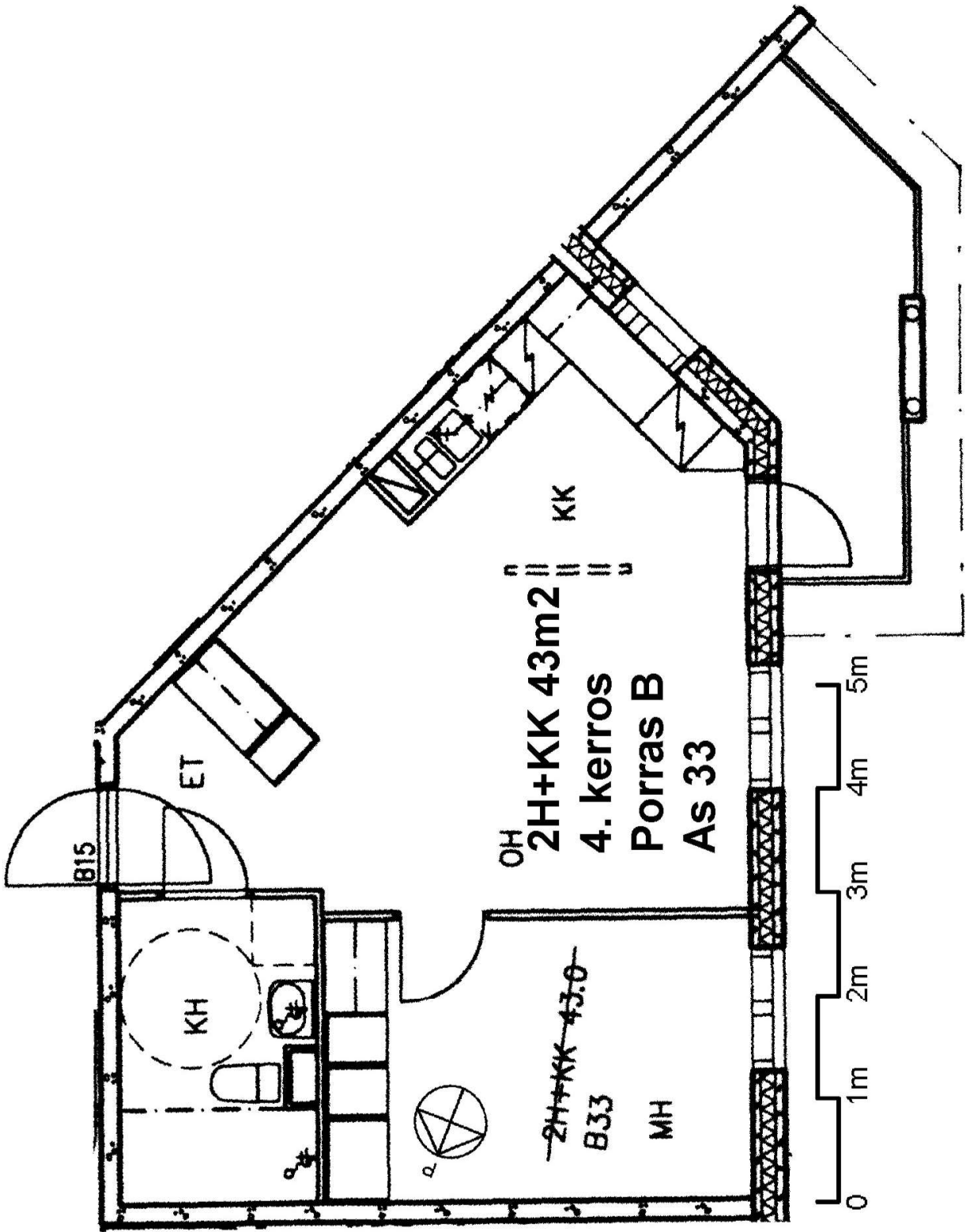
815

ET

**2H+KK 43m2**  
**4. kerros** OH  
**Porras B**  
**As 32**

KK





0 1m 2m 3m 4m 5m

