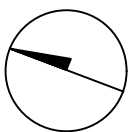
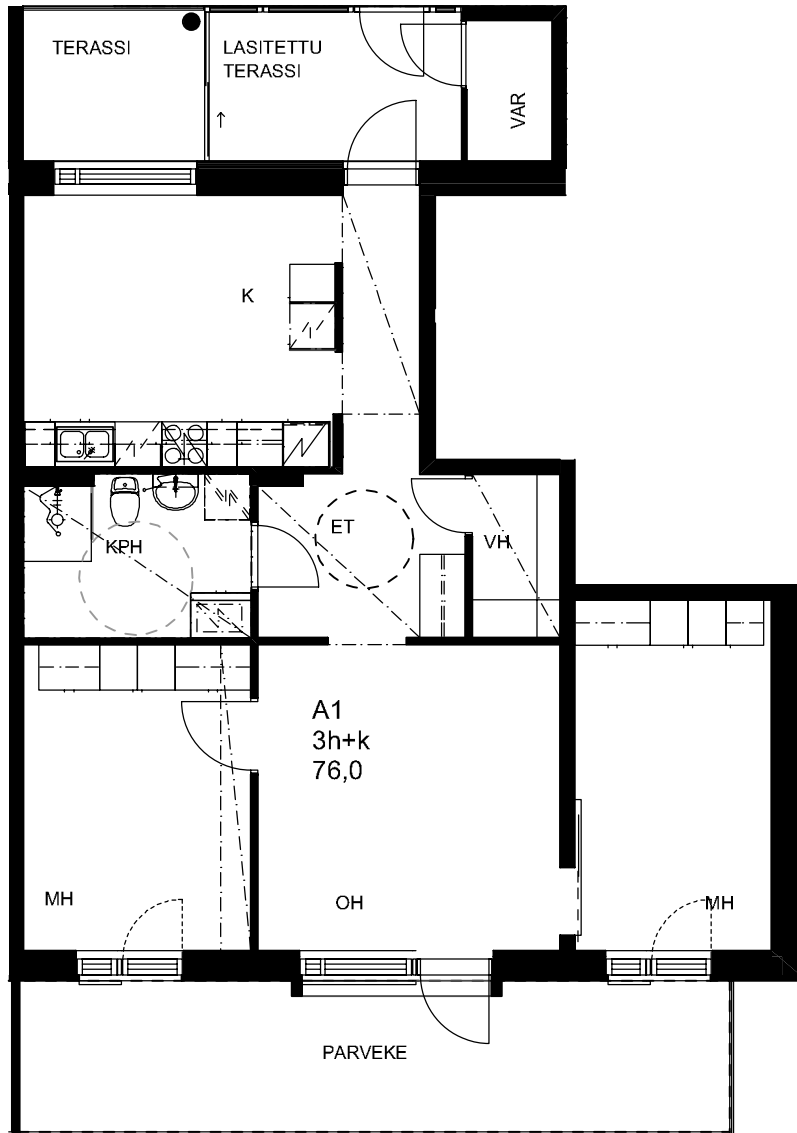
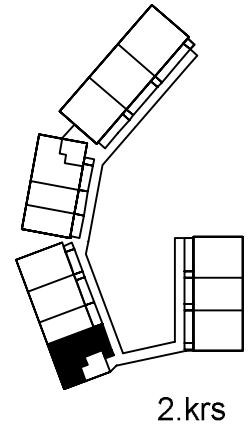


# HEKA VIIKINMÄKI HARJANNETIE 13

Harjannetie 13  
00710 Helsinki

## ASUNTO A1

3h + K  
76,0 m<sup>2</sup>



Arkkitehtitoimisto Tiuri & Lommi Oy

Laivanvarustajankatu 5 00140 Helsinki  
tel 09-621 40 90 fax 09-621 40 08

27.11.2014



1:100

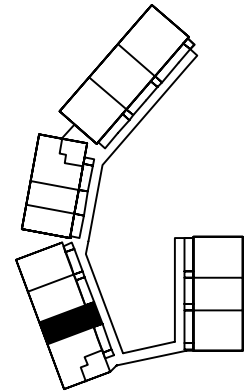
# HEKA VIIKINMÄKI HARJANNETIE 13

Harjannetie 13  
00710 Helsinki

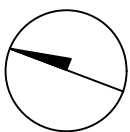
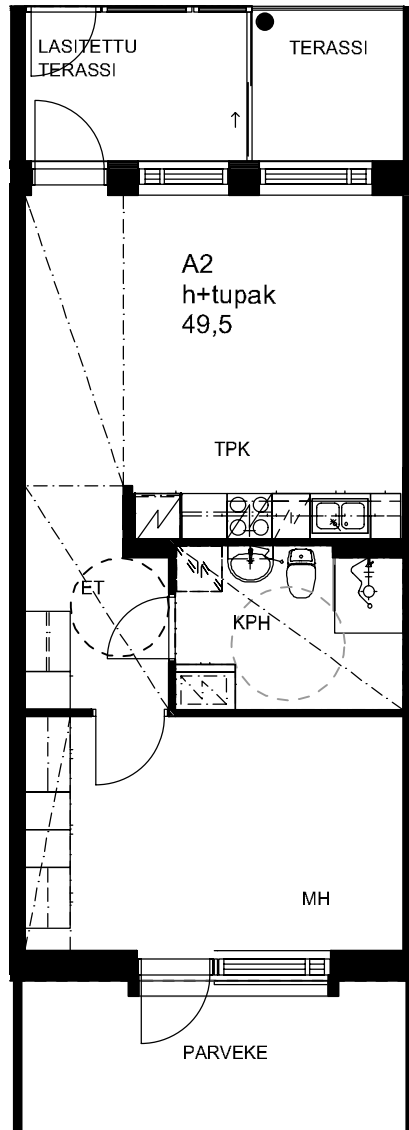
## ASUNTO A2

h + tupak

49,5 m<sup>2</sup>



2.krs



Arkkitehtitoimisto Tiuri & Lommi Oy

Laivanvarustajankatu 5 00140 Helsinki  
tel 09-621 40 90 fax 09-621 40 08

27.11.2014



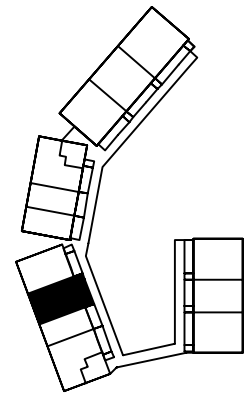
1:100

# HEKA VIIKINMÄKI HARJANNETIE 13

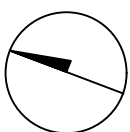
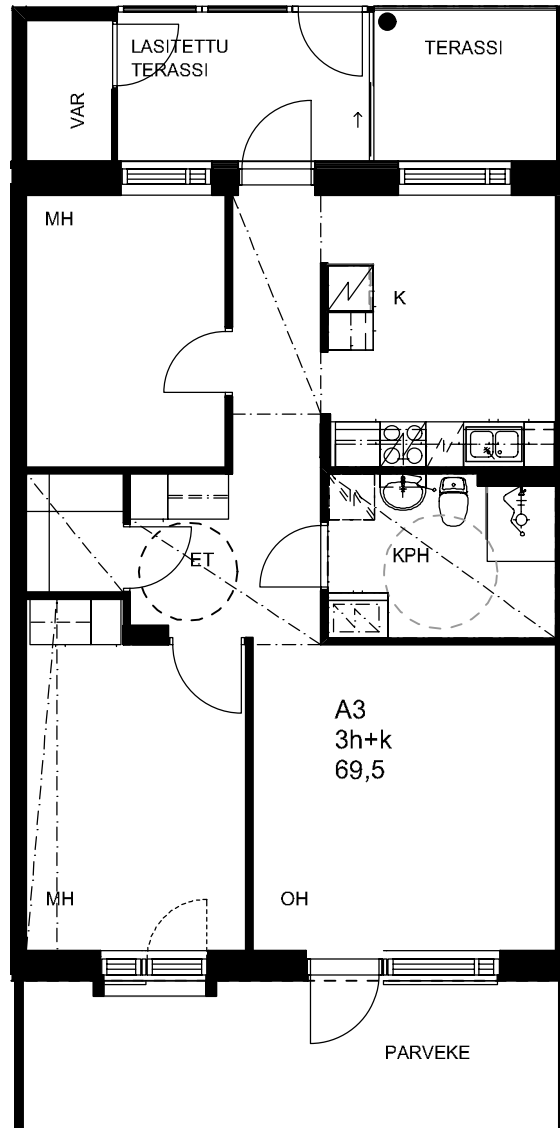
Harjannetie 13  
00710 Helsinki

## ASUNTO A3

3h + K  
69,5 m<sup>2</sup>



2.krs



Arkkitehtitoimisto Tiuri & Lommi Oy

Laivanvarustajankatu 5 00140 Helsinki  
tel 09-621 40 90 fax 09-621 40 08

27.11.2014



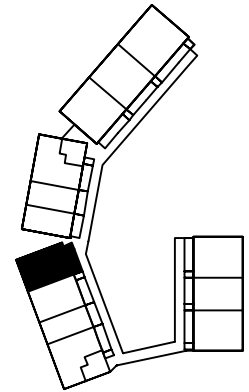
1:100

# HEKA VIIKINMÄKI HARJANNETIE 13

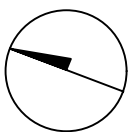
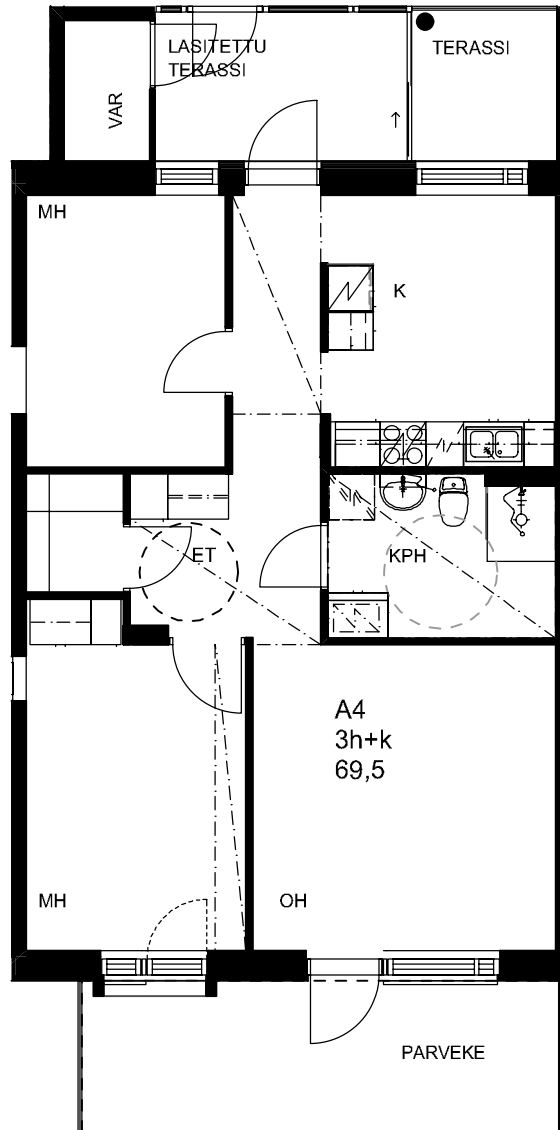
Harjannetie 13  
00710 Helsinki

## ASUNTO A4

3h + K  
69,5 m<sup>2</sup>



2.krs



Arkkitehtitoimisto Tiuri & Lommi Oy

Laivanvarustajankatu 5 00140 Helsinki  
tel 09-621 40 90 fax 09-621 40 08

27.11.2014



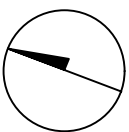
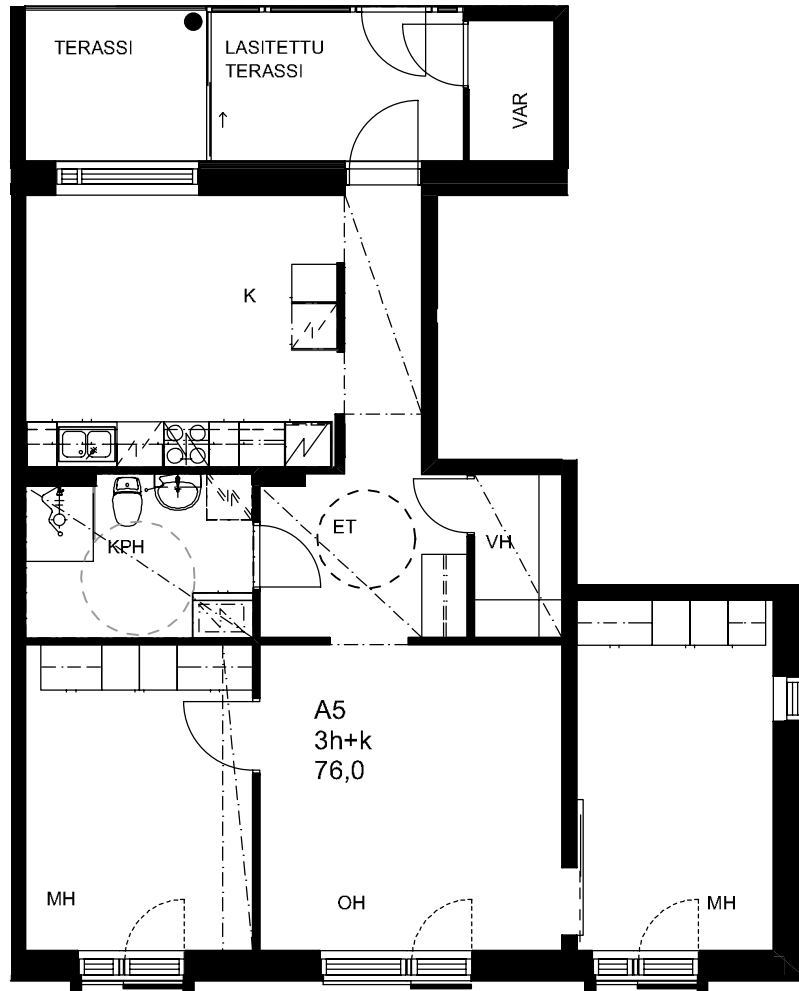
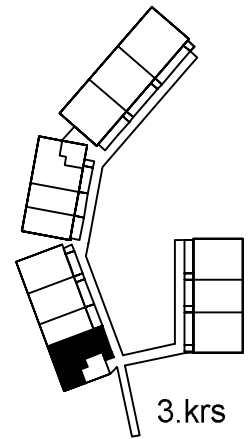
1:100

# HEKA VIIKINMÄKI HARJANNETIE 13

Harjannetie 13  
00710 Helsinki

## ASUNTO A5

3h + K  
76,0 m<sup>2</sup>



Arkkitehtitoimisto Tiuri & Lommi Oy

Laivanvarustajankatu 5 00140 Helsinki  
tel 09-621 40 90 fax 09-621 40 08

27.11.2014



1:100

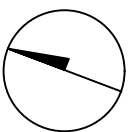
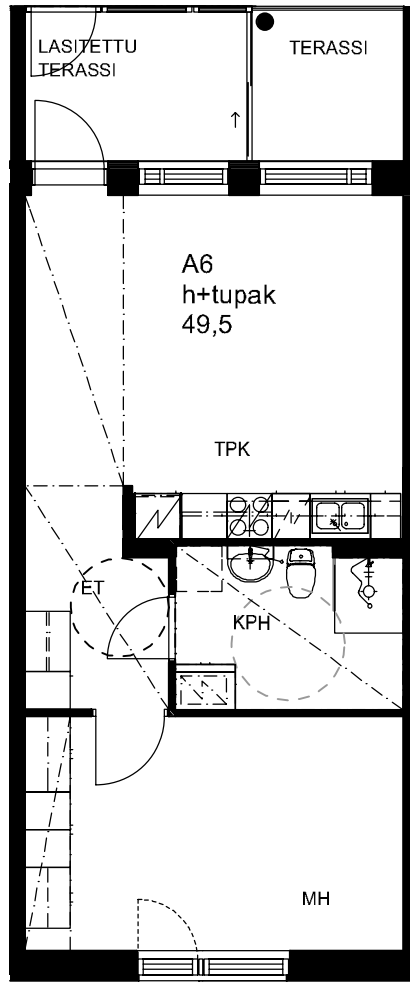
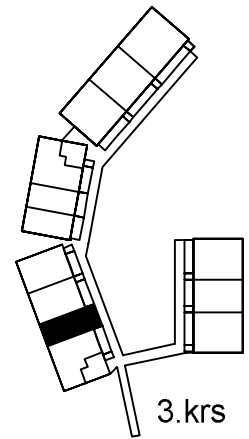
# HEKA VIIKINMÄKI HARJANNETIE 13

Harjannetie 13  
00710 Helsinki

## ASUNTO A6

h + tupak

49,5 m<sup>2</sup>



Arkkitehtitoimisto Tiuri & Lommi Oy

Laivanvarustajankatu 5 00140 Helsinki  
tel 09-621 40 90 fax 09-621 40 08

27.11.2014



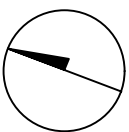
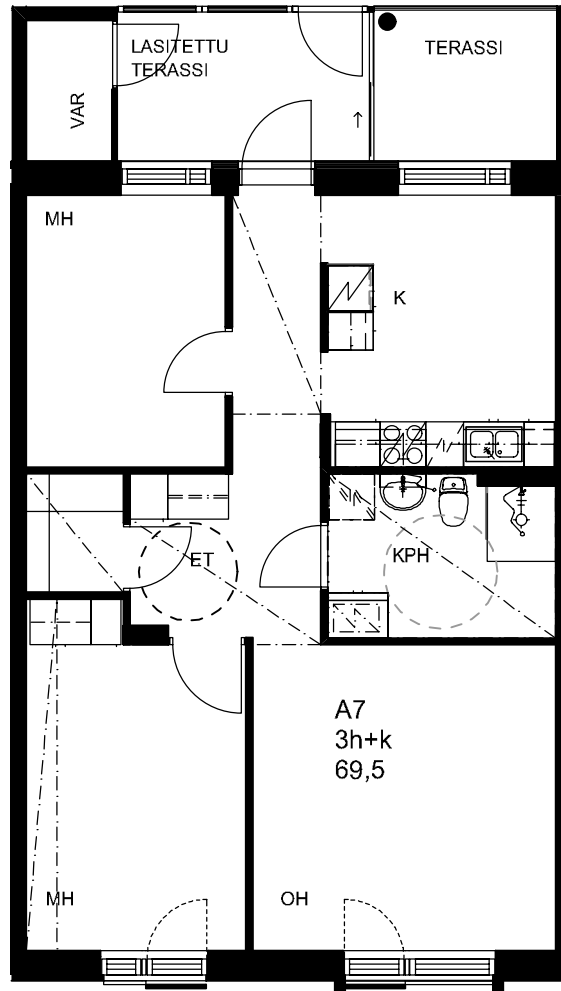
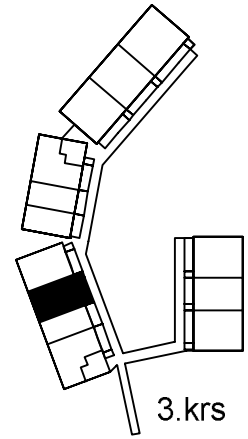
1:100

# HEKA VIIKINMÄKI HARJANNETIE 13

Harjannetie 13  
00710 Helsinki

## ASUNTO A7

3h + K  
69,5 m<sup>2</sup>



Arkkitehtitoimisto Tiuri & Lommi Oy

Laivanvarustajankatu 5 00140 Helsinki  
tel 09-621 40 90 fax 09-621 40 08

27.11.2014



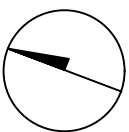
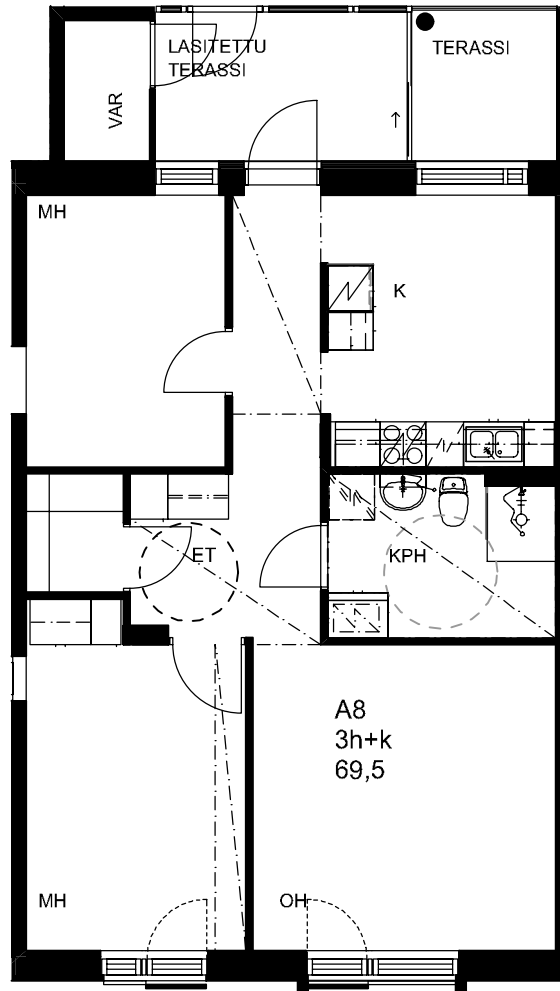
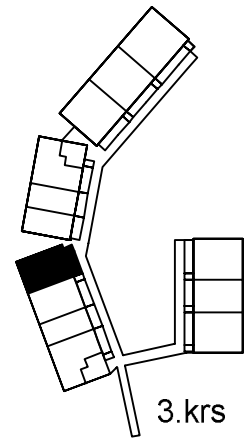
1:100

# HEKA VIIKINMÄKI HARJANNETIE 13

Harjannetie 13  
00710 Helsinki

## ASUNTO A8

3h + K  
69,5 m<sup>2</sup>



Arkkitehtitoimisto Tiuri & Lommi Oy

Laivanvarustajankatu 5 00140 Helsinki  
tel 09-621 40 90 fax 09-621 40 08

27.11.2014



1:100

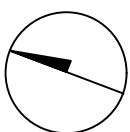
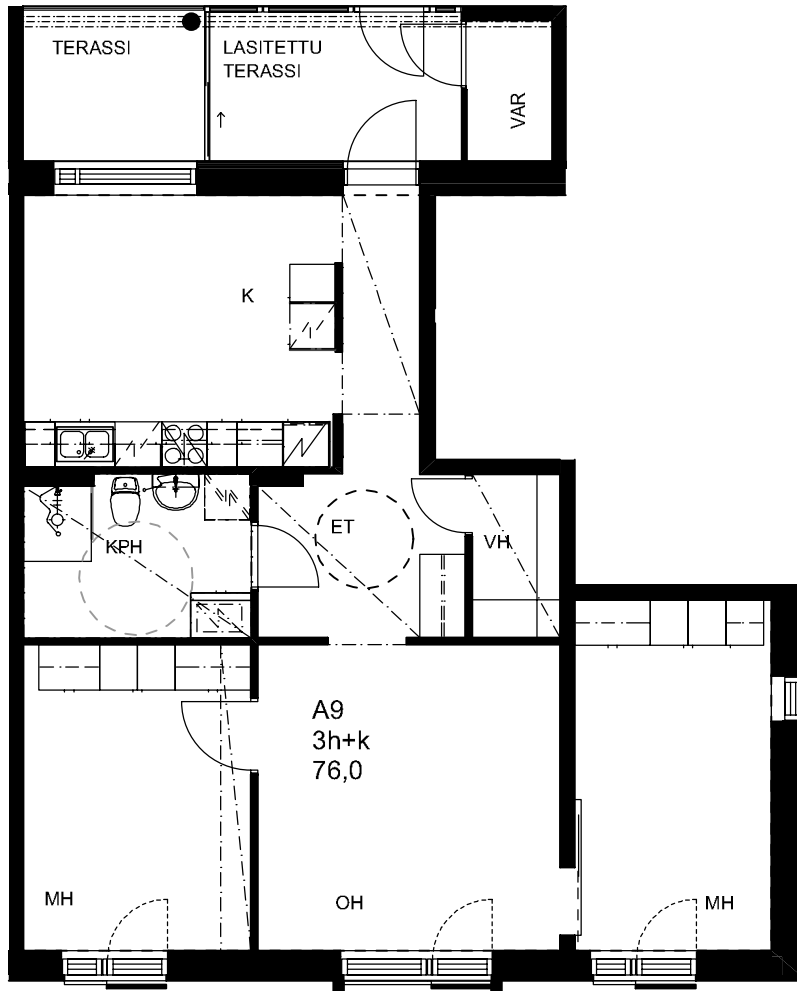
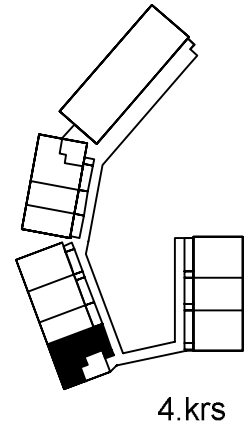


# HEKA VIIKINMÄKI HARJANNETIE 13

Harjannetie 13  
00710 Helsinki

## ASUNTO A9

3h + K  
76,0 m<sup>2</sup>



Arkkitehtitoimisto Tiuri & Lommi Oy

Laivanvarustajankatu 5 00140 Helsinki  
tel 09-621 40 90 fax 09-621 40 08

27.11.2014



1:100

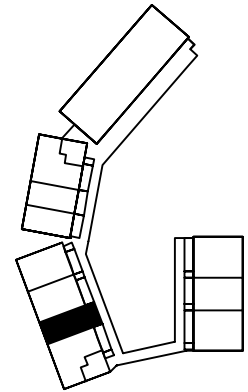
# HEKA VIIKINMÄKI HARJANNETIE 13

Harjannetie 13  
00710 Helsinki

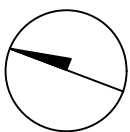
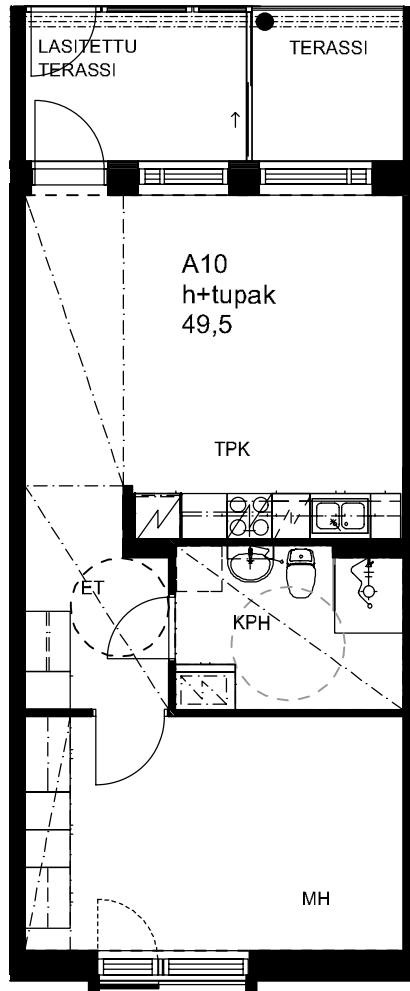
## ASUNTO A10

h + tupak

49,5 m<sup>2</sup>



4.krs



Arkkitehtitoimisto Tiuri & Lommi Oy

Laivanvarustajankatu 5 00140 Helsinki  
tel 09-621 40 90 fax 09-621 40 08

27.11.2014



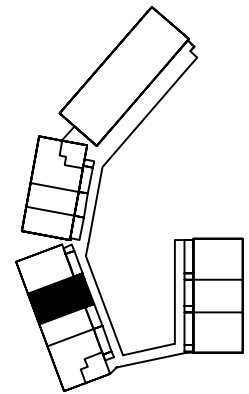
1:100

# HEKA VIIKINMÄKI HARJANNETIE 13

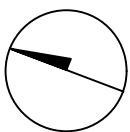
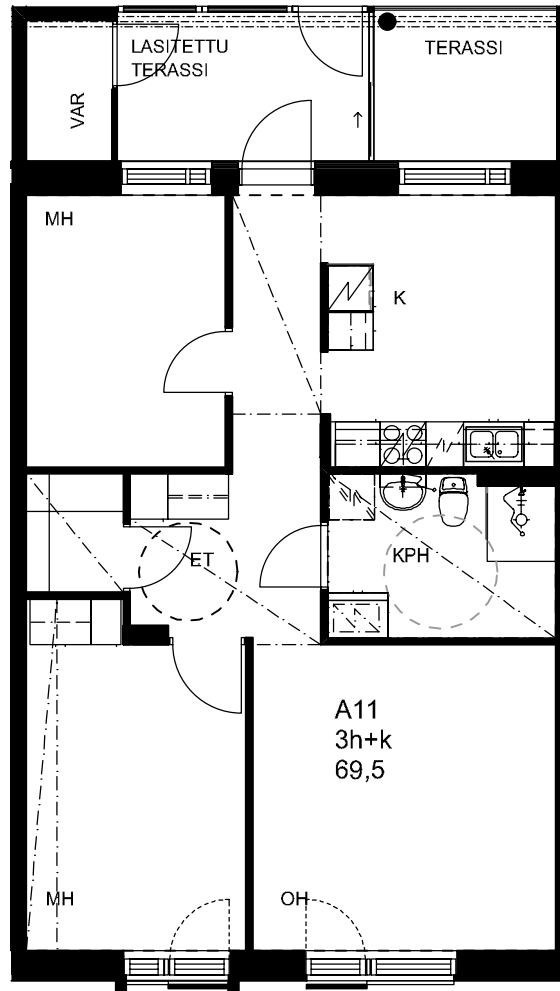
Harjannetie 13  
00710 Helsinki

## ASUNTO A11

3h + K  
69,5 m<sup>2</sup>



4.krs



Arkkitehtitoimisto Tiuri & Lommi Oy

Laivanvarustajankatu 5 00140 Helsinki  
tel 09-621 40 90 fax 09-621 40 08

27.11.2014



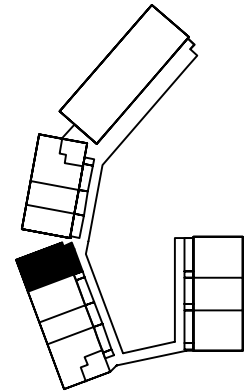
1:100

# HEKA VIIKINMÄKI HARJANNETIE 13

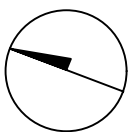
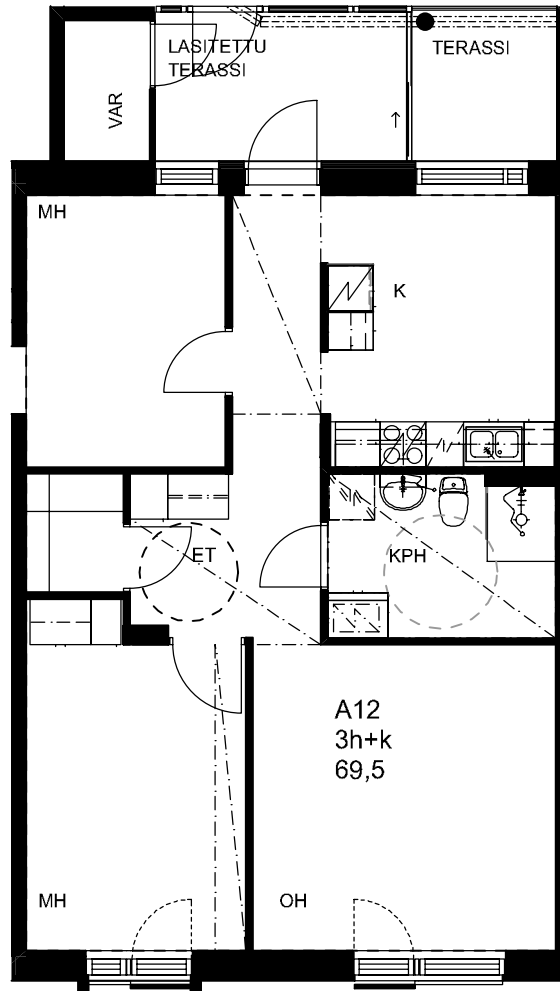
Harjannetie 13  
00710 Helsinki

## ASUNTO A12

3h + K  
69,5 m<sup>2</sup>



4.krs



Arkkitehtitoimisto Tiuri & Lommi Oy

Laivanvarustajankatu 5 00140 Helsinki  
tel 09-621 40 90 fax 09-621 40 08

27.11.2014



1:100

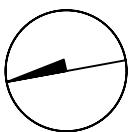
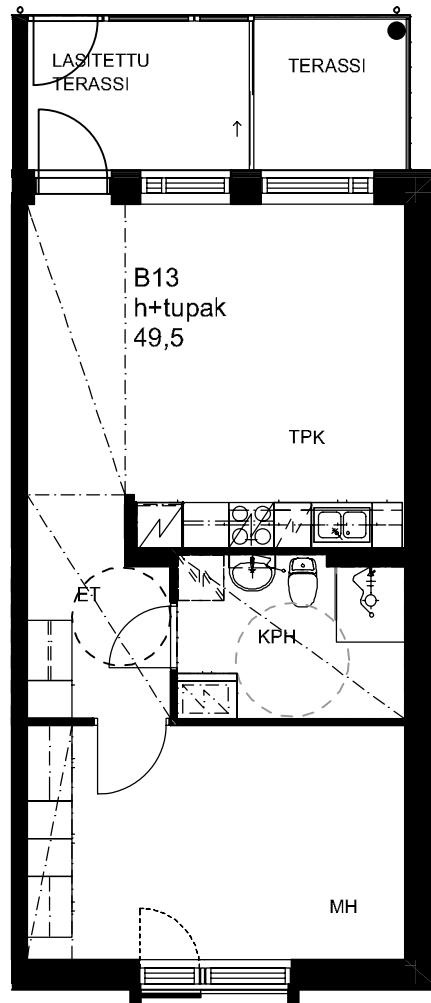
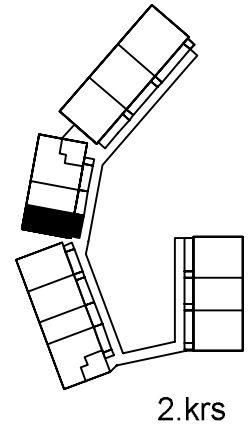
# HEKA VIIKINMÄKI HARJANNETIE 13

Harjannetie 13  
00710 Helsinki

## ASUNTO B13

h + tupak

49,5 m<sup>2</sup>



Arkkitehtitoimisto Tiuri & Lommi Oy

Laivanvarustajankatu 5 00140 Helsinki  
tel 09-621 40 90 fax 09-621 40 08

27.11.2014



1:100

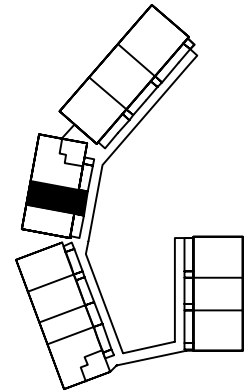
# HEKA VIIKINMÄKI HARJANNETIE 13

Harjannetie 13  
00710 Helsinki

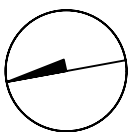
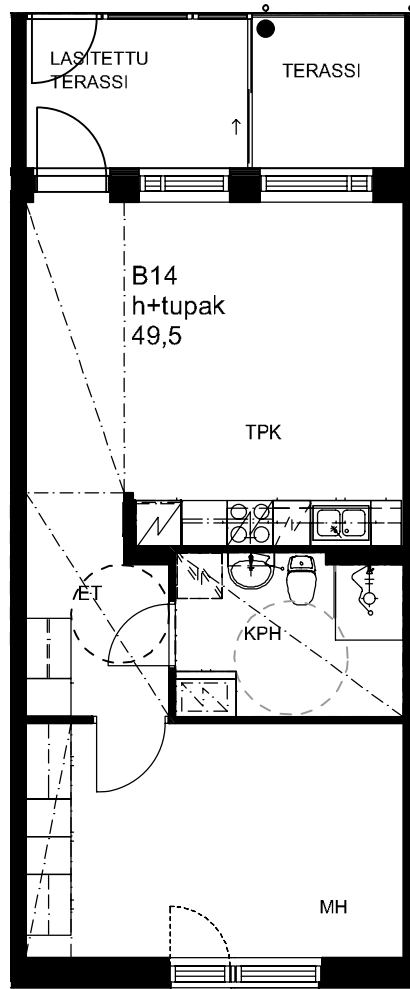
## ASUNTO B14

h + tupak

49,5 m<sup>2</sup>



2.krs



Arkkitehtitoimisto Tiuri & Lommi Oy

Laivanvarustajankatu 5 00140 Helsinki  
tel 09-621 40 90 fax 09-621 40 08

27.11.2014



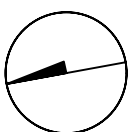
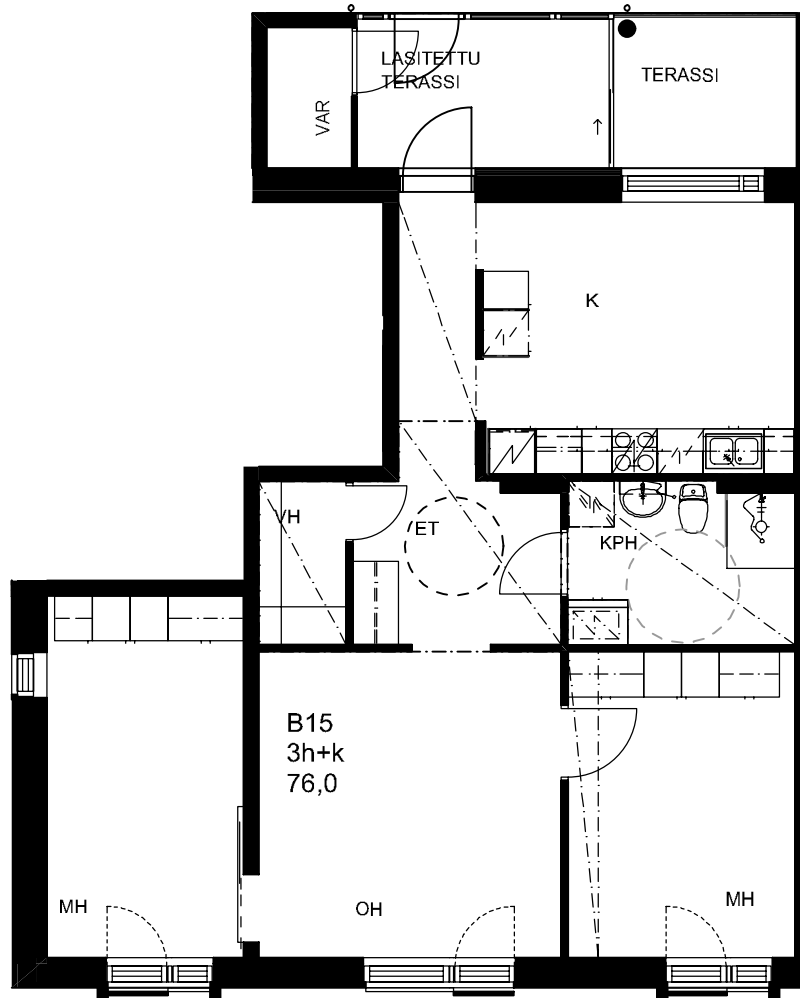
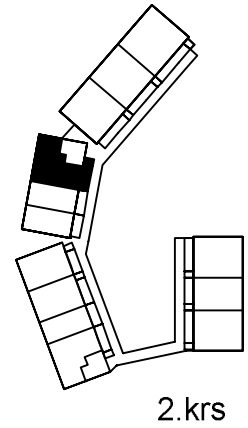
1:100

# HEKA VIIKINMÄKI HARJANNETIE 13

Harjannetie 13  
00710 Helsinki

## ASUNTO B15

3h + K  
76,0 m<sup>2</sup>



Arkkitehtitoimisto Tiuri & Lommi Oy

Laivanvarustajankatu 5 00140 Helsinki  
tel 09-621 40 90 fax 09-621 40 08

27.11.2014



1:100

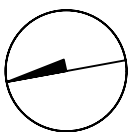
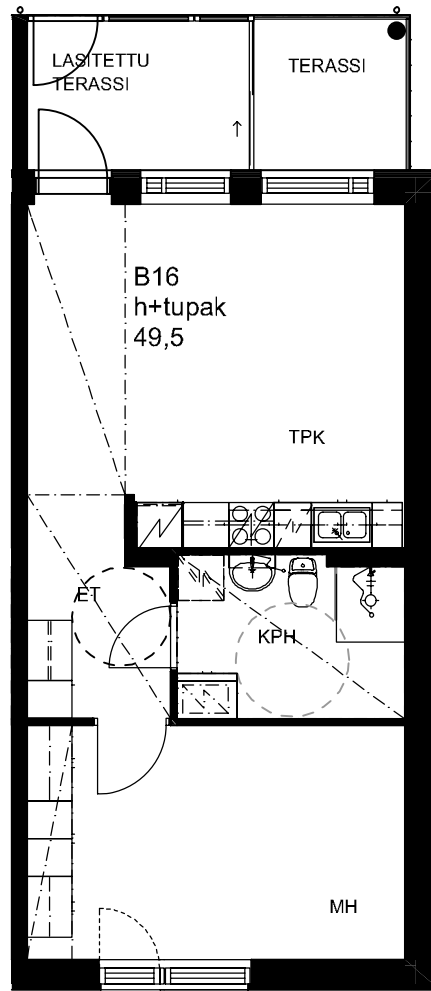
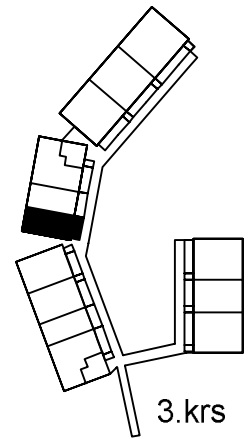
# HEKA VIIKINMÄKI HARJANNETIE 13

Harjannetie 13  
00710 Helsinki

## ASUNTO B16

h + tupak

49,5 m<sup>2</sup>



Arkkitehtitoimisto Tiuri & Lommi Oy

Laivanvarustajankatu 5 00140 Helsinki  
tel 09-621 40 90 fax 09-621 40 08

27.11.2014



1:100



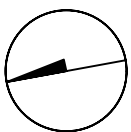
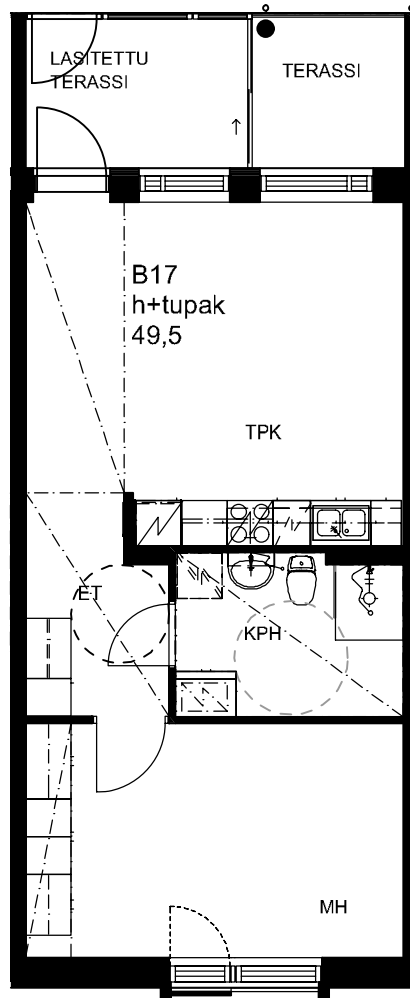
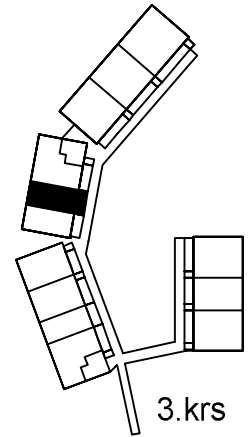
# HEKA VIIKINMÄKI HARJANNETIE 13

Harjannetie 13  
00710 Helsinki

## ASUNTO B17

h + tupak

49,5 m<sup>2</sup>



Arkkitehtitoimisto Tiuri & Lommi Oy

Laivanvarustajankatu 5 00140 Helsinki  
tel 09-621 40 90 fax 09-621 40 08

27.11.2014



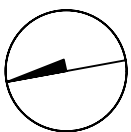
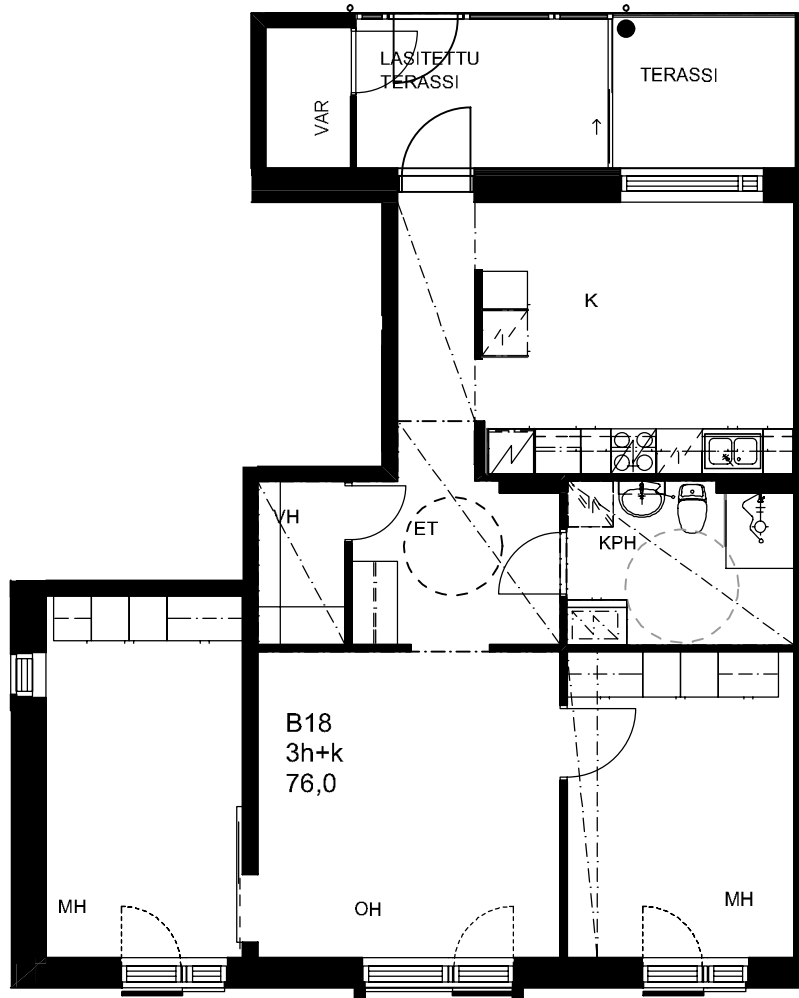
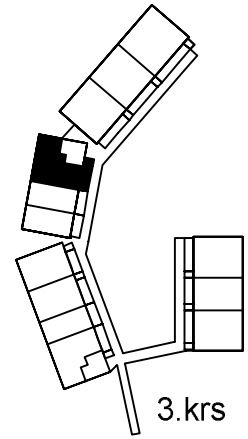
1:100

# HEKA VIIKINMÄKI HARJANNETIE 13

Harjannetie 13  
00710 Helsinki

## ASUNTO B18

3h + K  
76,0 m<sup>2</sup>



Arkkitehtitoimisto Tiuri & Lommi Oy

Laivanvarustajankatu 5 00140 Helsinki  
tel 09-621 40 90 fax 09-621 40 08

27.11.2014



1:100

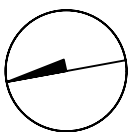
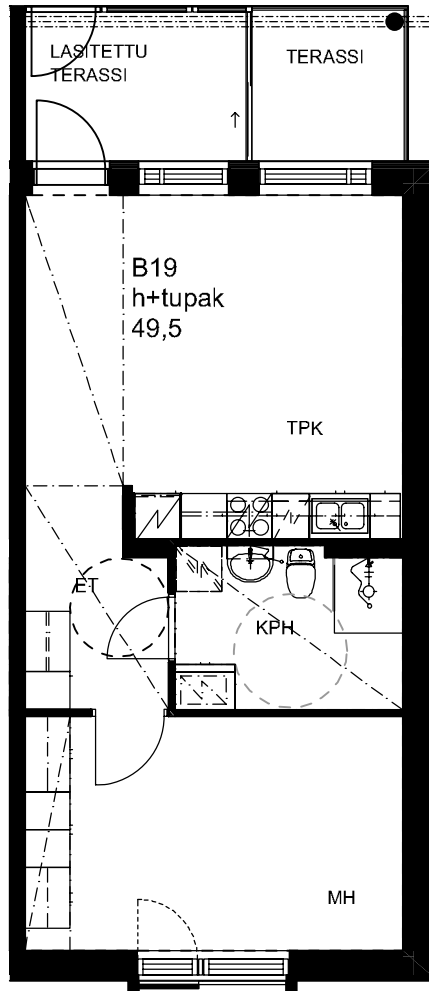
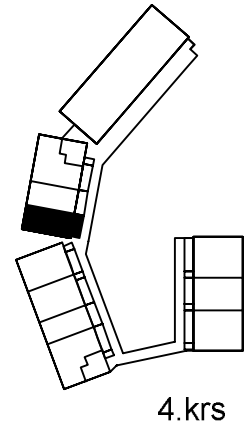
# HEKA VIIKINMÄKI HARJANNETIE 13

Harjannetie 13  
00710 Helsinki

## ASUNTO B19

h + tupak

49,5 m<sup>2</sup>



Arkkitehtitoimisto Tiuri & Lommi Oy

Laivanvarustajankatu 5 00140 Helsinki  
tel 09-621 40 90 fax 09-621 40 08

27.11.2014



1:100

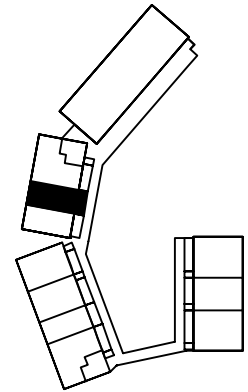
# HEKA VIIKINMÄKI HARJANNETIE 13

Harjannetie 13  
00710 Helsinki

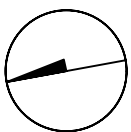
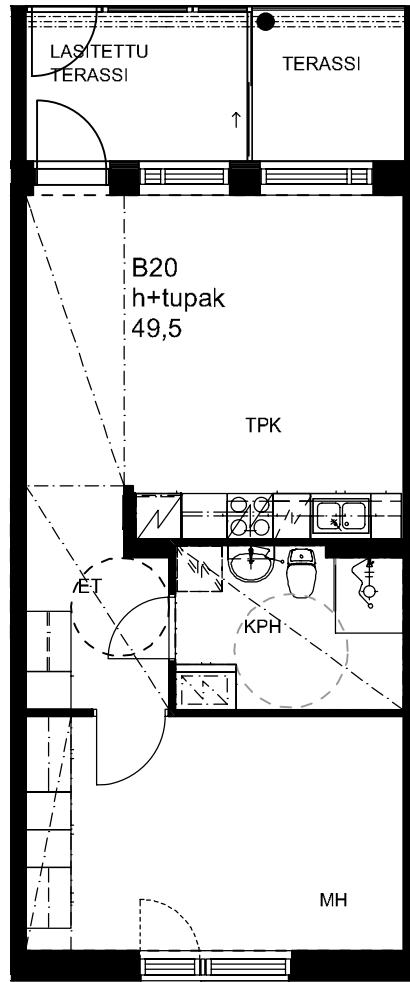
## ASUNTO B20

h + tupak

49,5 m<sup>2</sup>



4.krs



Arkkitehtitoimisto Tiuri & Lommi Oy

Laivanvarustajankatu 5 00140 Helsinki  
tel 09-621 40 90 fax 09-621 40 08

27.11.2014



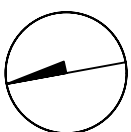
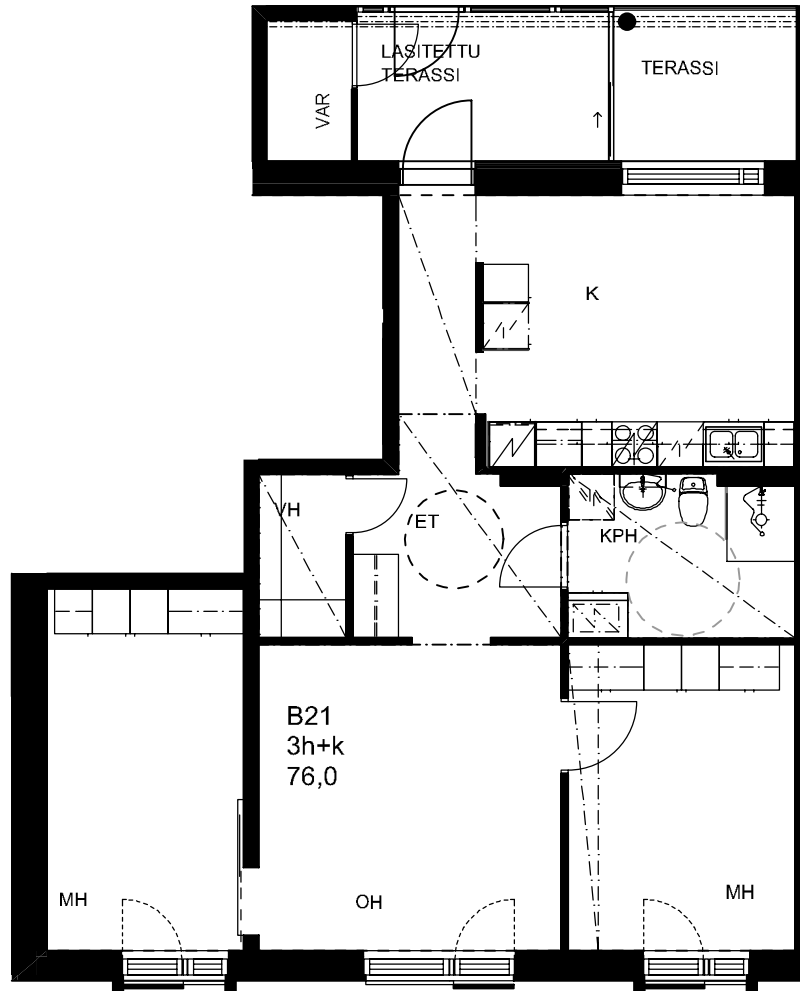
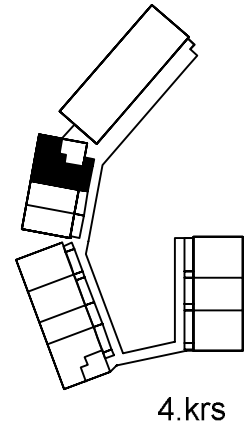
1:100

# HEKA VIIKINMÄKI HARJANNETIE 13

Harjannetie 13  
00710 Helsinki

## ASUNTO B21

3h + K  
76,0 m<sup>2</sup>



Arkkitehtitoimisto Tiuri & Lommi Oy  
Laivanvarustajankatu 5 00140 Helsinki  
tel 09-621 40 90 fax 09-621 40 08

27.11.2014



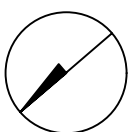
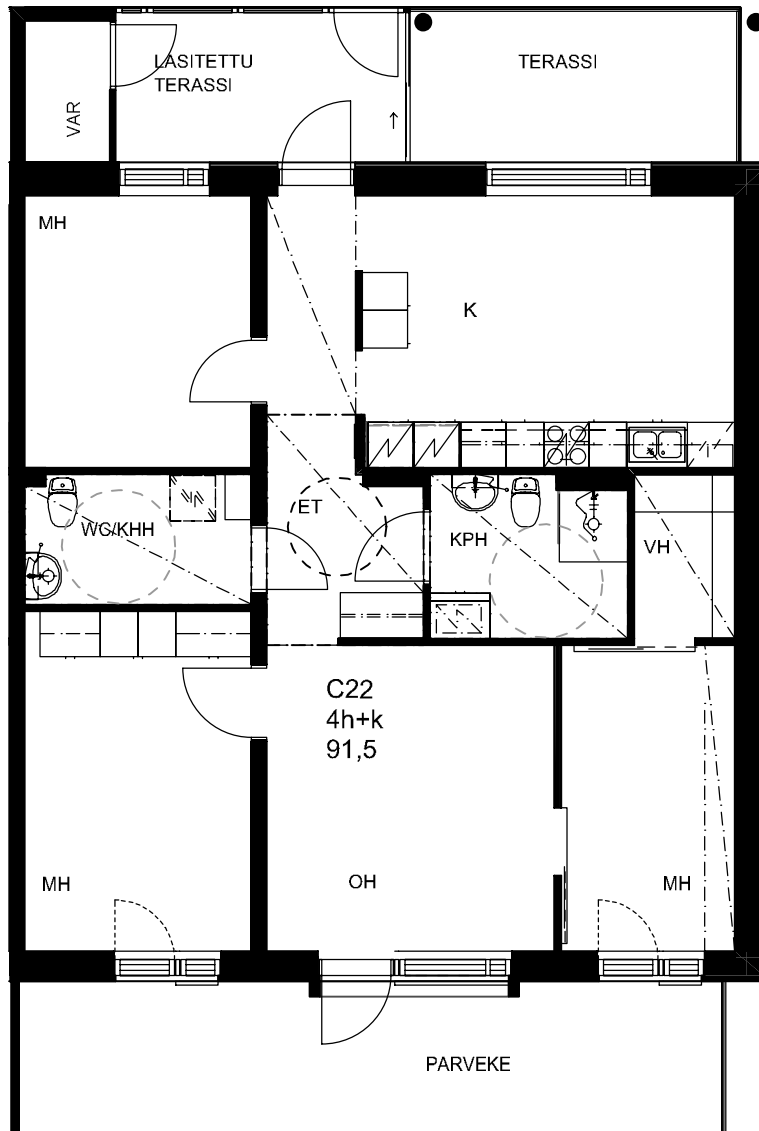
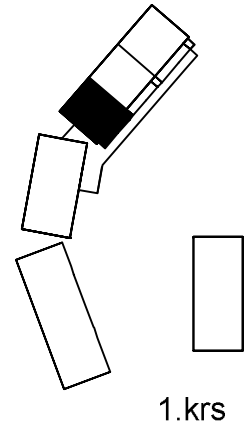
1:100

# HEKA VIIKINMÄKI HARJANNETIE 13

Harjannetie 13  
00710 Helsinki

## ASUNTO C22

4h + K  
91,5 m<sup>2</sup>



Arkkitehtitoimisto Tiuri & Lommi Oy

Laivanvarustajankatu 5 00140 Helsinki  
tel 09-621 40 90 fax 09-621 40 08

27.11.2014



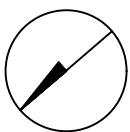
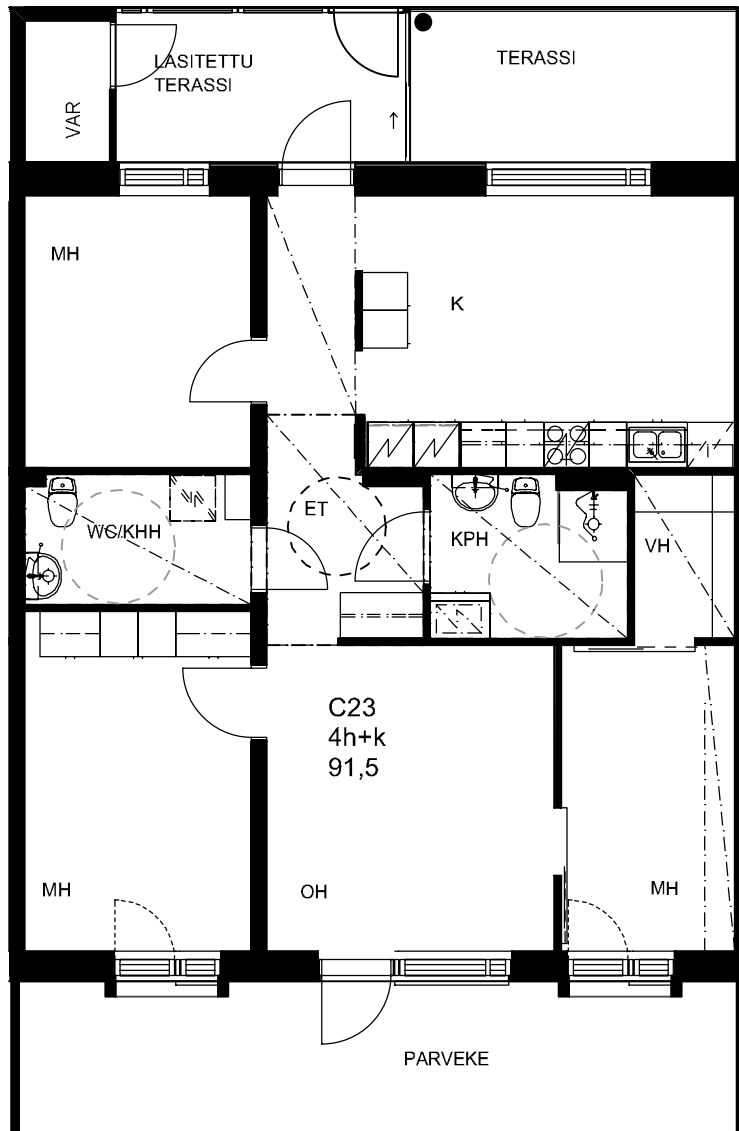
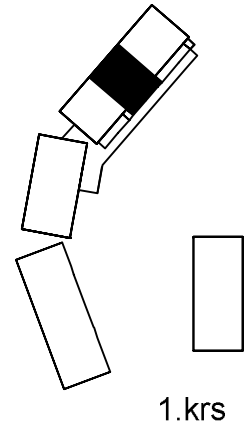
1:100

# HEKA VIIKINMÄKI HARJANNETIE 13

Harjannetie 13  
00710 Helsinki

## ASUNTO C23

4h + K  
91,5 m<sup>2</sup>



Arkkitehtitoimisto Tiuri & Lommi Oy

Laivanvarustajankatu 5 00140 Helsinki  
tel 09-621 40 90 fax 09-621 40 08

27.11.2014



1:100

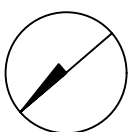
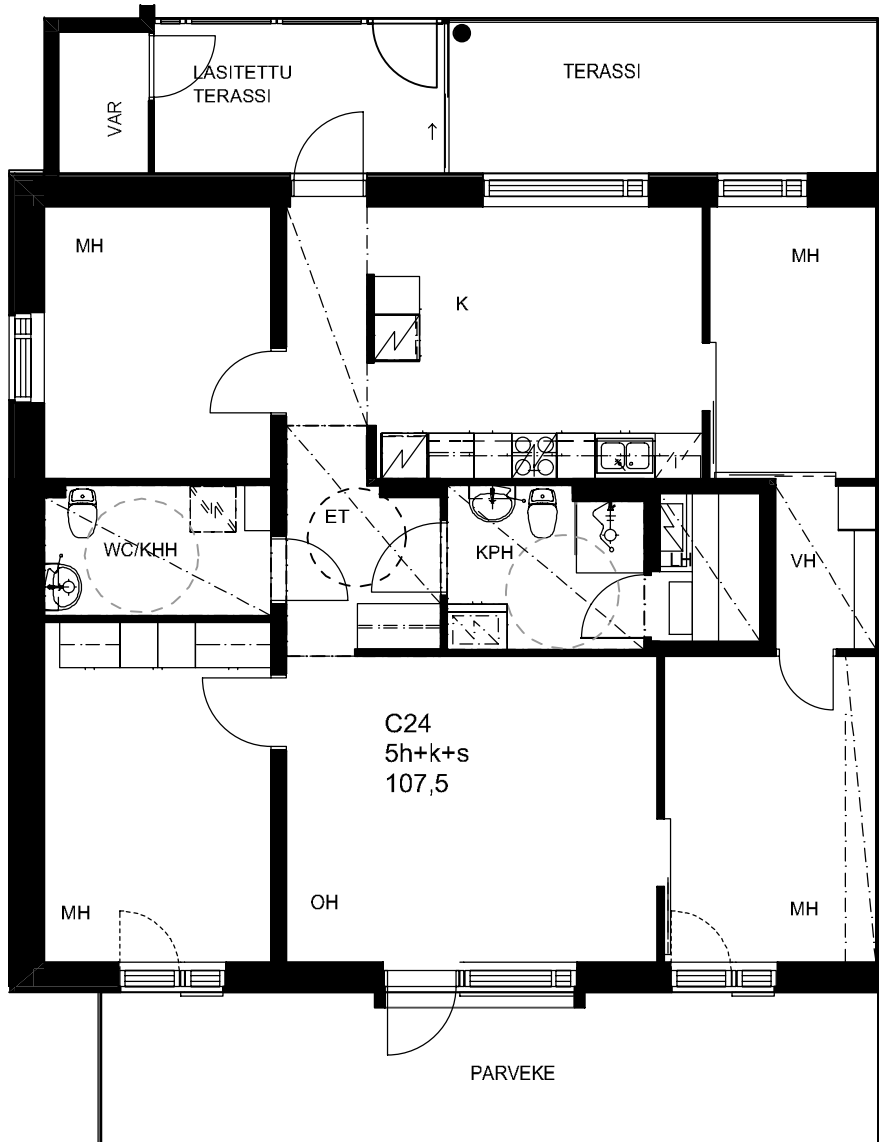
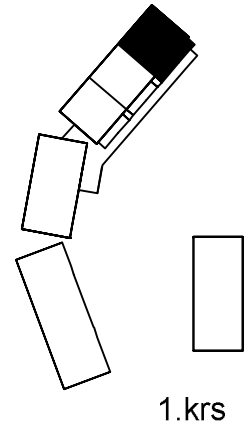
# HEKA VIIKINMÄKI HARJANNETIE 13

Harjannetie 13  
00710 Helsinki

## ASUNTO C24

5h + K + s

107,5 m<sup>2</sup>



Arkkitehtitoimisto Tiuri & Lommi Oy

Laivanvarustajankatu 5 00140 Helsinki  
tel 09-621 40 90 fax 09-621 40 08

27.11.2014



1:100

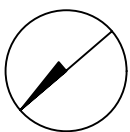
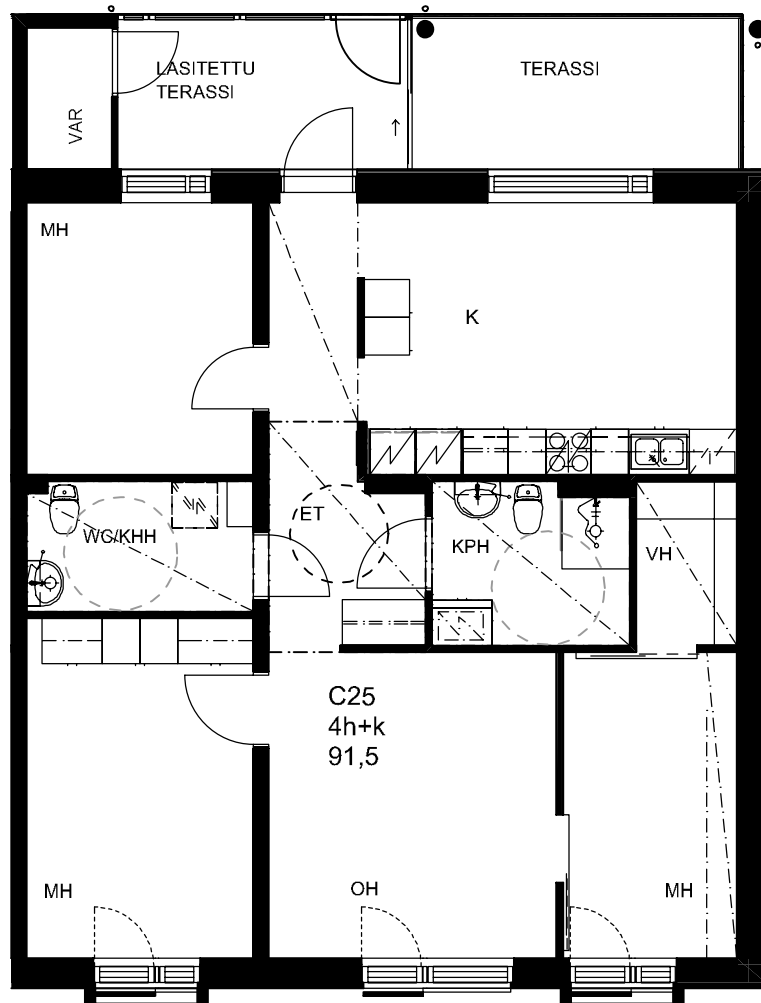
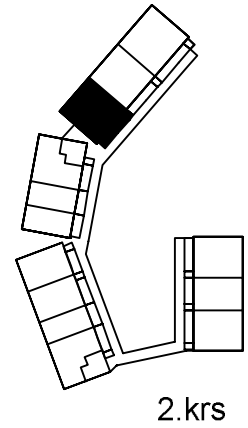


# HEKA VIIKINMÄKI HARJANNETIE 13

Harjannetie 13  
00710 Helsinki

## ASUNTO C25

4h + K  
91,5 m<sup>2</sup>



Arkkitehtitoimisto Tiuri & Lommi Oy

Laivanvarustajankatu 5 00140 Helsinki  
tel 09-621 40 90 fax 09-621 40 08

27.11.2014



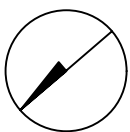
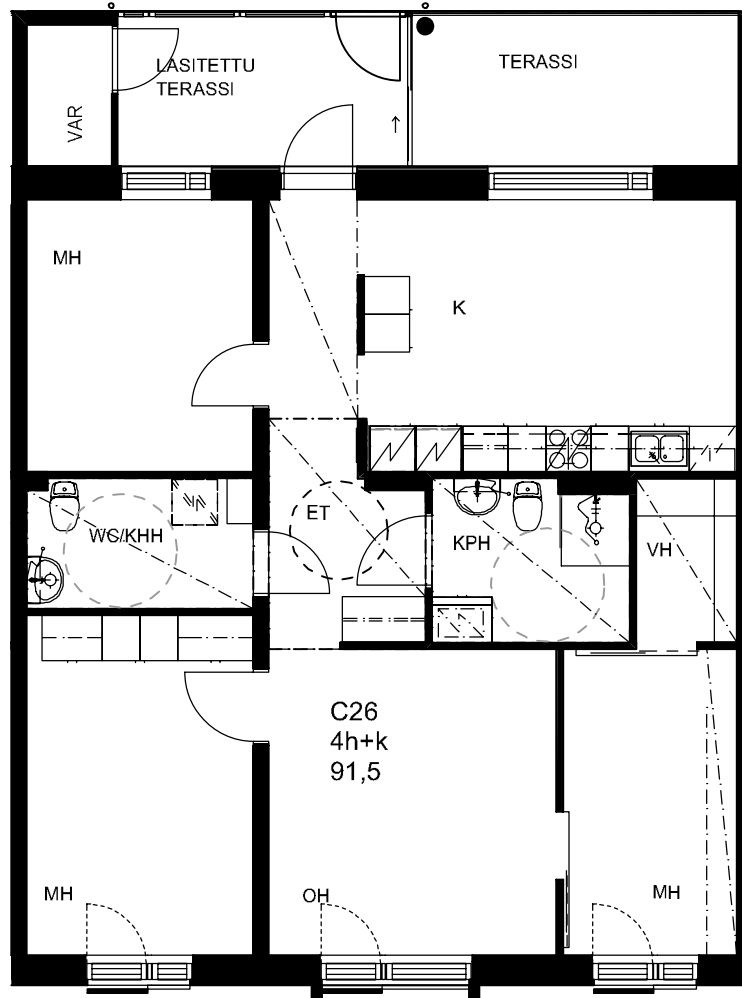
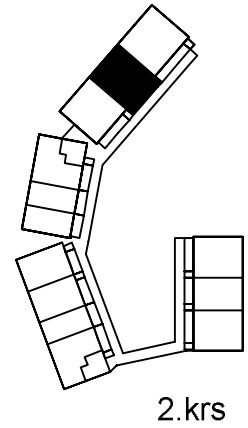
1:100

# HEKA VIIKINMÄKI HARJANNETIE 13

Harjannetie 13  
00710 Helsinki

## ASUNTO C26

4h + K  
91,5 m<sup>2</sup>



Arkkitehtitoimisto Tiuri & Lommi Oy

Laivanvarustajankatu 5 00140 Helsinki  
tel 09-621 40 90 fax 09-621 40 08

27.11.2014



1:100

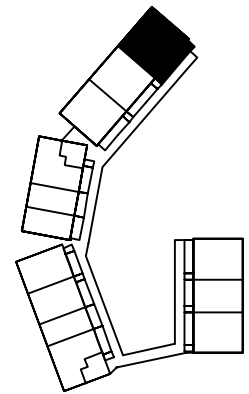
# HEKA VIIKINMÄKI HARJANNETIE 13

Harjannetie 13  
00710 Helsinki

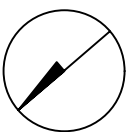
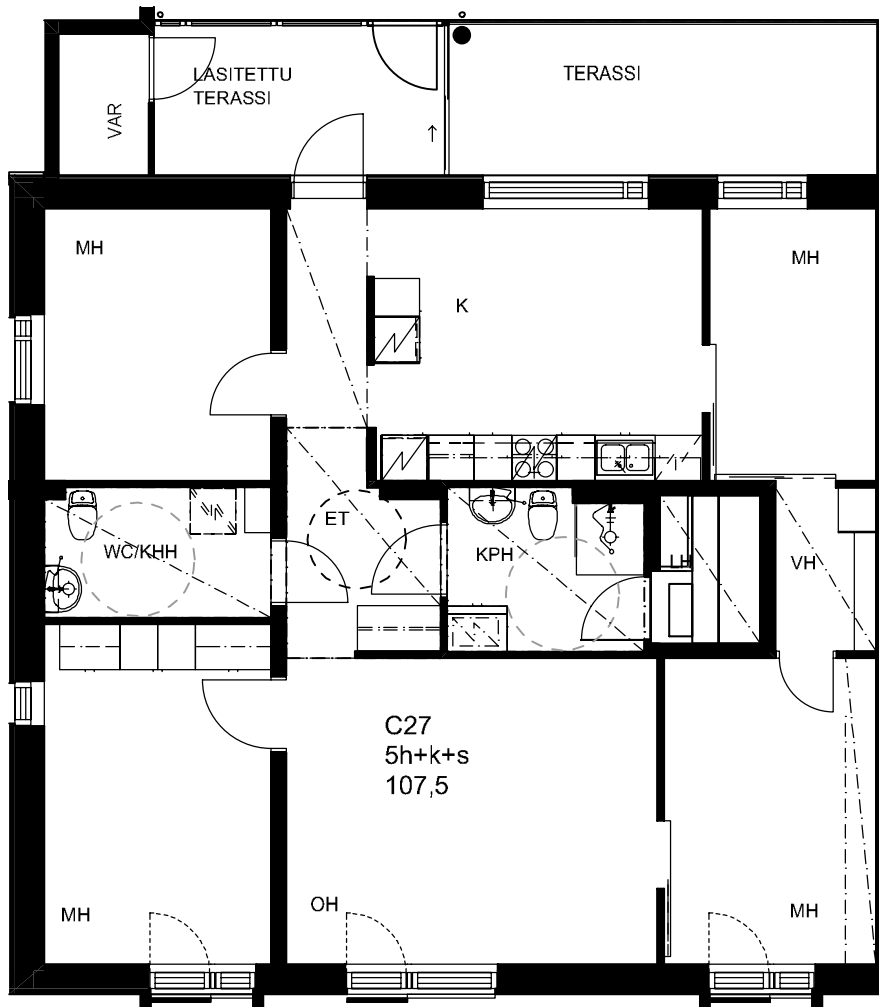
## ASUNTO C27

5h + K + s

107,5 m<sup>2</sup>



2.krs



Arkkitehtitoimisto Tiuri & Lommi Oy

Laivanvarustajankatu 5 00140 Helsinki  
tel 09-621 40 90 fax 09-621 40 08

27.11.2014



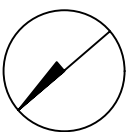
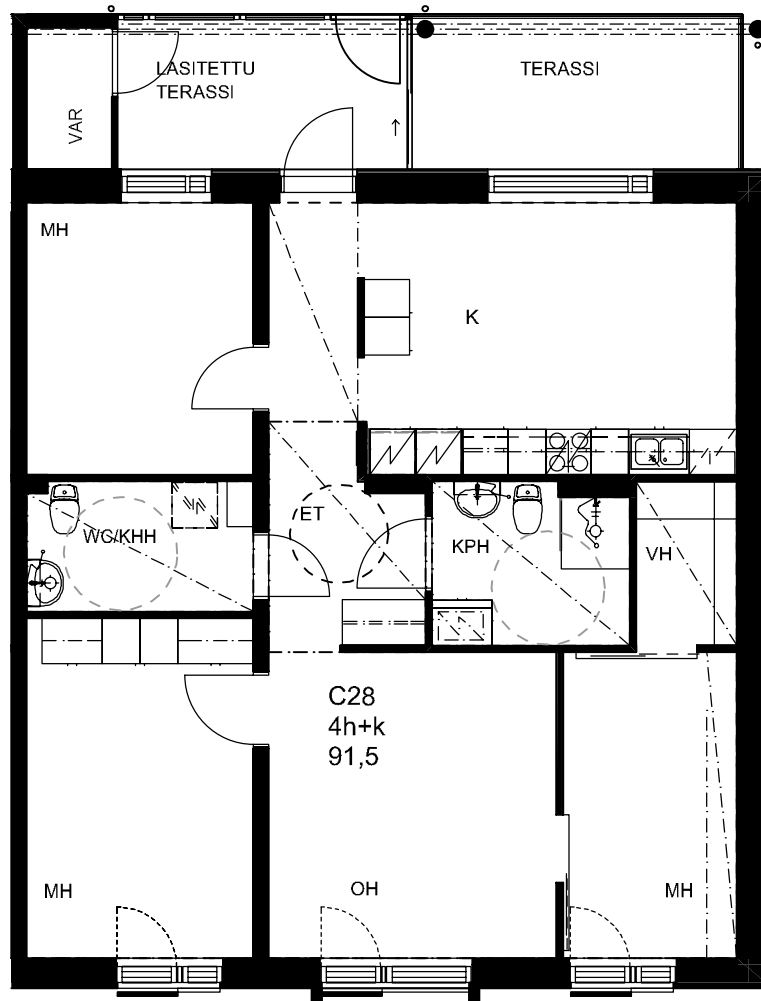
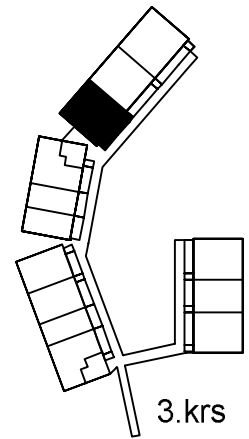
1:100

# HEKA VIIKINMÄKI HARJANNETIE 13

Harjannetie 13  
00710 Helsinki

## ASUNTO C28

4h + K  
91,5 m<sup>2</sup>



Arkkitehtitoimisto Tiuri & Lommi Oy

Laivanvarustajankatu 5 00140 Helsinki  
tel 09-621 40 90 fax 09-621 40 08

27.11.2014



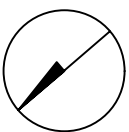
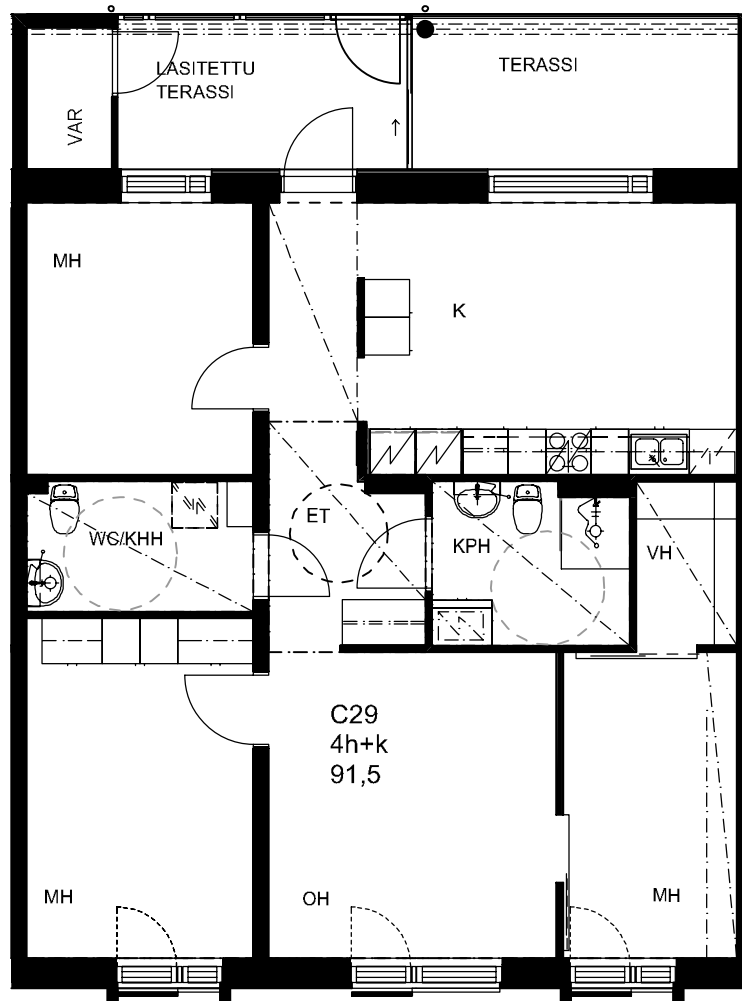
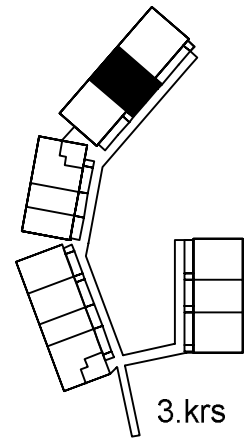
1:100

# HEKA VIIKINMÄKI HARJANNETIE 13

Harjannetie 13  
00710 Helsinki

## ASUNTO C29

4h + K  
91,5 m<sup>2</sup>



Arkkitehtitoimisto Tiuri & Lommi Oy

Laivanvarustajankatu 5 00140 Helsinki  
tel 09-621 40 90 fax 09-621 40 08

27.11.2014



1:100

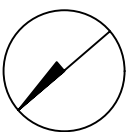
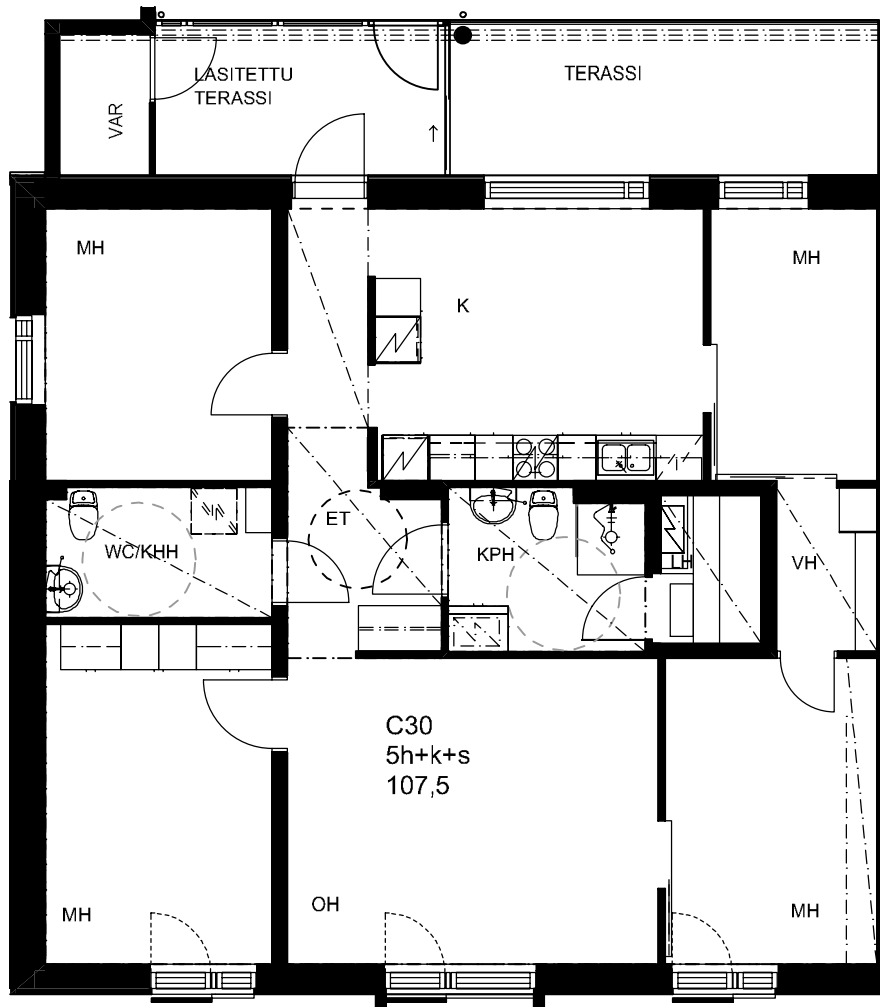
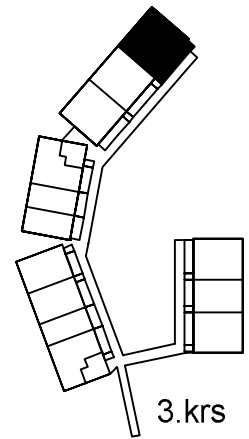
# HEKA VIIKINMÄKI HARJANNETIE 13

Harjannetie 13  
00710 Helsinki

## ASUNTO C30

5h + K + s

107,5 m<sup>2</sup>



Arkkitehtitoimisto Tiuri & Lommi Oy

Laivanvarustajankatu 5 00140 Helsinki  
tel 09-621 40 90 fax 09-621 40 08

27.11.2014



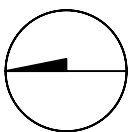
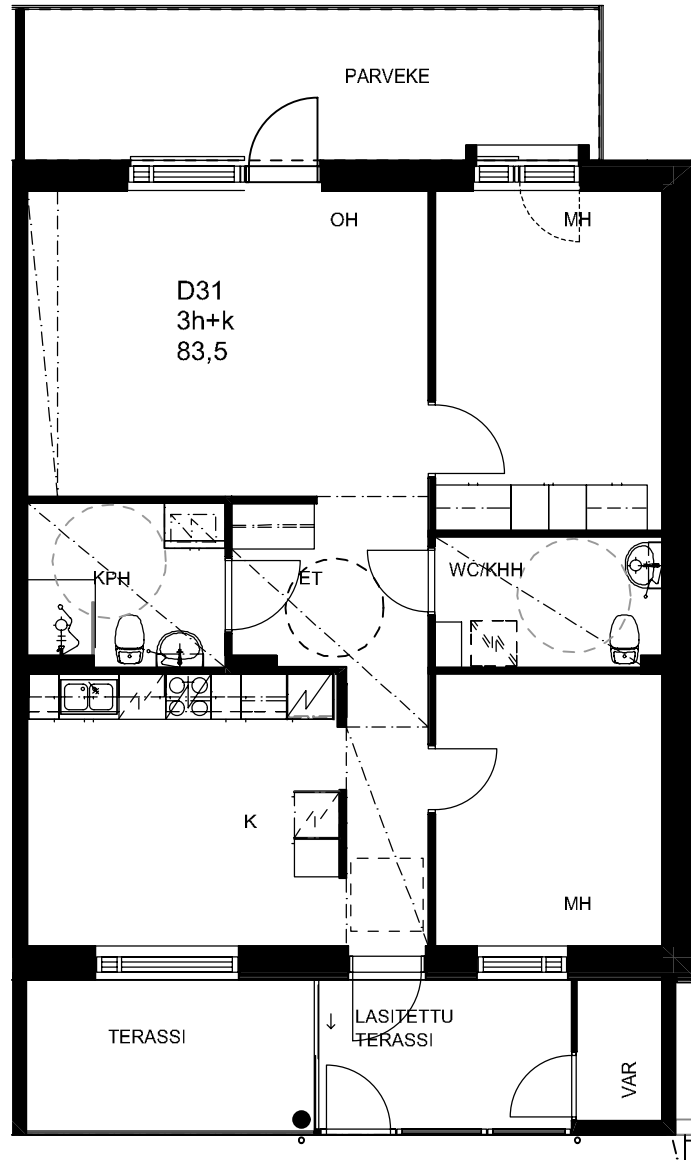
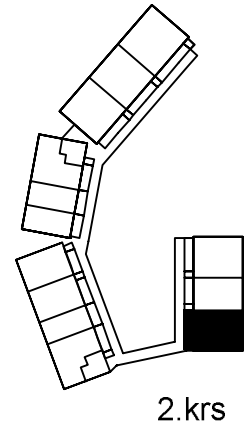
1:100

# HEKA VIIKINMÄKI HARJANNETIE 13

Harjannetie 13  
00710 Helsinki

## ASUNTO D31

3h + K  
83,5 m<sup>2</sup>



Arkkitehtitoimisto Tiuri & Lommi Oy

Laivanvarustajankatu 5 00140 Helsinki  
tel 09-621 40 90 fax 09-621 40 08

27.11.2014



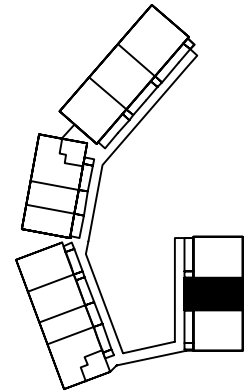
1:100

# HEKA VIIKINMÄKI HARJANNETIE 13

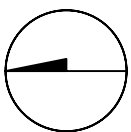
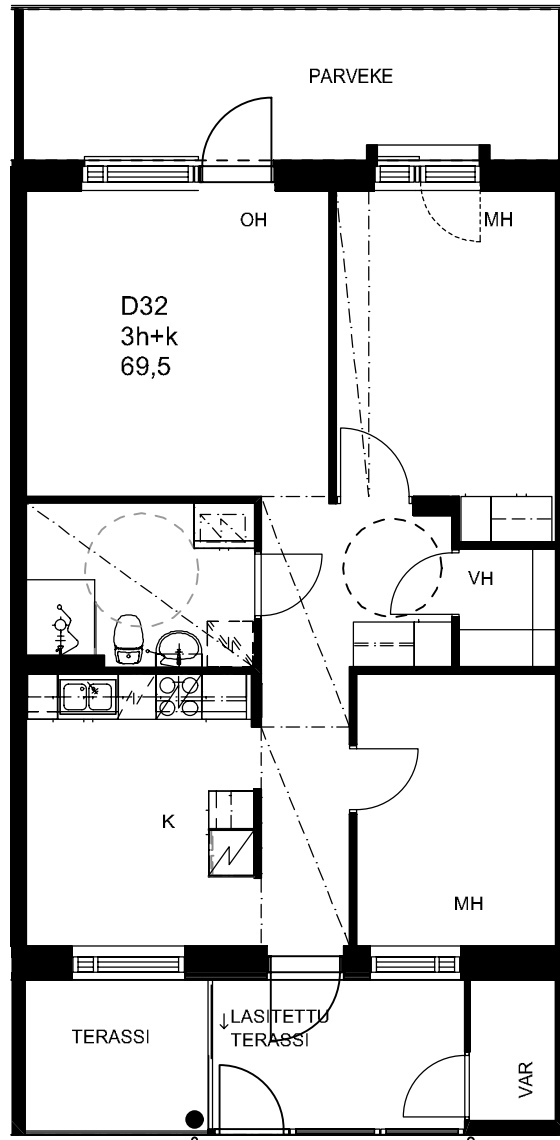
Harjannetie 13  
00710 Helsinki

## ASUNTO D32

3h + K  
69,5 m<sup>2</sup>



2.krs



Arkkitehtitoimisto Tiuri & Lommi Oy

Laivanvarustajankatu 5 00140 Helsinki  
tel 09-621 40 90 fax 09-621 40 08

27.11.2014



1:100

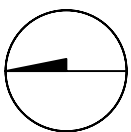
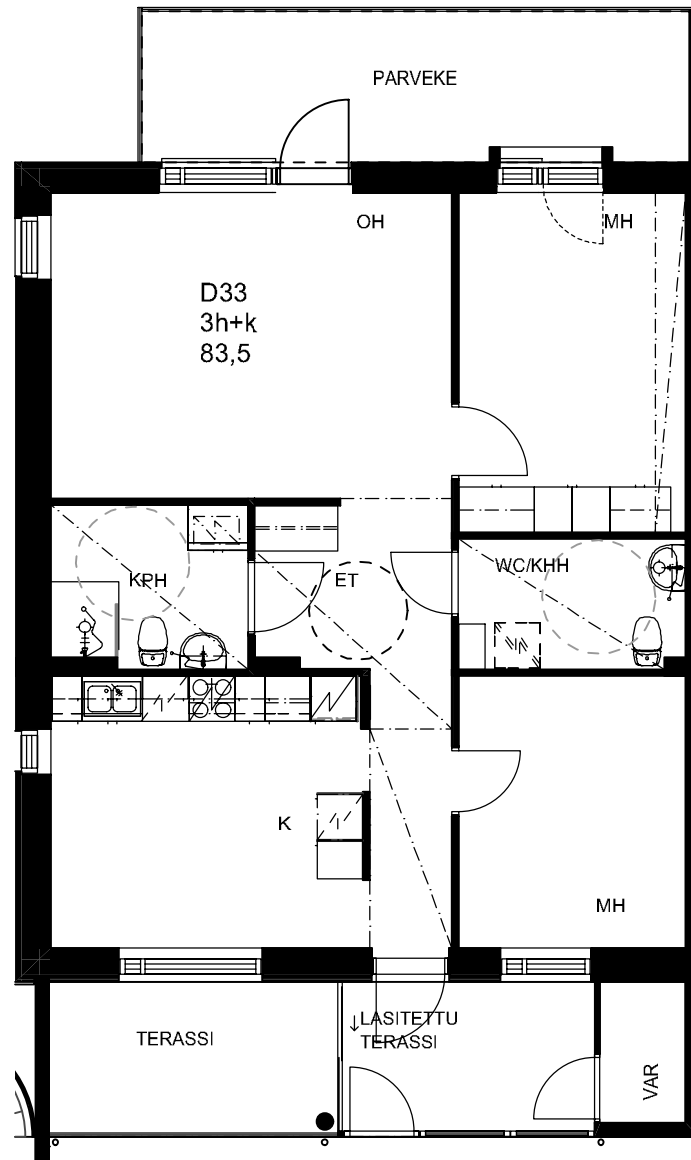
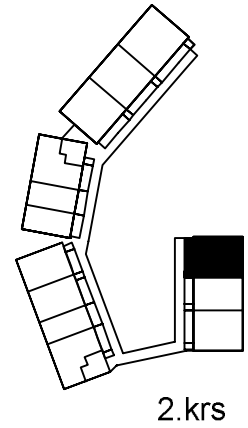


# HEKA VIIKINMÄKI HARJANNETIE 13

Harjannetie 13  
00710 Helsinki

## ASUNTO D33

3h + K  
83,5 m<sup>2</sup>



Arkkitehtitoimisto Tiuri & Lommi Oy

Laivanvarustajankatu 5 00140 Helsinki  
tel 09-621 40 90 fax 09-621 40 08

27.11.2014



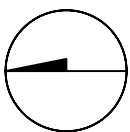
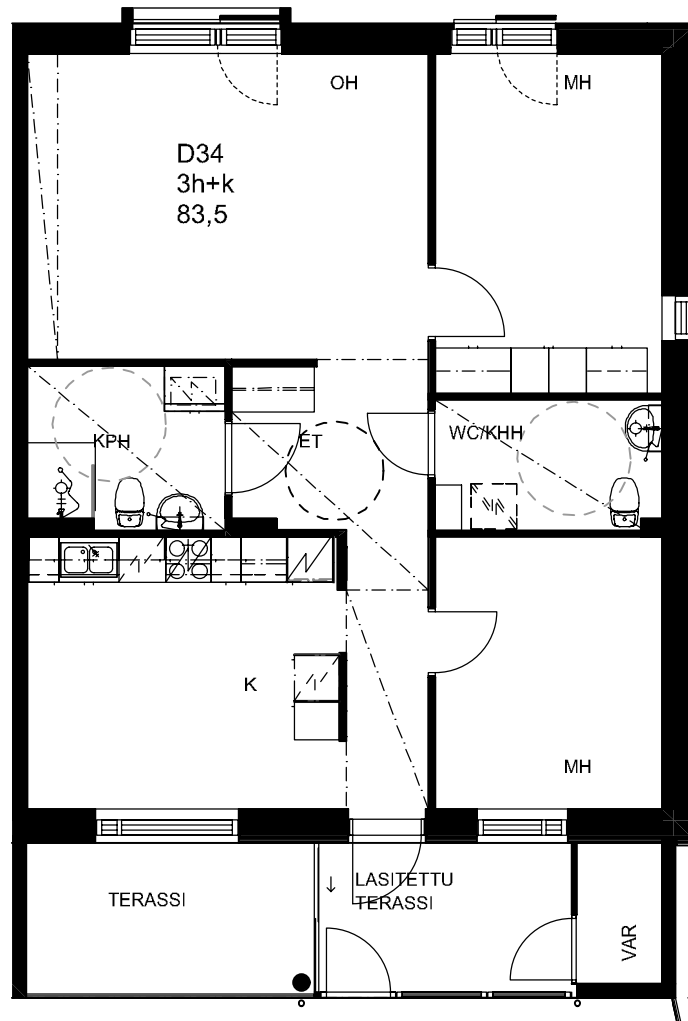
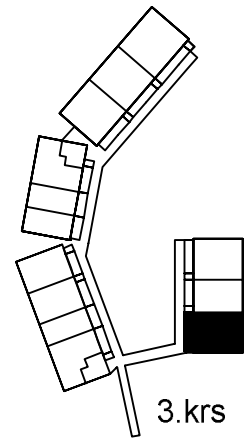
1:100

# HEKA VIIKINMÄKI HARJANNETIE 13

Harjannetie 13  
00710 Helsinki

## ASUNTO D34

3h + K  
83,5 m<sup>2</sup>



Arkkitehtitoimisto Tiuri & Lommi Oy

Laivanvarustajankatu 5 00140 Helsinki  
tel 09-621 40 90 fax 09-621 40 08

27.11.2014



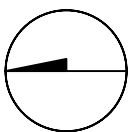
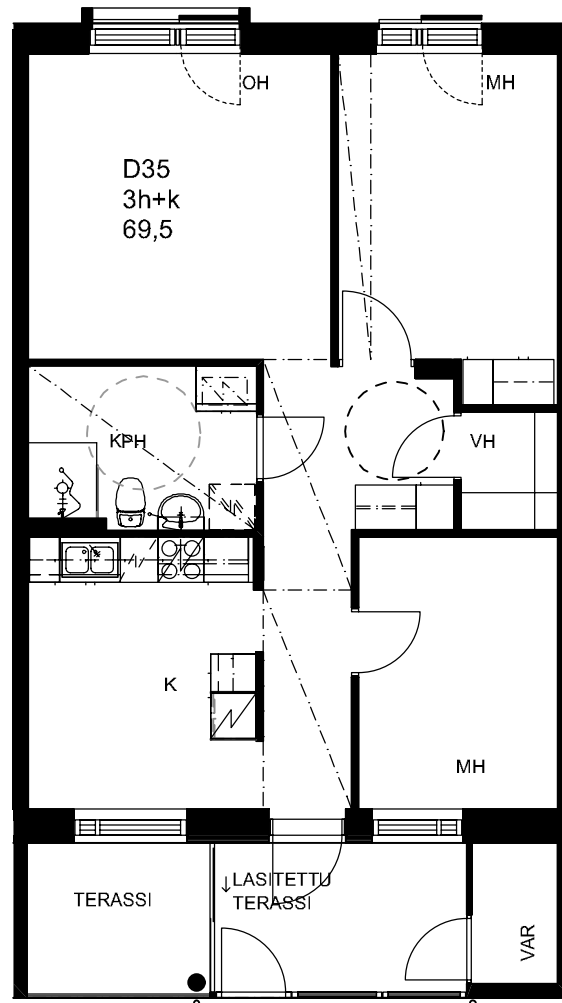
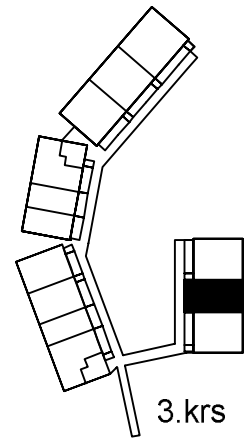
1:100

# HEKA VIIKINMÄKI HARJANNETIE 13

Harjannetie 13  
00710 Helsinki

## ASUNTO D35

3h + K  
69,5 m<sup>2</sup>



Arkkitehtitoimisto Tiuri & Lommi Oy

Laivanvarustajankatu 5 00140 Helsinki  
tel 09-621 40 90 fax 09-621 40 08

27.11.2014



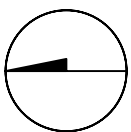
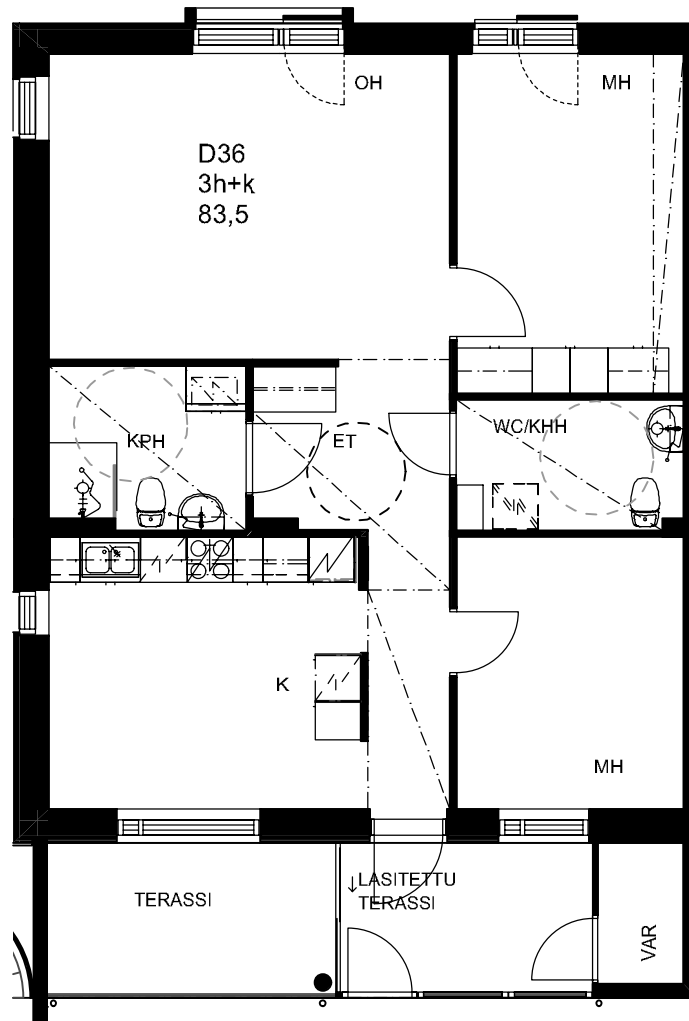
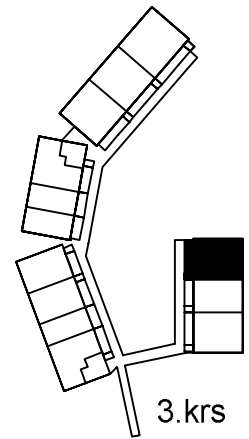
1:100

# HEKA VIIKINMÄKI HARJANNETIE 13

Harjannetie 13  
00710 Helsinki

## ASUNTO D36

3h + K  
83,5 m<sup>2</sup>



Arkkitehtitoimisto Tiuri & Lommi Oy

Laivanvarustajankatu 5 00140 Helsinki  
tel 09-621 40 90 fax 09-621 40 08

27.11.2014



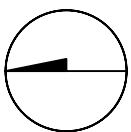
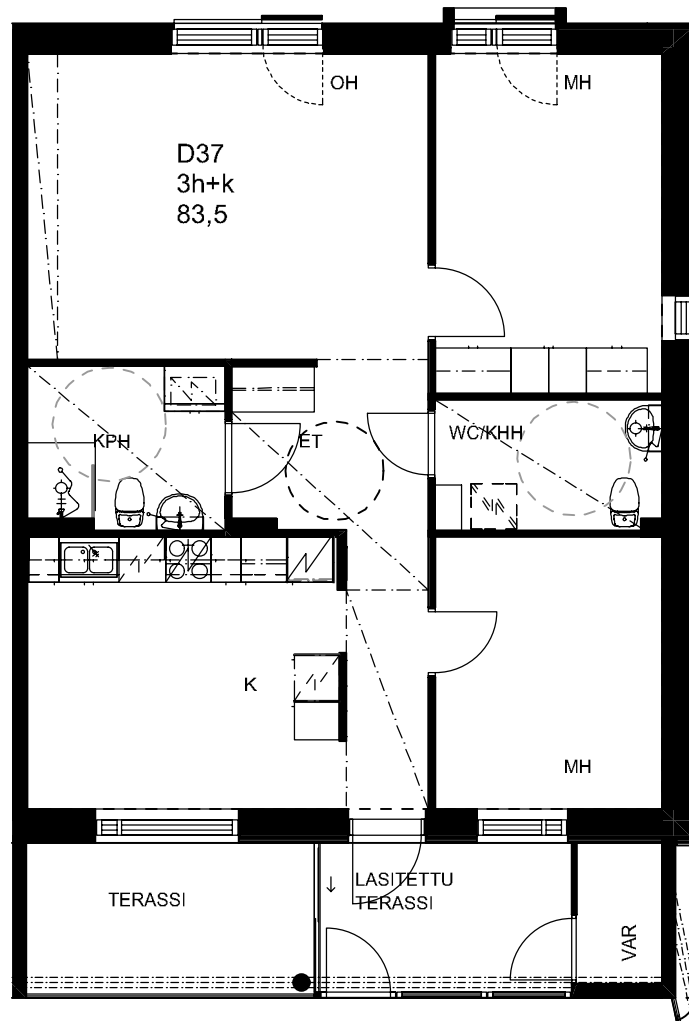
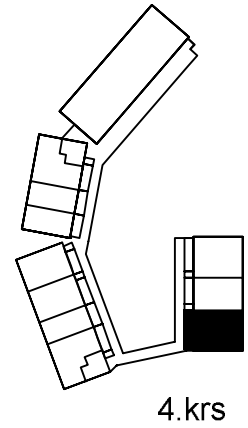
1:100

# HEKA VIIKINMÄKI HARJANNETIE 13

Harjannetie 13  
00710 Helsinki

## ASUNTO D37

3h + K  
83,5 m<sup>2</sup>



Arkkitehtitoimisto Tiuri & Lommi Oy

Laivanvarustajankatu 5 00140 Helsinki  
tel 09-621 40 90 fax 09-621 40 08

27.11.2014



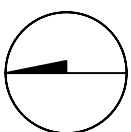
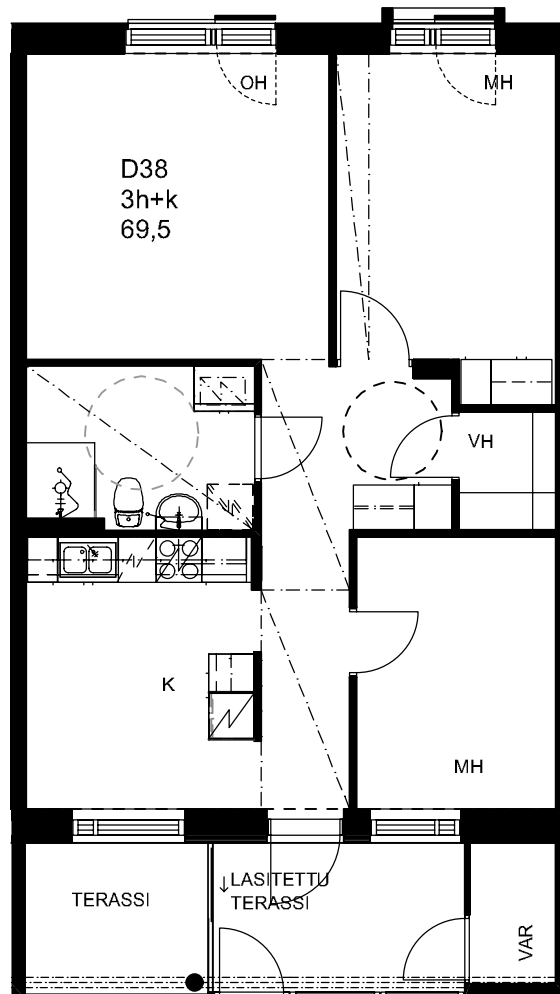
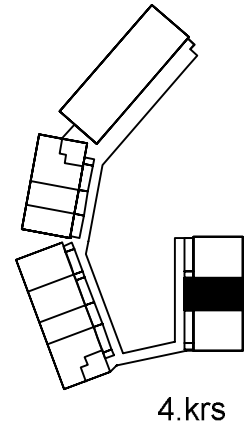
1:100

# HEKA VIIKINMÄKI HARJANNETIE 13

Harjannetie 13  
00710 Helsinki

## ASUNTO D38

3h + K  
69,5 m<sup>2</sup>



Arkkitehtitoimisto Tiuri & Lommi Oy

Laivanvarustajankatu 5 00140 Helsinki  
tel 09-621 40 90 fax 09-621 40 08

27.11.2014



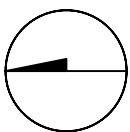
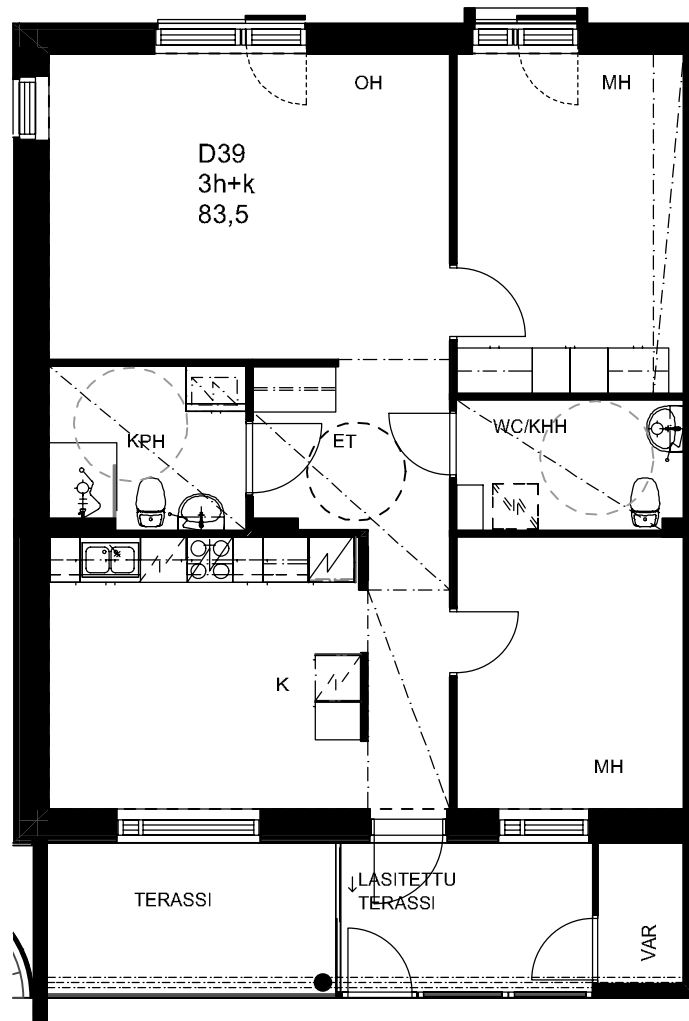
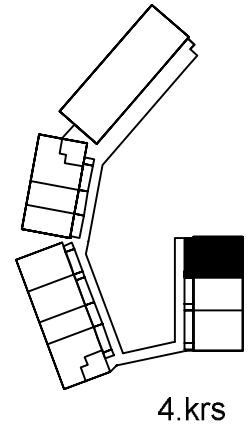
1:100

# HEKA VIIKINMÄKI HARJANNETIE 13

Harjannetie 13  
00710 Helsinki

## ASUNTO D39

3h + K  
83,5 m<sup>2</sup>



Arkkitehtitoimisto Tiuri & Lommi Oy

Laivanvarustajankatu 5 00140 Helsinki  
tel 09-621 40 90 fax 09-621 40 08

27.11.2014



1:100